

If this document is printed in hardcopy,  
it is for information use only and therefore is  
not subject to updating controls. Always  
refer to viewer for latest issue.



THIS DRAWING IS CONFIDENTIAL AND IS SUPPLIED ON THE EXPRESS CONDITION THAT IT SHALL NOT BE LOANED OR COPIED OR DISCLOSED TO ANY OTHER PERSON OR USED FOR ANY OTHER PURPOSE WITHOUT THE WRITTEN CONSENT OF AP RACING LTD.



AP Racing  
Wheler Road  
Coventry  
CV3 4LB

Tel: +44 024 7663 9595  
Fax: +44 024 7663 9559  
e-mail: [sales@apracing.co.uk](mailto:sales@apracing.co.uk)  
Web site: <http://www.apracing.co.uk>

© AP Racing Ltd. 2005

Web site: <http://www.apracing.com>

Issue No.	Alterations		Zone	Initials
	Date & No.	Particulars		
1	05/07/11	FIRST ISSUE	#	JG

SCALE 1:1

SHEET 1 OF 1

DRAWN

Jeremy Govan
--------------

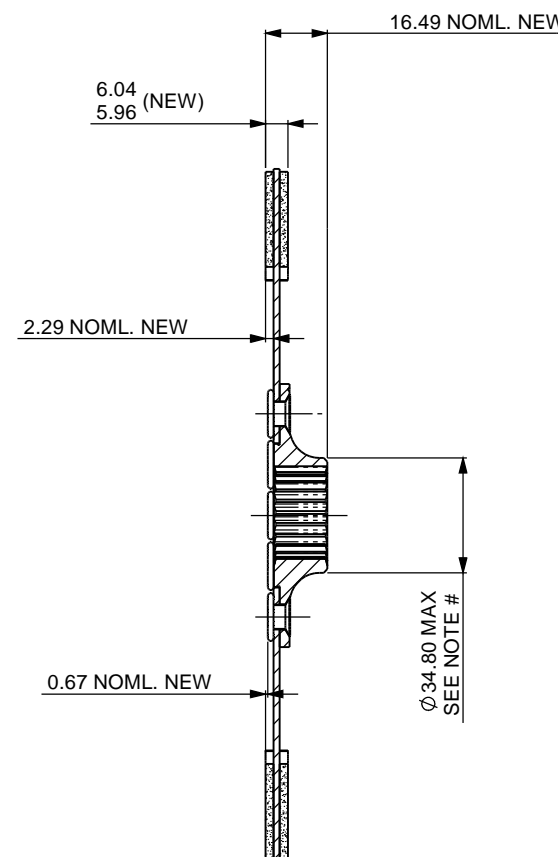
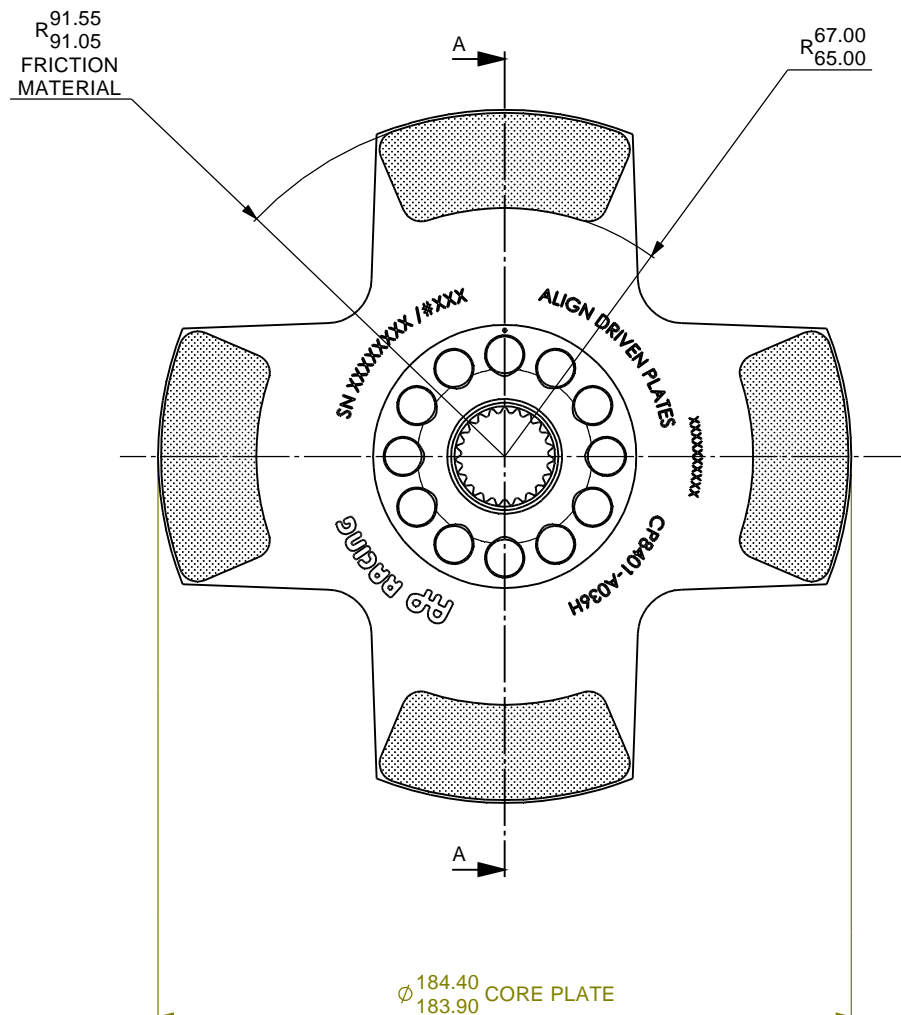
APPROVED

TITLE
-------

Ø7,25" (184mm) DRIVEN  
PLATE FAMILY INSTALLATION

DRG NO.

CP8401CD



SECTION A-A  
SCALE 1 : 1

```
# DIAMETER DEPENDS ON SPLINE SIZE.
```

OTHER HUB LENGTHS AND OFFSETS ARE AVAILABLE.

THIS ASSEMBLY IS INTERCHANGEABLE WITH  
CP8301 FAMILY (3 PADDLE VERSION) AND  
CP8601 FAMILY (6 PADDLE VERSION).