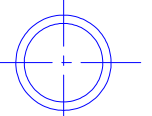
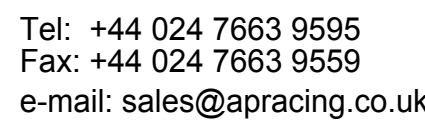


IF THIS DOCUMENT IS PRINTED IN HARDCOPY,
IT IS FOR INFORMATION USE ONLY AND THEREFORE
IS NOT SUBJECT TO UPDATING CONTROLS. ALWAYS
REFER TO SOLIDWORKS VIEWER FOR LATEST ISSUE

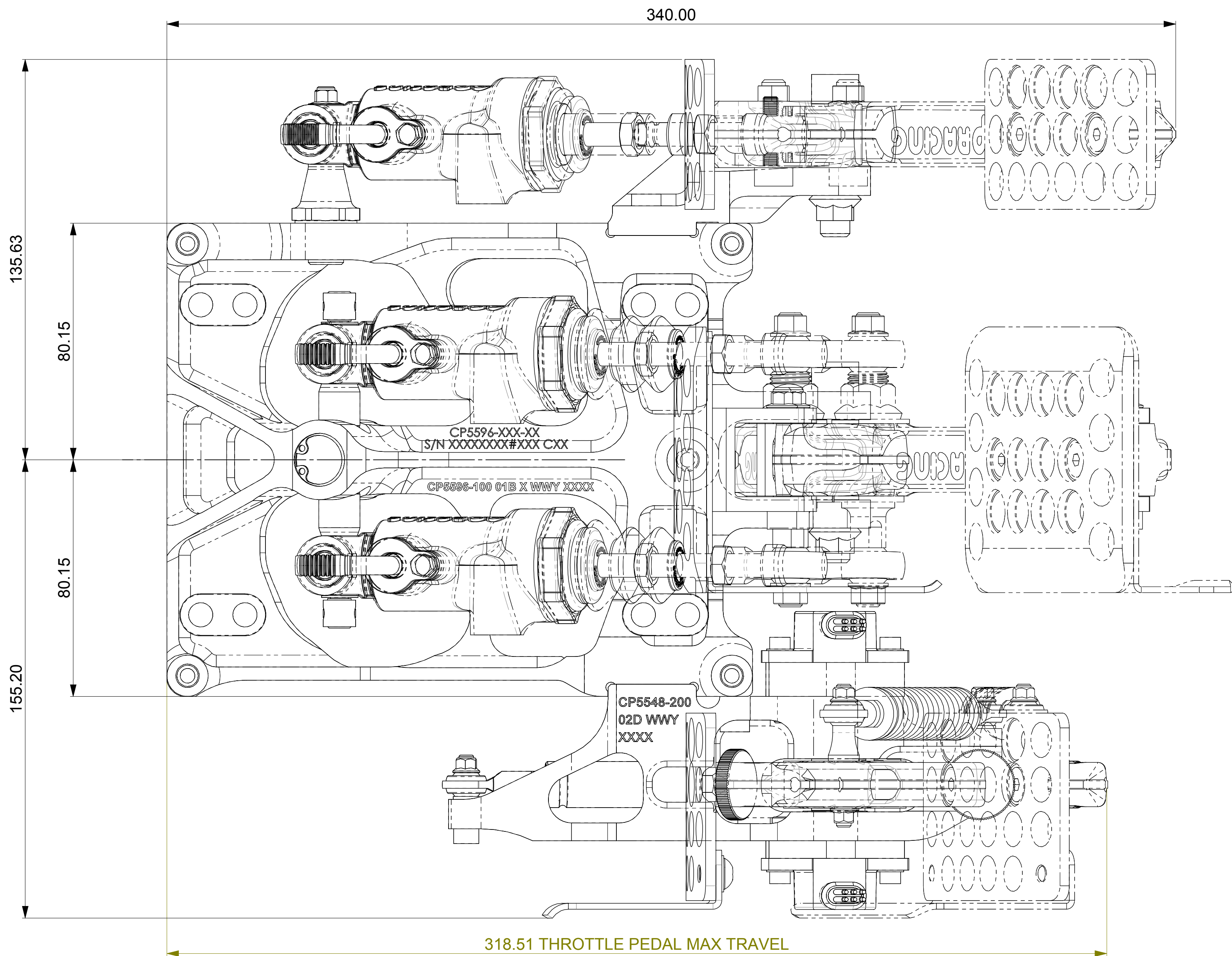


THIS DRAWING IS CONFIDENTIAL AND IS SUPPLIED ON THE EXPRESS CONDITION THAT IT SHALL NOT BE LOANED OR COPIED OR DISCLOSED TO ANY OTHER PERSON OR USED FOR ANY OTHER PURPOSE WITHOUT THE WRITTEN CONSENT OF AP RACING LTD.



© AP Racing Ltd. 2019 Web site: [HTTP://www.apracing.com](http://www.apracing.com)

SCALE 1:1	SHEET 1 OF 7
DRAWN	Sten Wahlstrom
APPROVED	
DERIVED FROM	AD5548-1



THIS UNIQUE PULL TYPE DESIGN ALLOWS THE LOAD THROUGH THE CYLINDERS TO REMAIN STRAIGHT DURING OPERATION WHICH ELIMINATES SIDE LOADS THAT YOU SEE IN A PUSH TYPE CYLINDER.

THE CYLINDERS ARE MOUNTED UNDER THE DRIVERS FEET FOR OPTIMUM SPACE UTILISATION AND ACCESS.

MINIMUM HYSTERESIS AND BALANCE VARIATION ARE ASSURED BY THE USE OF NEEDLE ROLLER BEARINGS IN THE CENTRE TRUNNION.

FEATURES

- LIGHTWEIGHT ALUMINIUM BASE, MACHINED FROM SOLID.
- ALL PEDALS ARE MACHINED FROM ALUMINIUM FORGINGS.
- PEDALS ARE PIVOTED BY BALL BEARINGS TO INCREASE SMOOTHNESS.
- DESIGNED FOR USE WITH CP6465, CP6461 OR CP6467 (ABS BRAKE APPLICATIONS) MASTER CYLINDERS.
- ADJUSTABLE FOOT PADS FOR EXTRA DRIVER COMFORT.
- ADJUSTABLE CLUTCH & THROTTLE PEDAL STOPS.
- BRAKE PEDAL RATIO ADJUSTABLE 4.10:1 TO 5.00:1
- CLUTCH PEDAL RATIO 4.55:1
- DUAL MOUNTINGS FOR THROTTLE POTENTIOMETERS. INBOARD MOUNTING AND SENSOR AVAILABLE IN SEPARATE KIT.
- WEIGHT 3.9kg APPROX WITHOUT CYLINDERS.

PART NUMBERS

CP5596-CBT	CLUTCH, BRAKE & THROTTLE PEDAL BOX ASSEMBLY, NO THROTTLE SENSORS
CP5596-CBT-TS	CLUTCH, BRAKE & THROTTLE PEDAL BOX ASSEMBLY, WITH OUTBOARD THROTTLE SENSOR
CP5596-BT	BRAKE & THROTTLE PEDAL BOX ASSEMBLY, NO THROTTLE SENSORS
CP5596-BT-TS	BRAKE & THROTTLE PEDAL BOX ASSEMBLY, WITH OUTBOARD THROTTLE SENSOR
CP5596-CB	CLUTCH & BRAKE PEDAL BOX ASSEMBLY
CP5596-B	BRAKE ONLY PEDAL BOX ASSEMBLY
CP5596-TS	INBOARD THROTTLE SENSOR KIT

SCALE 1:1

SHEET 1 OF 7

DRAWN	Sten Wahlstrom
-------	----------------

APPROVED

DERIVED FROM	AD5548-1
--------------	----------

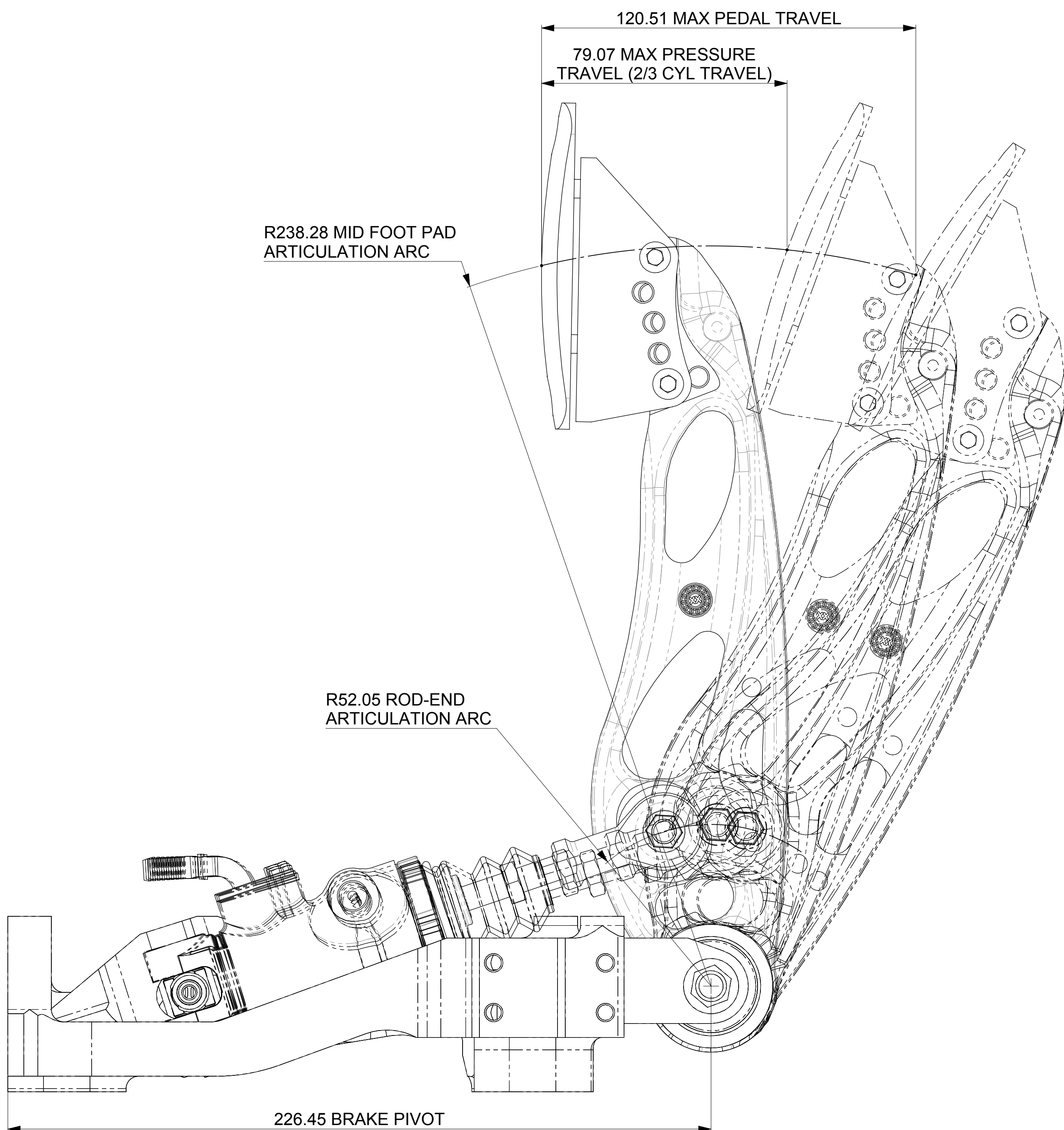
TITLE

FLOOR MTG PULL TYPE
PEDAL BOX

DRG NO.	CP5596-1CD
---------	------------

SCALE 1:1	SHEET 2 OF 7
DRAWN	Sten Wahlstrom
APPROVED	
DERIVED FROM	
TITLE	
CABLE ADJUSTERS	
DRG NO.	CP5596-1CD

THE DAMPER HAS AN ADJUSTABLE RATE OF 20-800N, IT IS ADJUSTED BY POSITIONING IT IN THE MOST EXTENDED OR COMPRESSED POSITION AND TWISTING THE ROD. THE DAMPER IS SET TO MEDIUM DAMPING AS SUPPLIED.



BRAKE PEDAL RATIO ADJUSTMENT BOBBINS.

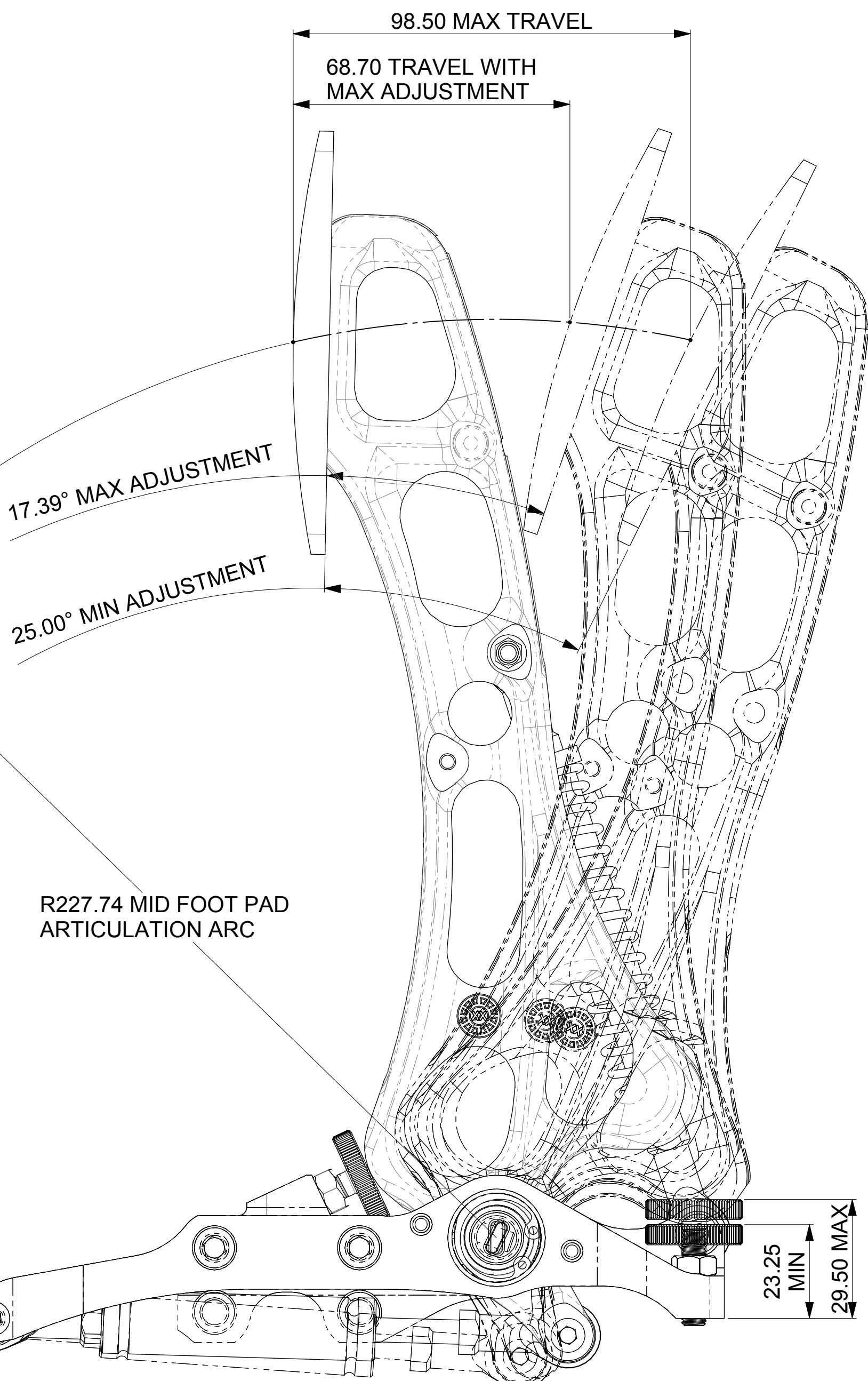
CP5576-105 - NOMINAL - 4.55:1

CP5576-106 - OFFSET - 5.00:1 OR 4.10:1

PEDAL BOX IS SUPPLIED WITH 1-OFF
CP5576-105. OFFSET ADJUSTMENT
BOBBIN CP5576-106 CAN BE BOUGHT
SEPARATELY.



1000 OFFSET
GP5576-106



Technical drawing of a brake assembly, identified as CP360-100 01B X WVV XXXX. The drawing shows a symmetrical component with various mounting points and a central pivot. Key dimensions and features are labeled:

- Dimensions:**
 - Overall width: 191.45
 - Overall height: 176.45
 - Top section height: 50.00
 - Side section height: 15.00
 - Bottom section height: 150.00
 - Bottom section height (right): 17.45
 - Bottom section height (left): 7.00
 - Central width: 52.50
 - Outer width: 73.15
- Components:**
 - BRAKE PIVOT:** Indicated by a hatched area at the top center.
 - CP360-100 01B X WVV XXXX:** The main part number of the assembly.

OP1					
ITEN No.	PART No.	DESCRIPTION	QTY	TORQUE	LOCTITE
1	CP5596-100	BASEPLATE	1	-	-
2	CP5548-124	BALL BEARING	1	-	-

OP2					
ITEN No.	PART No.	DESCRIPTION	QTY	TORQUE	LOCTITE
1	CP5548-123	NEEDLE BEARING	1	-	-

OP3					
ITEN No.	PART No.	DESCRIPTION	QTY	TORQUE	LOCTITE
1	CP5548-123	NEEDLE BEARING	1	-	-
2	CP5548-126	BARREL NUT	1	-	-
3	CP3555-199	BOLT M4x10x0.7 CAP	1	3.5Nm	243

SQUARE BOX AROUND ITEM No. INDICATES THAT LOCTITE IS USED

OP4					
ITEN No.	PART No.	DESCRIPTION	QTY	TORQUE	LOCTITE
1	CP5500-113ST	GRUB SCREW M4x5	4	-	-
2	CP5517-160	BALANCE BAR BACKUP SPACER	2	-	-
3	CP5517-123	CIRCLIP	2	-	-
4	CP5517-124	BALANCE BAR SPACER	2	-	-
5	CP5517-161	SNAPRING	2	-	-
6	CP5716-105	BALANCE BAR	1	-	-
7	CP5520-201	TRUNNION END PLATE	1	-	-
8	CP2232-39	INTERNAL CIRCLIP 18	1	-	-
9	CP3449-114	M6 HELI-COIL 1D	5	-	-

Issue No.		Date & No.		Alterations		Zone	Initials
				Particulars			
-		-		SEE SHEET 1 FOR ISSUE INFORMATION.		-	-

SCALE 3:2

SHEET 4 OF 7

DRAWN

Sten Wahlstrom

APPROVED

DERIVED FROM

AD5548-1

TITLE

FLOOR MTG PULL TYPE
PEDAL BOX

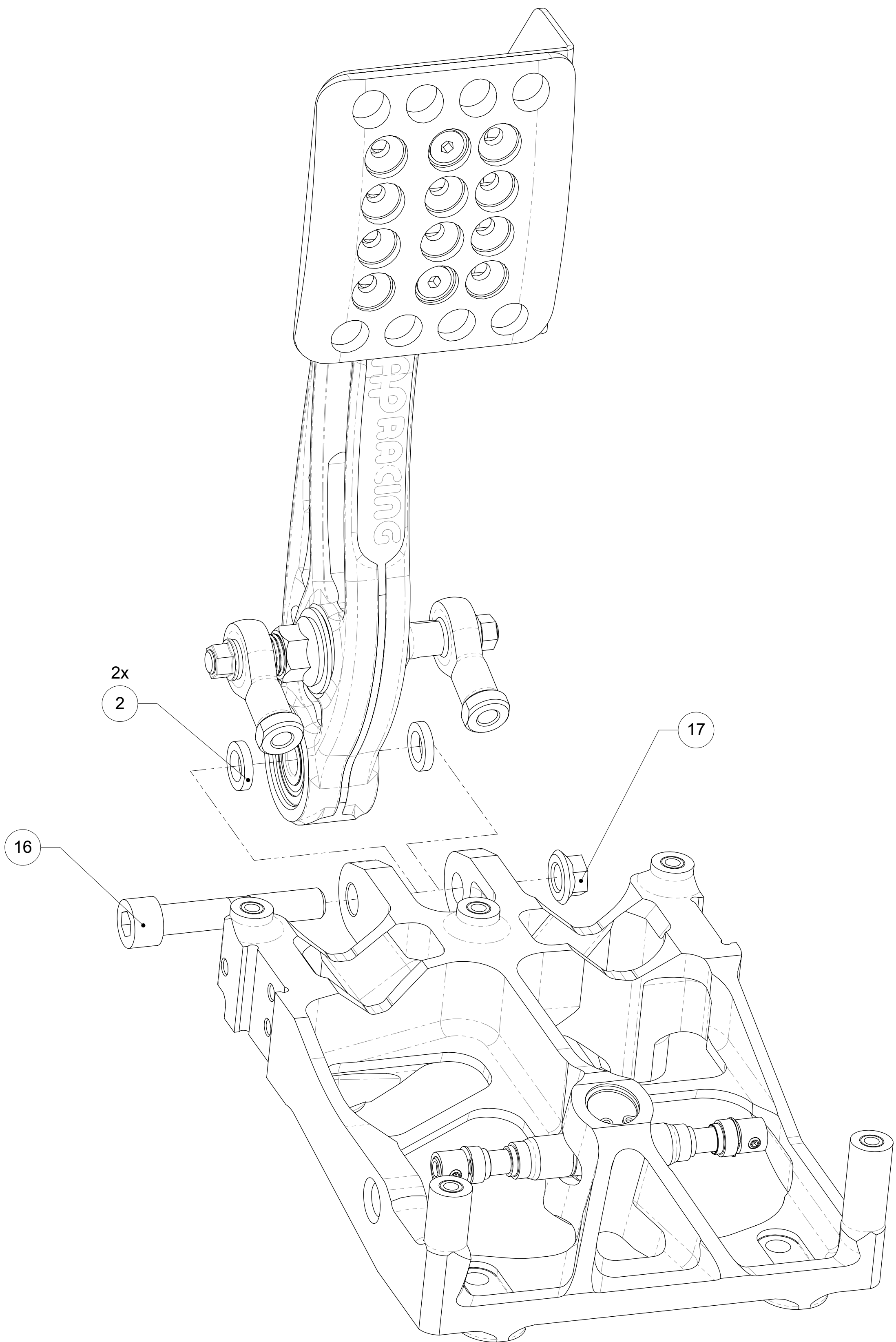
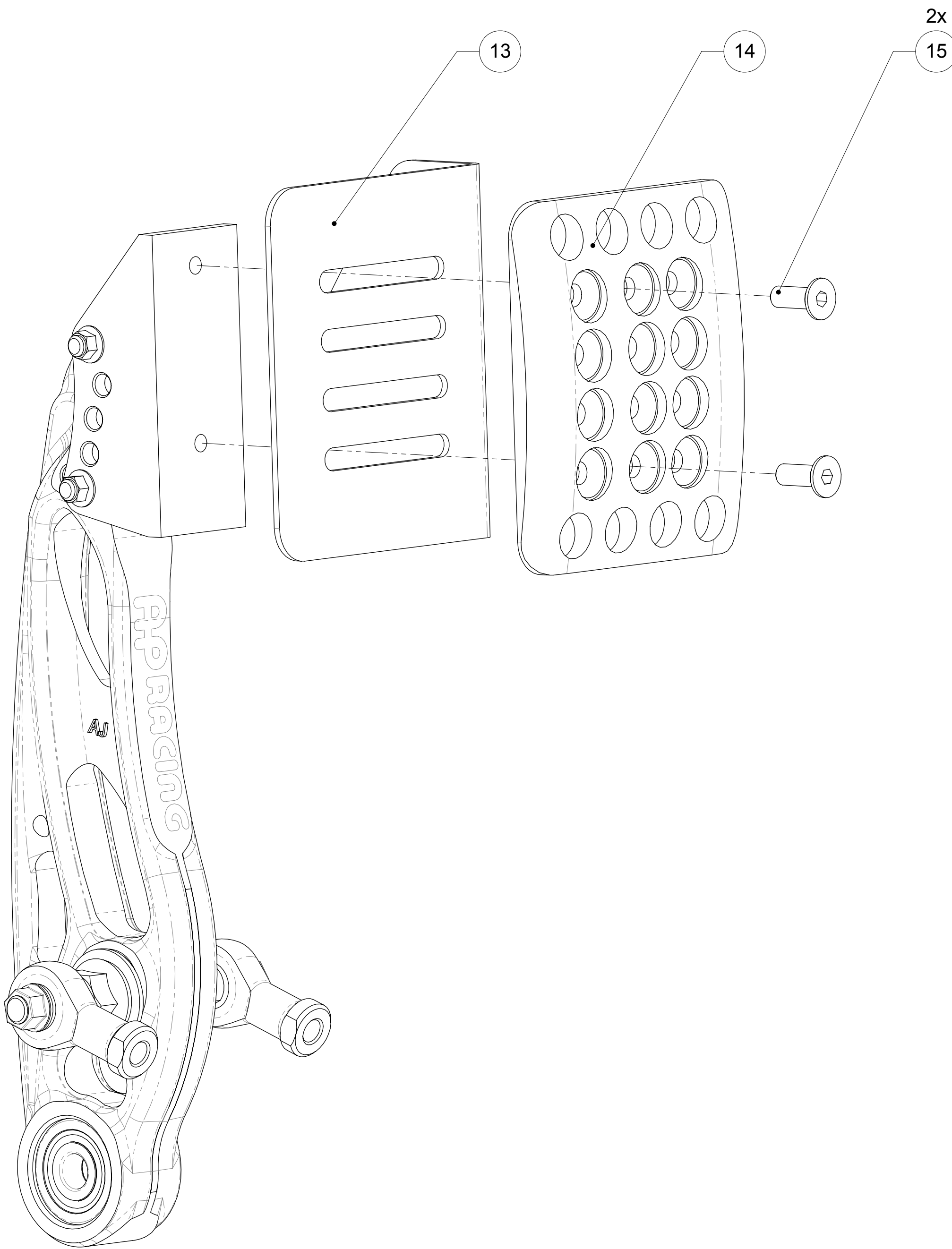
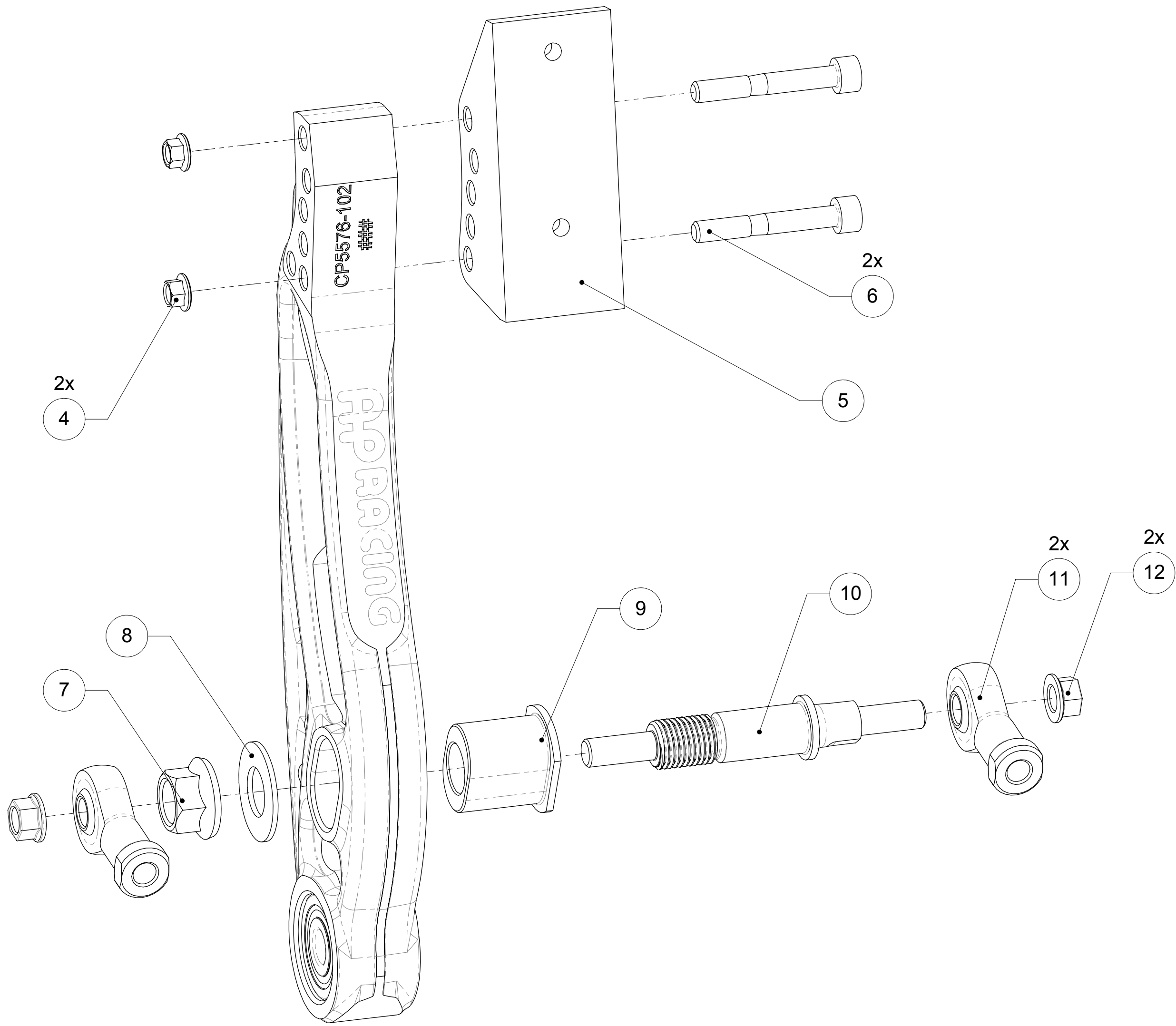
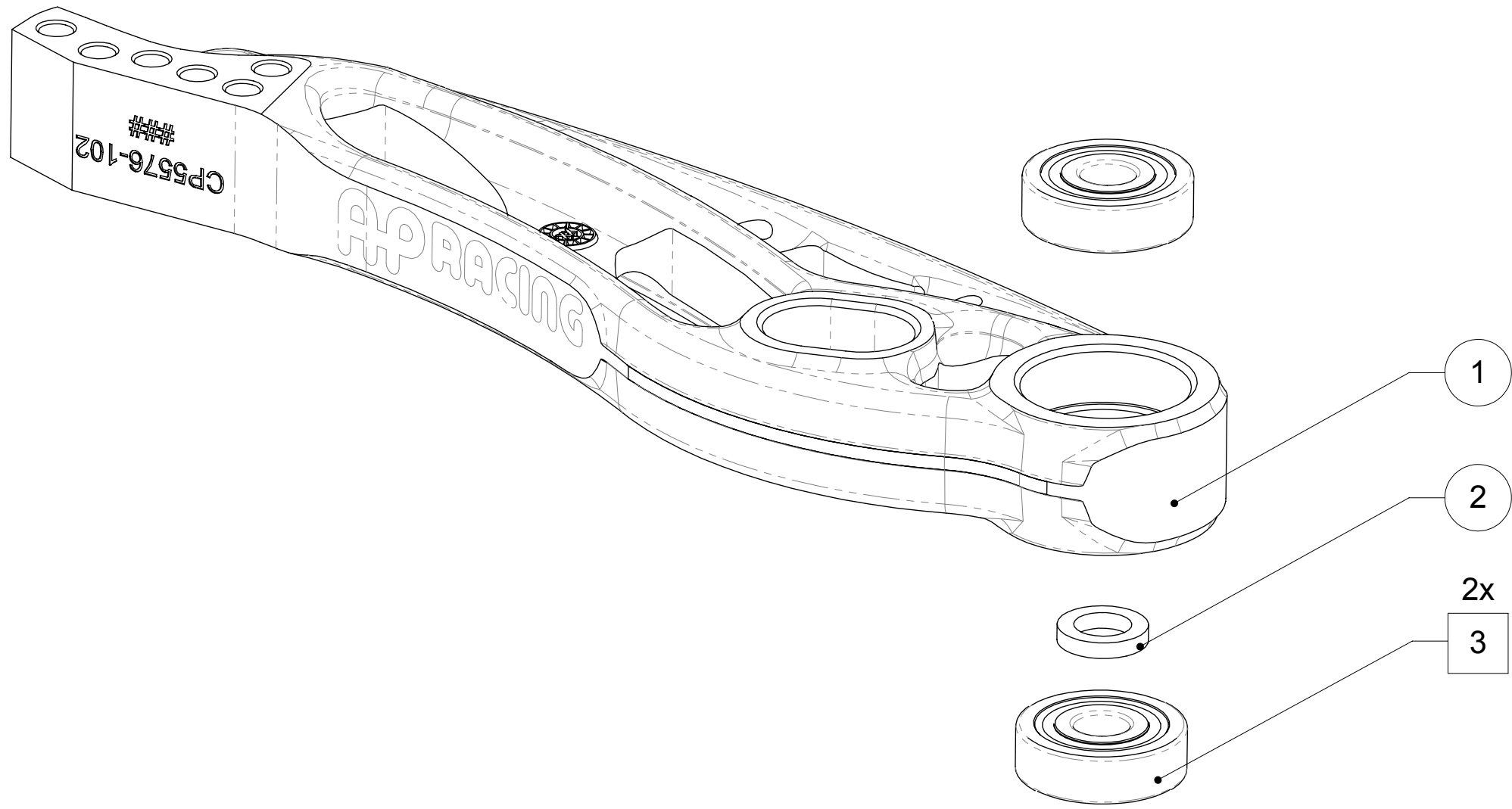
DRG NO.

CP5596-1CD

BRAKE PEDAL

BRAKE PEDAL					
ITEN No.	PART No.	DESCRIPTION	QTY	TORQUE	LOCTITE
1	CP5576-102	BRAKE PEDAL	1	-	-
2	CP5518-127	SPACER 16x10.2x3	3	-	-
3	CP5516-106	BRG BALL-30x10x9.0	2	-	648
4	CP3423-107	NUT M6x1.00 KAYLOCK	2	-	-
5	CP5516-137	BRAKE FOOTPAD ADJUSTER	1	-	-
6	CP4370-114	SCREW-M6x42 CAP	2	10Nm	-
7	CP5576-107	NUT M14x1.5 KAYLOCK	1	50Nm	-
8	CP3307-258	WASHER 28x14.2x1.5	1	-	-
9	CP5576-105	PULLBAR BOBBIN	1	-	-
10	CP5576-104	PULLBAR FLANGED	1	-	-
11	CP5506-106	ROD END M8x1.25	2	-	-
12	CP4611-111	NUT M8x1.25 KAYLOCK	2	25Nm	-
13	CP5538-210	BRAKE GUARD PLATE	1	-	-
14	CP5500-330	BRAKE PEDAL FOOTPAD	1	-	-
15	CP4350-106	SCREW M6x14 CSK	2	10Nm	-
16	CP5200-108	BOLT M10x58x1.5 CAP	1	40Nm	-
17	CP5427-101	NUT M10x1.5 KAYLOCK	1	-	-

SQUARE BOX AROUND ITEM No. INDICATES
THAT LOCTITE IS USED



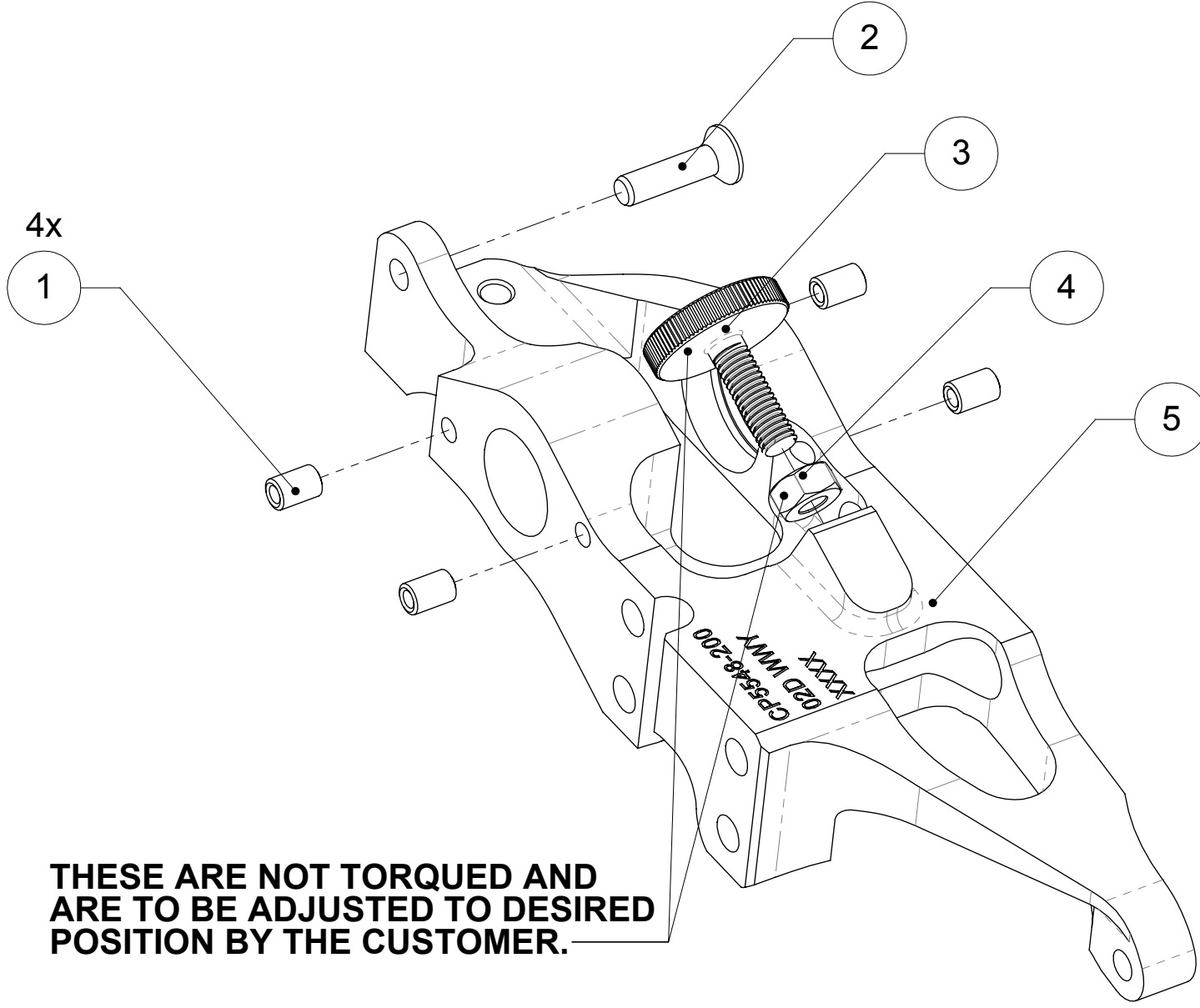
Alterations			
Issue No.	Date & No.	Particulars	Zone
-	-	SEE SHEET 1 FOR ISSUE INFORMATION.	-

SCALE 1:1		SHEET 5 OF 7
DRAWN	Sten Wahlstrom	
APPROVED		
DERIVED FROM	AD5548-1	
TITLE		
FLOOR MTG PULL TYPE		
PEDAL BOX		
DRG NO.	CP5596-1CD	

THROTTLE

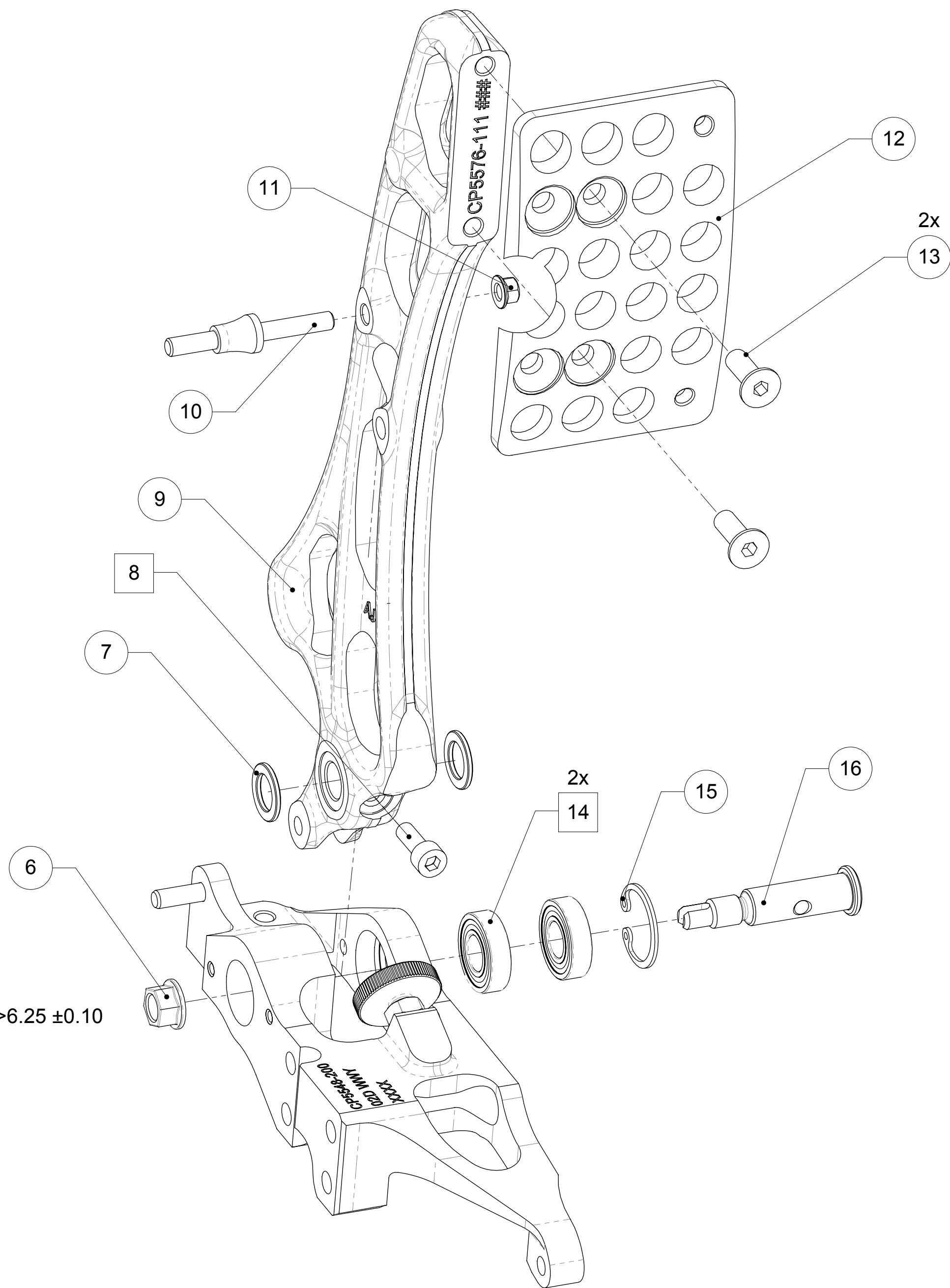
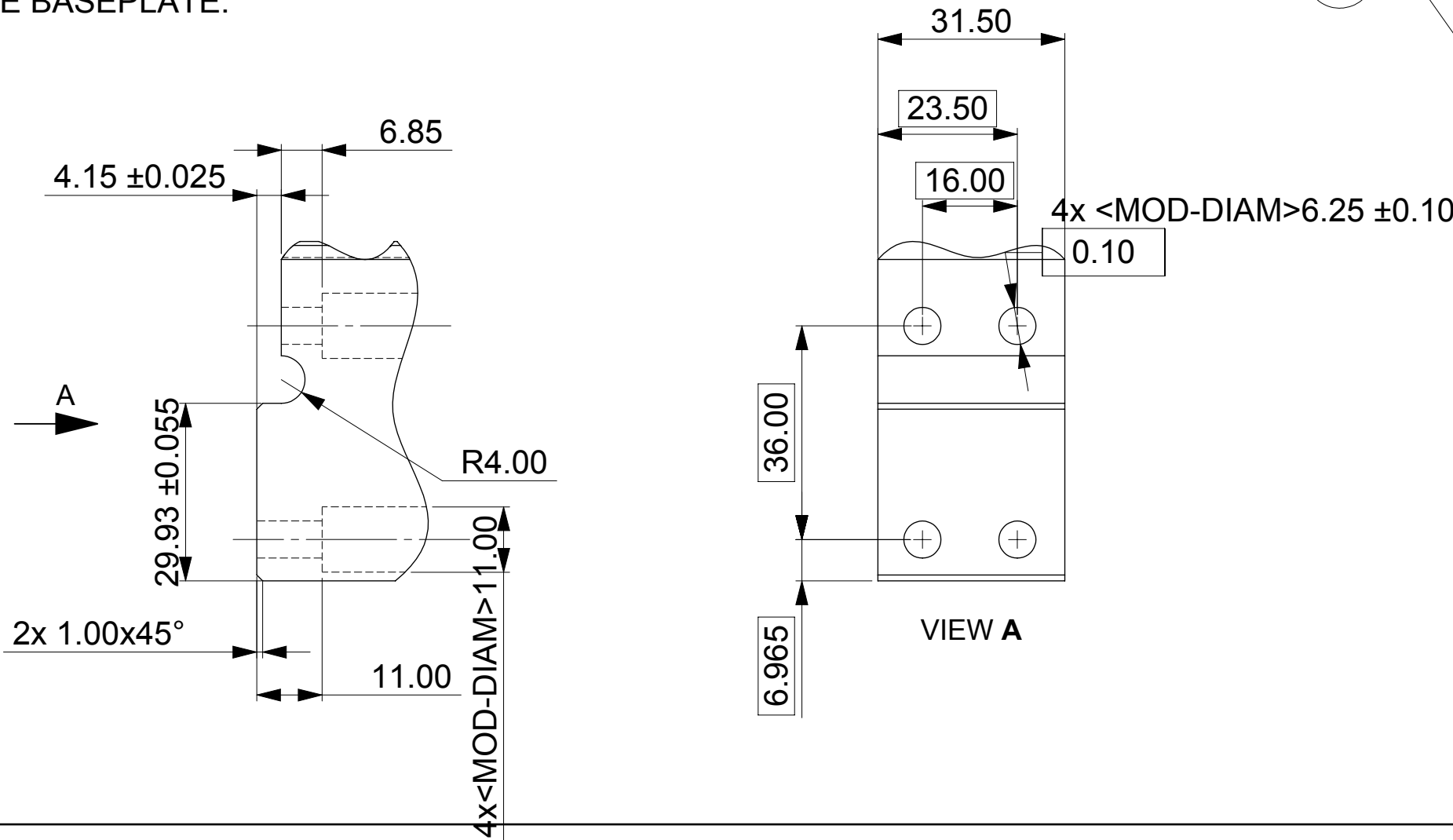
THROTTLE					
ITEM No.	PART No.	DESCRIPTION	QTY	TORQUE	LOCTITE
1	CP2494-3037	HELICOIL-M4x0.70x2.0DLK	4	-	-
2	CP2494-3078	SCREW-M5x20 CSK	1	6.8Nm	-
3	CP5548-204	KNURLED SCREW M6x1.00	2	SEE NOTE	-
4	ME21001	NUT M06x1.00	2	SEE NOTE	-
5	CP5548-200	THROTTLE PEDAL BRACKET	1	-	-
6	CP4611-111	NUT M8x1.25 KAYLOCK	1	25Nm	-
7	CP5538-208	SPACER RING	2	-	-
8	CP5516-208	BOLT -M5x14x0.8 CAP	1	6.8Nm	243
9	CP5576-111	THROTTLE PEDAL	1	-	-
10	CP5548-206	SPRING MECHANISM ATTACHMENT	1	-	-
11	CP5576-126	NUT M5x0.80 KAYLOCK	5	6.8Nm	-
12	CP5516-167	THOTTLE PEDAL FOOTPAD	1	-	-
13	CP4350-106	SCREW-M6x14 CSK	2	10Nm	-
14	CP5516-140	BRG BALL-22.0x10.0x06.0	2	-	648
15	CP5516-162	CIRCLIP INT 23.10	1	-	-
16	CP5548-202	THROTTLE PIVOT SHAFT	1	-	-
17	CP5548-208	ROD END M5x0.8	4	-	243
18	CP9100-132	BOLT-M5x10x0.80 CAP	1	2Nm	243
19	CP5548-211	SPRING STRUT BODY	1	-	-
20	CP5548-212	SPRING STRUT ROD	1	-	-
21	CP5576-117	COMPRESSION SPRING	1	-	-
22	CP5548-207	HYDRAULIC DAMPER	1	-	-
23	CP5896-144	WASHER-9.0x5.3x1.0	2	-	-
24	CP5500-119	BOLTMCM-M05x025 CAP	2	6.8Nm	-
25	CP4360-116	SCREW-M6x20 CAP	4	10Nm	243
26	CP2494-1305	WASHER-12.5x06.5x0.80	2	-	-
27	CP5516-164	THOTTLE GUARD PLATE	1	-	-
28	CP2749-194	SCREW-M6x8 BUT	2	8Nm	243
29	CP5548-203	THROTTLE SENSOR PLATE	1	-	-
30	CP5548-209	THROTTLE POSITION SENSOR	1	-	-
31	CP7000-170	WASHER-9.0x4.2x0.8	2	-	-
32	CP3833-182	SCREW-M4x16 CAP	2	3.5Nm	-

SQUARE BOX AROUND ITEM No. INDICATES
THAT LOCTITE IS USED

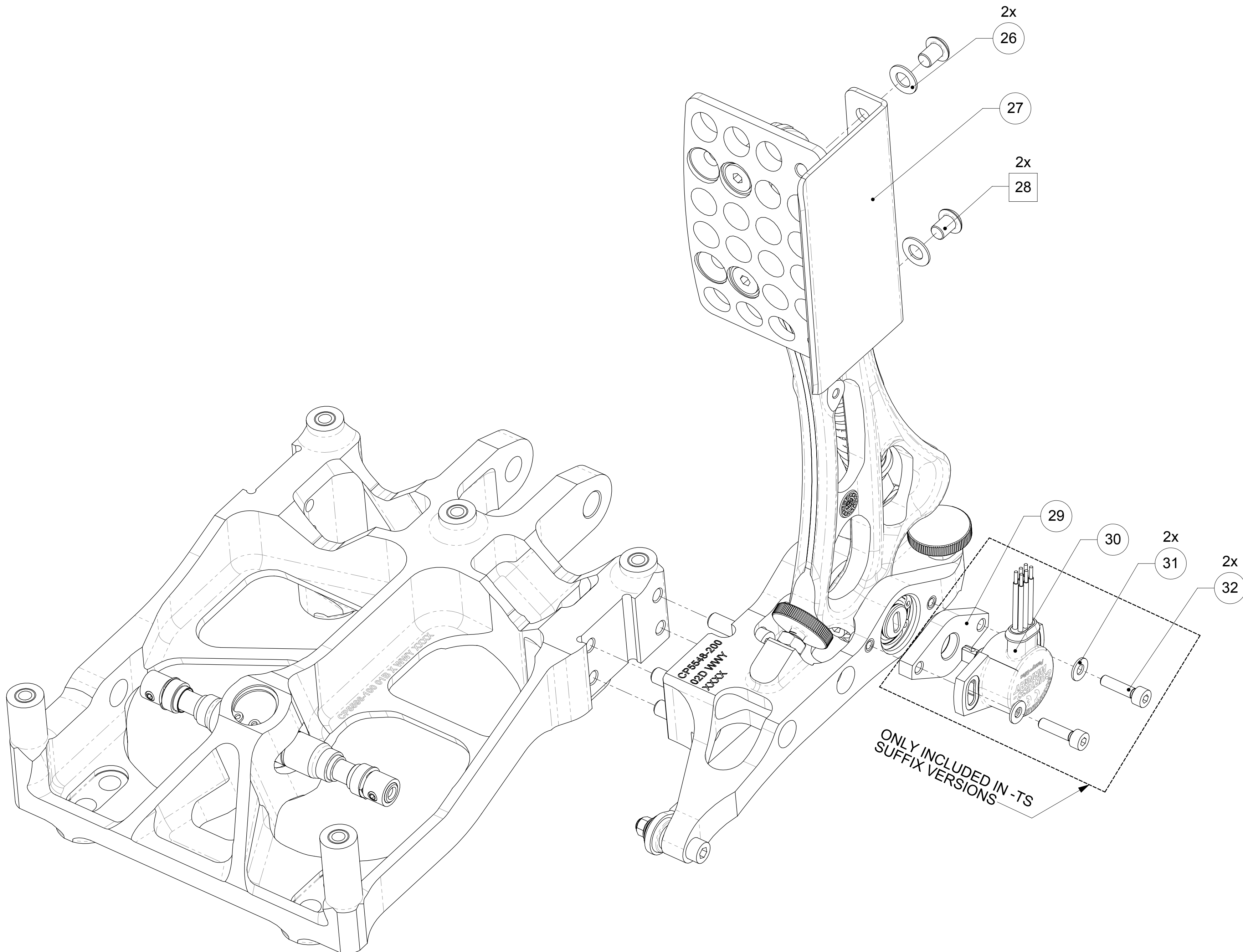
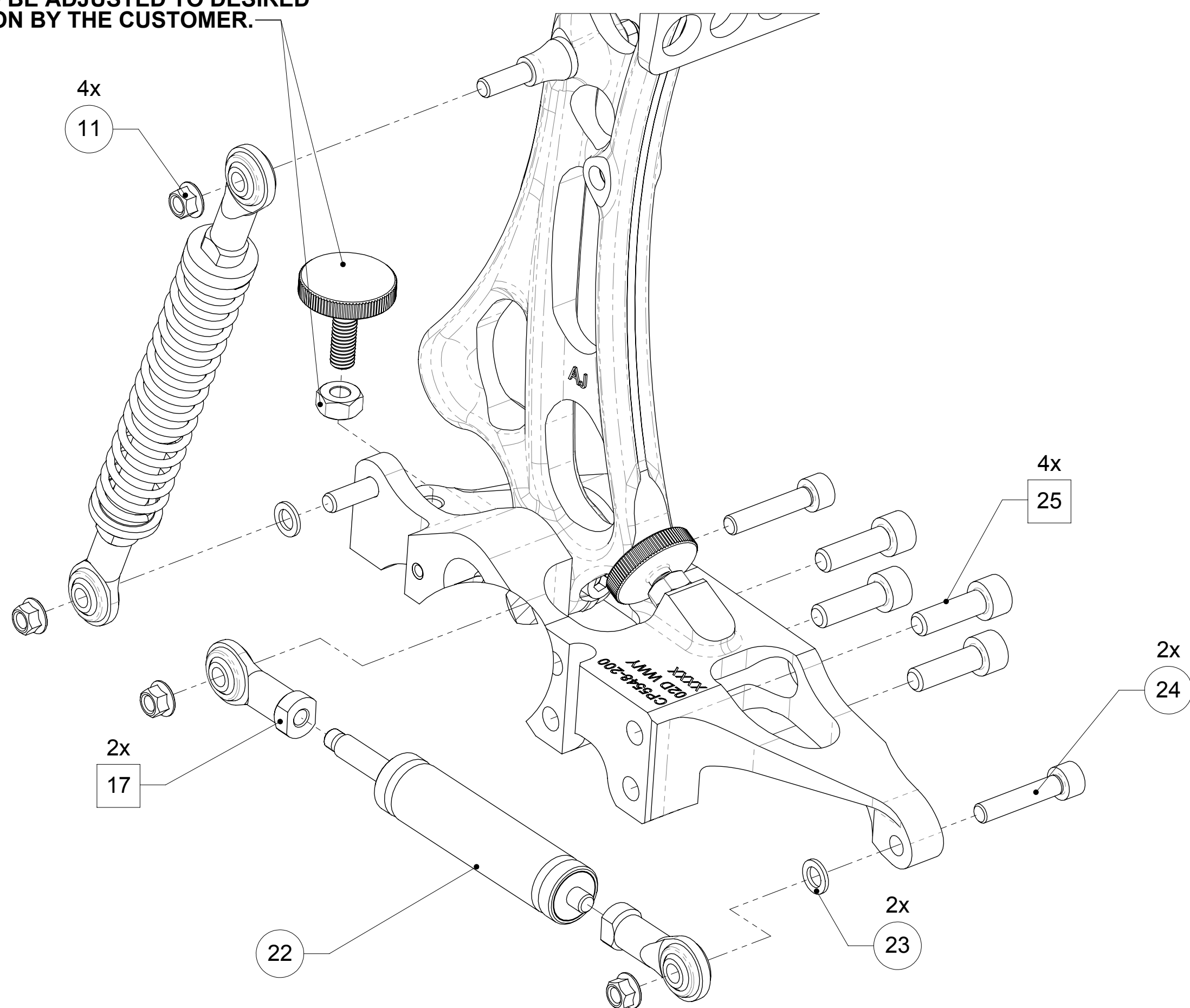
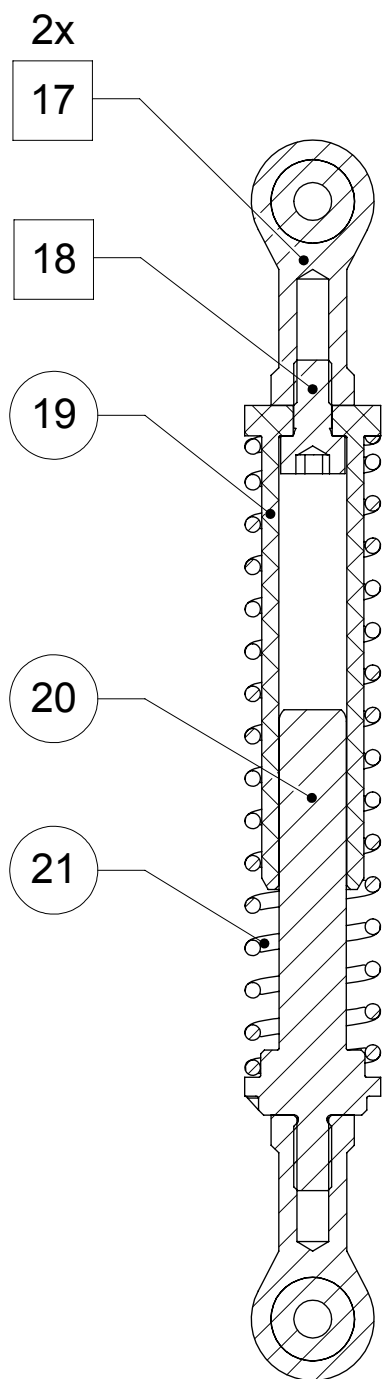


THROTTLE BRACKET DIMENSIONS

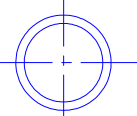
SUGGESTED INTERFACE DIMENSIONS FOR MOUNTING THROTTLE MODULE TO
THE BASEPLATE.



THESE ARE NOT TORQUED AND
ARE TO BE ADJUSTED TO DESIRED
POSITION BY THE CUSTOMER.



IF THIS DOCUMENT IS PRINTED IN HARDCOPY,
IT IS FOR INFORMATION USE ONLY AND THEREFORE
IS NOT SUBJECT TO UPDATING CONTROLS. ALWAYS
REFER TO SOLIDWORKS VIEWER FOR LATEST ISSUE



FIRST ANGLE PROJECTION

THIS DRAWING IS CONFIDENTIAL AND IS SUPPLIED ON THE EXPRESS CONDITION THAT IT SHALL NOT BE LOANED OR COPIED OR DISCLOSED TO ANY OTHER PERSON OR USED FOR ANY OTHER PURPOSE WITHOUT THE WRITTEN CONSENT OF AP RACING LTD.

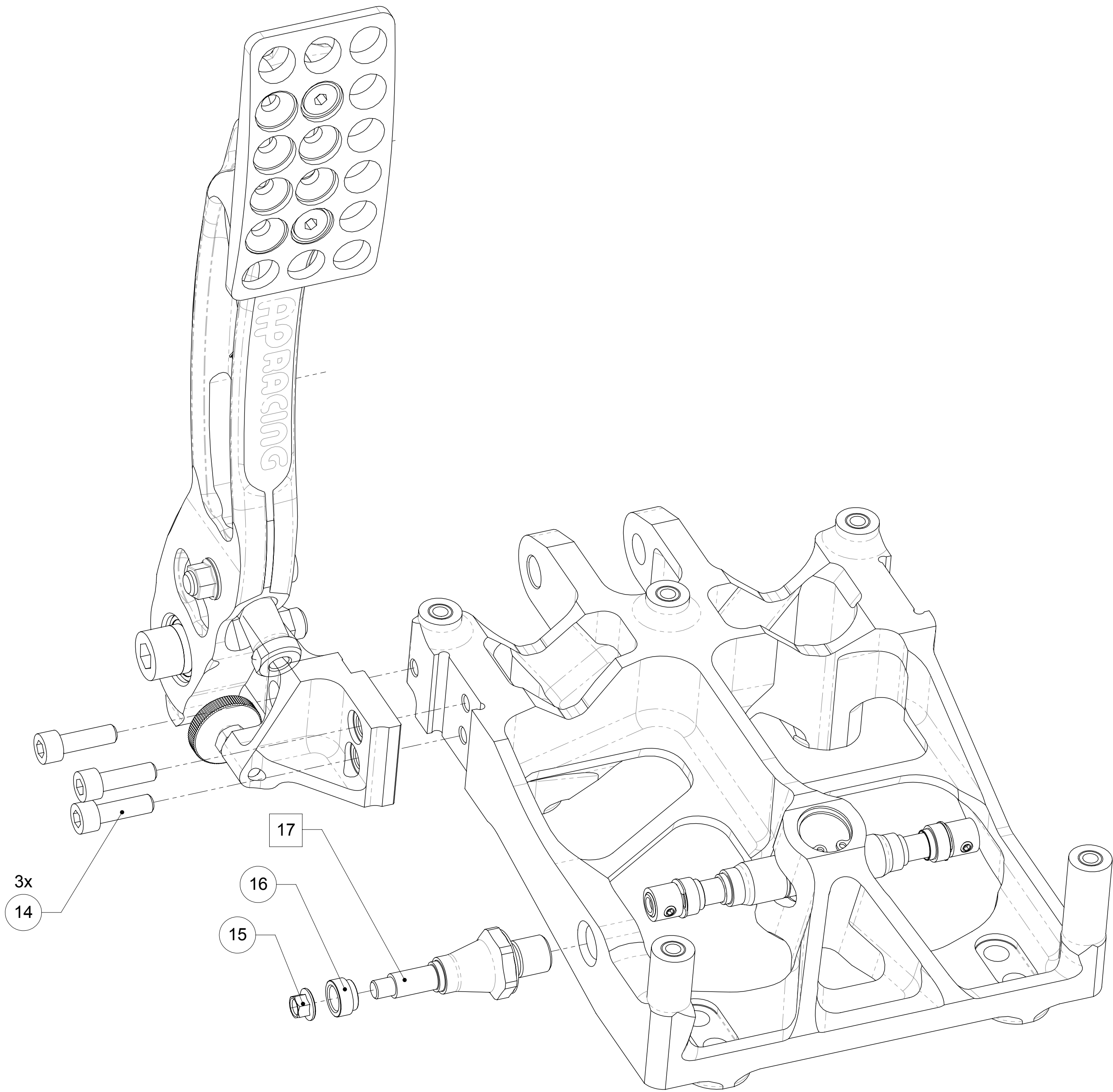
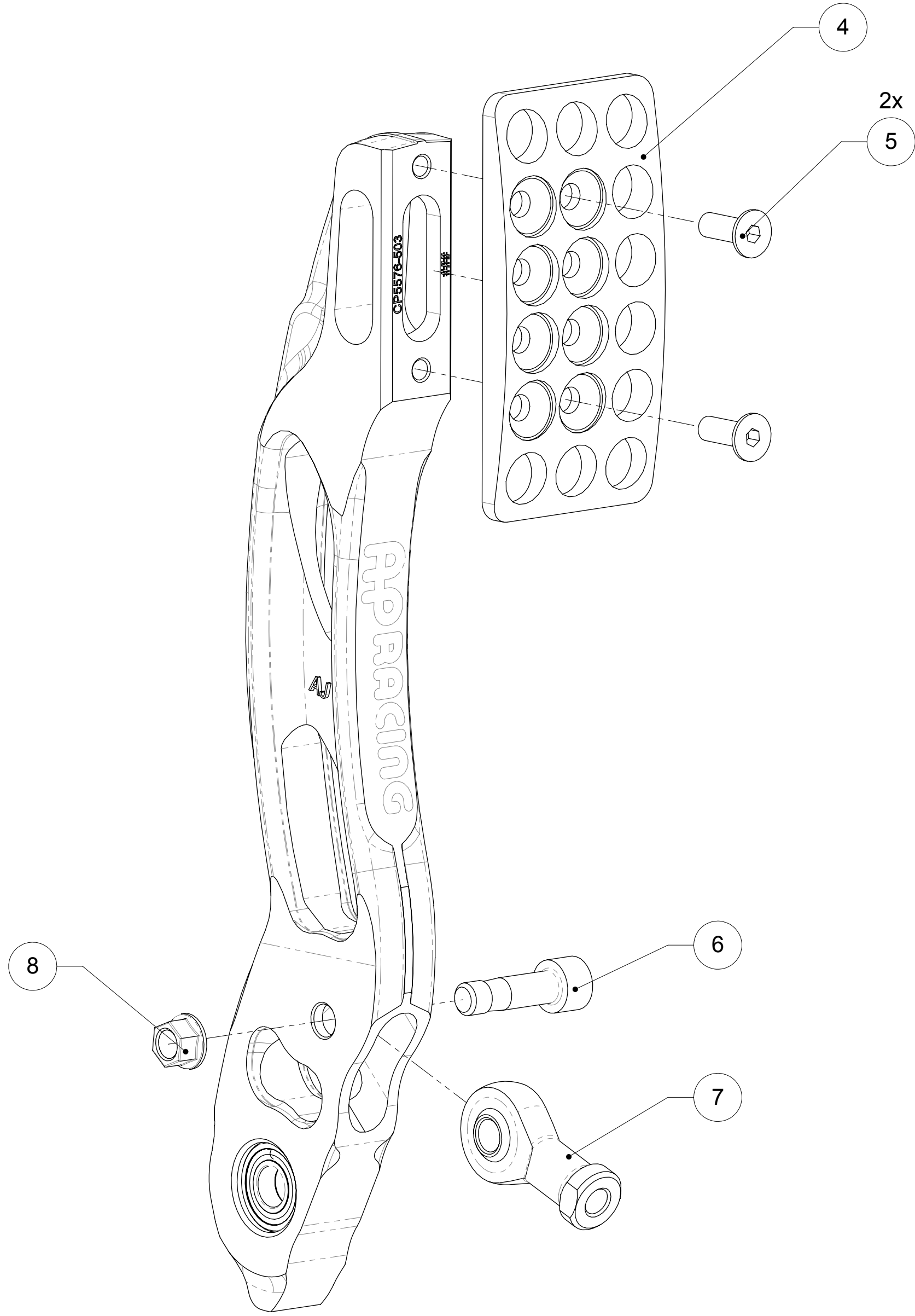


Tel: +44 024 7663 9595
Fax: +44 024 7663 9559
e-mail: sales@apracing.co.uk
Web site: [HTTP://www.apracing.co.uk](http://www.apracing.co.uk)

© AP Racing Ltd. 2019

Web site: [HTTP://www.apracing.com](http://www.apracing.com)

SQUARE BOX AROUND ITEM No. INDICATES
THAT LOCTITE IS USED



SCALE 1:1	SHEET 7 OF 7
DRAWN	Sten Wahlstrom
APPROVED	
DERIVED FROM	AD5548-1
TITLE FLOOR MTG PULL TYPE PEDAL BOX	
DWG NO.	CP5596-1CD