

INFO-TECH
Peugeot Sport
208 R2
17-10
Subject: Fire extinguisher nozzles mount

In accordance with the FIA's requirements, extinguisher's nozzles mounting must respond to the manufacturer's preconisation. Therefore, spraying nozzles must be strongly maintained by a mount insuring the jet's wished direction in all circumstances. Consequently, every nozzles of the system must be mounted on a rigid bracket by the way of metal collars or screws and nuts.

You will find in the charts below the references of the extinguisher's nozzles mounts responding to these requirements and available at Racing Shop.

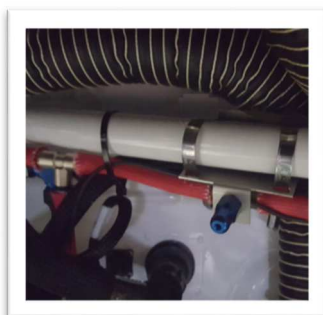
The needed quantities depend on the layout (roll cage) of your vehicle and the model of extinguisher system your car is equipped with; please refer to your extinguisher's manual.

Do not affect the vehicles equipped with an extinguisher complying with the FIA standard 8865-2015.

Designation	Reference	Retail Price excl. VAT
Nozzle mounting Flat angle bracket	904467318B	4.51€
Aluminium rivet 4x12	PS92582A10	0.03€

Flat angle bracket


Designation	Reference	Retail price excl. VAT
Nozzle Roll cage bracket	904467308B	7.10€
Inox strap	904459498A	0.58€


Roll cage bracket


*We remain at your disposal for any further more information.
The technical support staff.*

Peugeot Citroën Racing Shop
racingshop@mpsa.com

Telephone : +33 1 30 11 27 00

Customer's competition technical support
technicalsupport@mpsa.com

Telephone : +33 1 30 11 26 77