

A0

INSTALLATION
DRAWING

IF THIS DOCUMENT IS PRINTED IN HARDCOPY, IT IS FOR INFORMATION USE ONLY AND THEREFORE IS NOT SUBJECT TO UPDATING CONTROLS. ALWAYS REFER TO SOLIDWORKS VIEWER FOR LATEST ISSUE



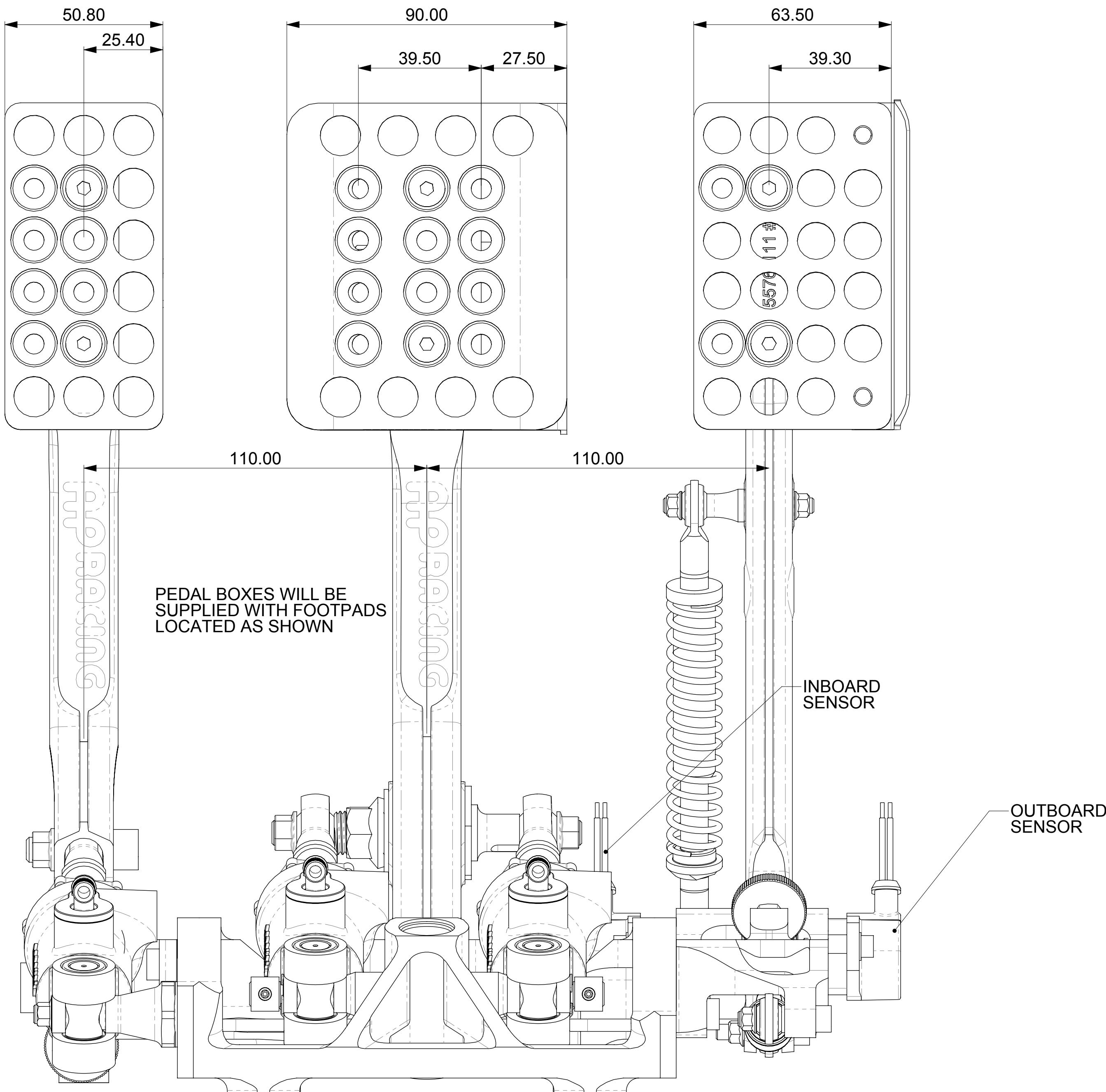
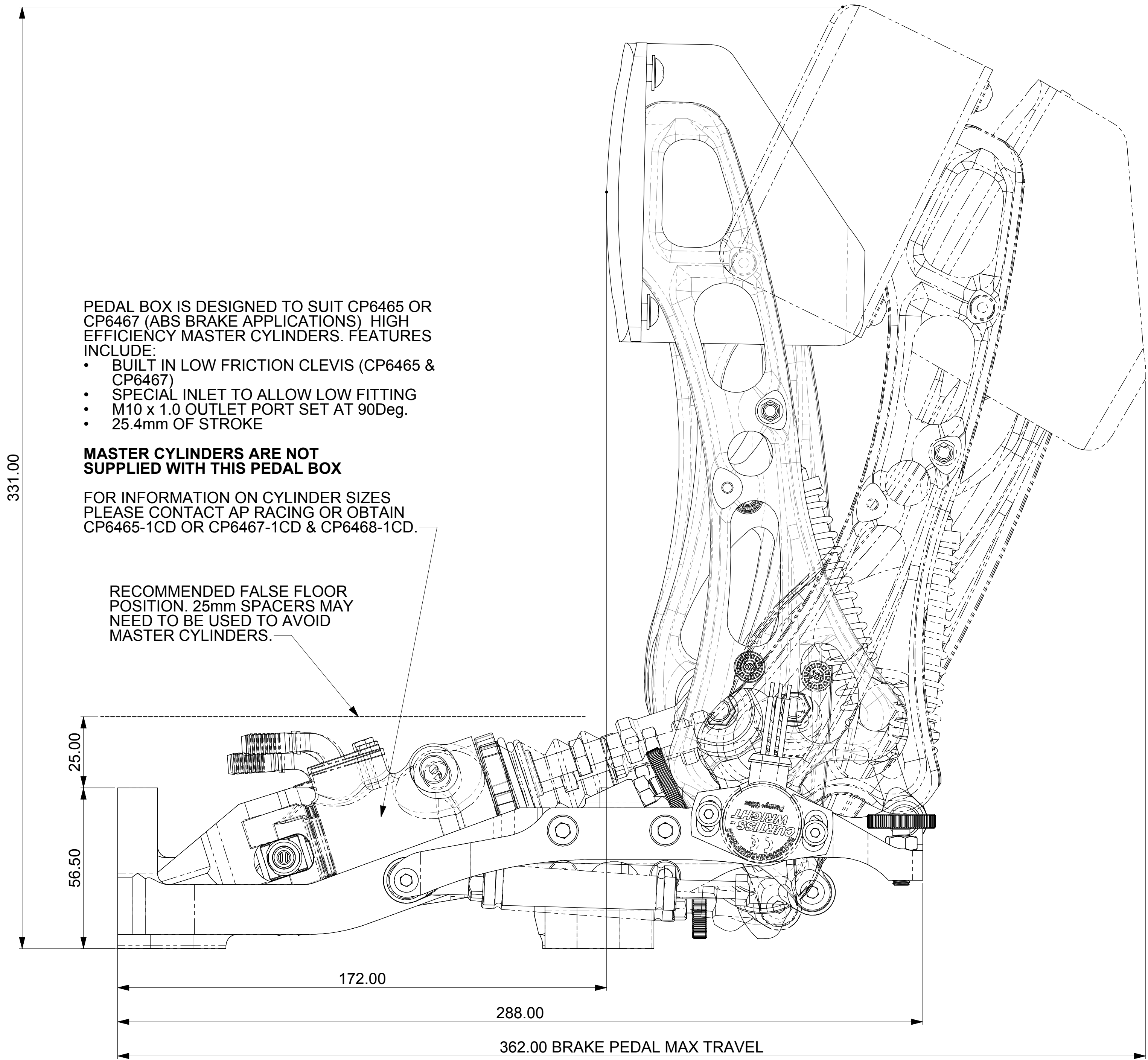
THIS DRAWING IS CONFIDENTIAL AND IS SUPPLIED ON THE EXPRESS CONDITION THAT IT SHALL NOT BE LOANED OR COPIED OR DISCLOSED TO ANY OTHER PERSON OR USED FOR ANY OTHER PURPOSE WITHOUT THE WRITTEN CONSENT OF AP RACING LTD.



AP Racing
Wheler Road
Coventry
CV3 4LB
Tel: +44 024 7663 9595
Fax: +44 024 7663 9559
e-mail: sales@apracings.co.uk
Web site: [HTTP://www.apracings.com](http://www.apracings.com)

© AP Racing Ltd. 2019

Issue No.	Alterations		Zone	Initials
	Date & No.	Particulars		
1	14/02/2020 B8169	FIRST ISSUE	#	SGW



GENERAL DESCRIPTION

THIS UNIQUE PULL TYPE DESIGN ALLOWS THE LOAD THROUGH THE CYLINDERS TO REMAIN STRAIGHT DURING OPERATION WHICH ELIMINATES SIDE LOADS THAT YOU SEE IN A PUSH TYPE CYLINDER.

THE CYLINDERS ARE MOUNTED UNDER THE DRIVERS FEET FOR OPTIMUM SPACE UTILISATION AND ACCESS.

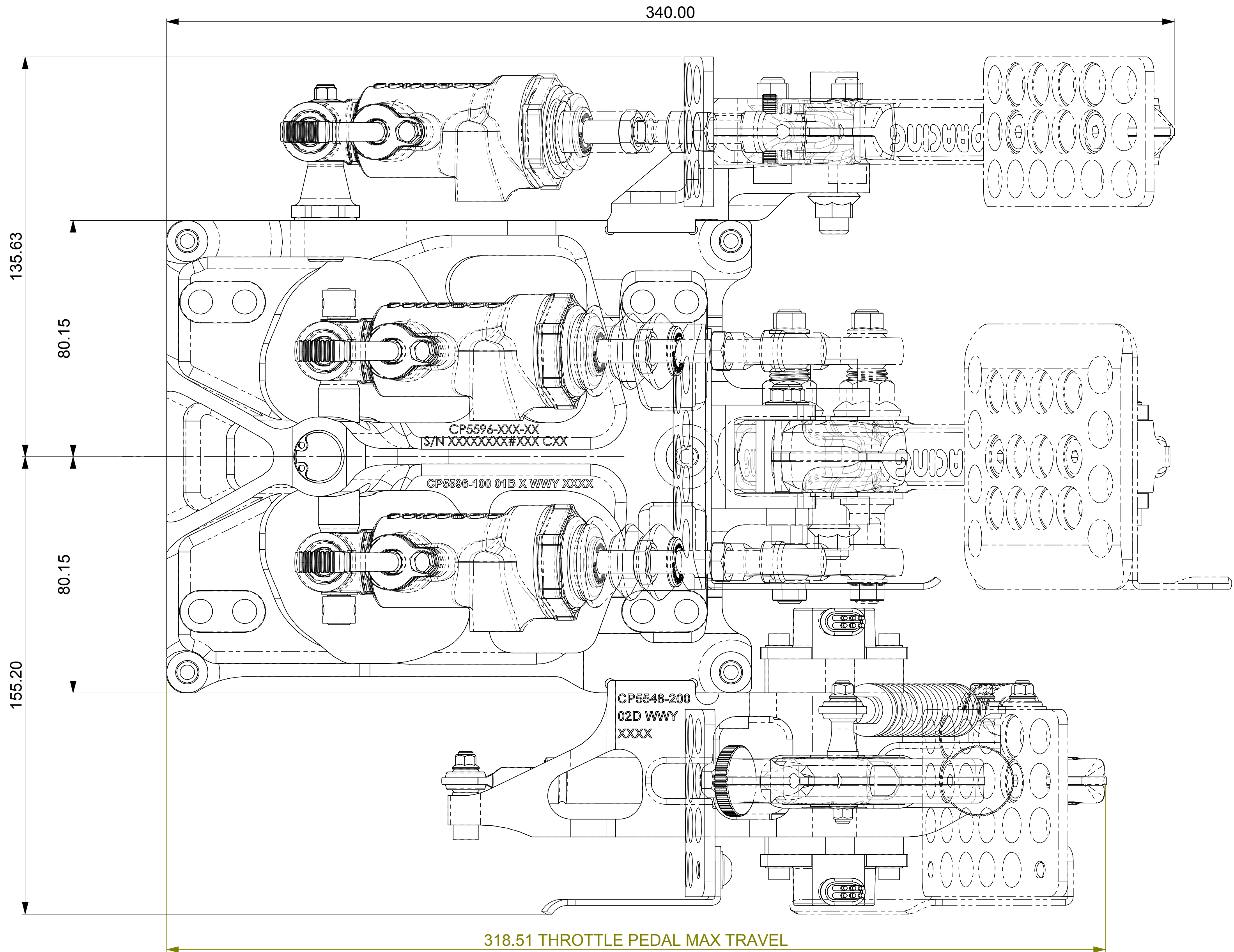
MINIMUM HYSTERESIS AND BALANCE VARIATION ARE ASSURED BY THE USE OF NEEDLE ROLLER BEARINGS IN THE CENTRE TRUNNION.

FEATURES

- LIGHTWEIGHT ALUMINIUM BASE, MACHINED FROM SOLID.
- ALL PEDALS ARE MACHINED FROM ALUMINIUM FORGINGS.
- PEDALS ARE PIVOTED BY BALL BEARINGS TO INCREASE SMOOTHNESS.
- DESIGNED FOR USE WITH CP6465, CP6461 OR CP6467 (ABS BRAKE APPLICATIONS) MASTER CYLINDERS.
- ADJUSTABLE FOOT PADS FOR EXTRA DRIVER COMFORT.
- ADJUSTABLE CLUTCH & THROTTLE PEDAL STOPS.
- BRAKE PEDAL RATIO ADJUSTABLE 4.10:1 TO 5.00:1
- CLUTCH PEDAL RATIO 4.55:1
- DUAL MOUNTINGS FOR THROTTLE POTENTIOMETERS. INBOARD MOUNTING AND SENSOR AVAILABLE IN SEPARATE KIT.
- WEIGHT 3.9kg APPROX WITHOUT CYLINDERS.

PART NUMBERS

CP5596-CBT	CLUTCH, BRAKE & THROTTLE PEDAL BOX ASSEMBLY, NO THROTTLE SENSORS
CP5596-CBT-TS	CLUTCH, BRAKE & THROTTLE PEDAL BOX ASSEMBLY, WITH OUTBOARD THROTTLE SENSOR
CP5596-BT	BRAKE & THROTTLE PEDAL BOX ASSEMBLY, NO THROTTLE SENSORS
CP5596-BT-TS	BRAKE & THROTTLE PEDAL BOX ASSEMBLY, WITH OUTBOARD THROTTLE SENSOR
CP5596-CB	CLUTCH & BRAKE PEDAL BOX ASSEMBLY
CP5596-B	BRAKE ONLY PEDAL BOX ASSEMBLY
CP5596-TS	INBOARD THROTTLE SENSOR KIT



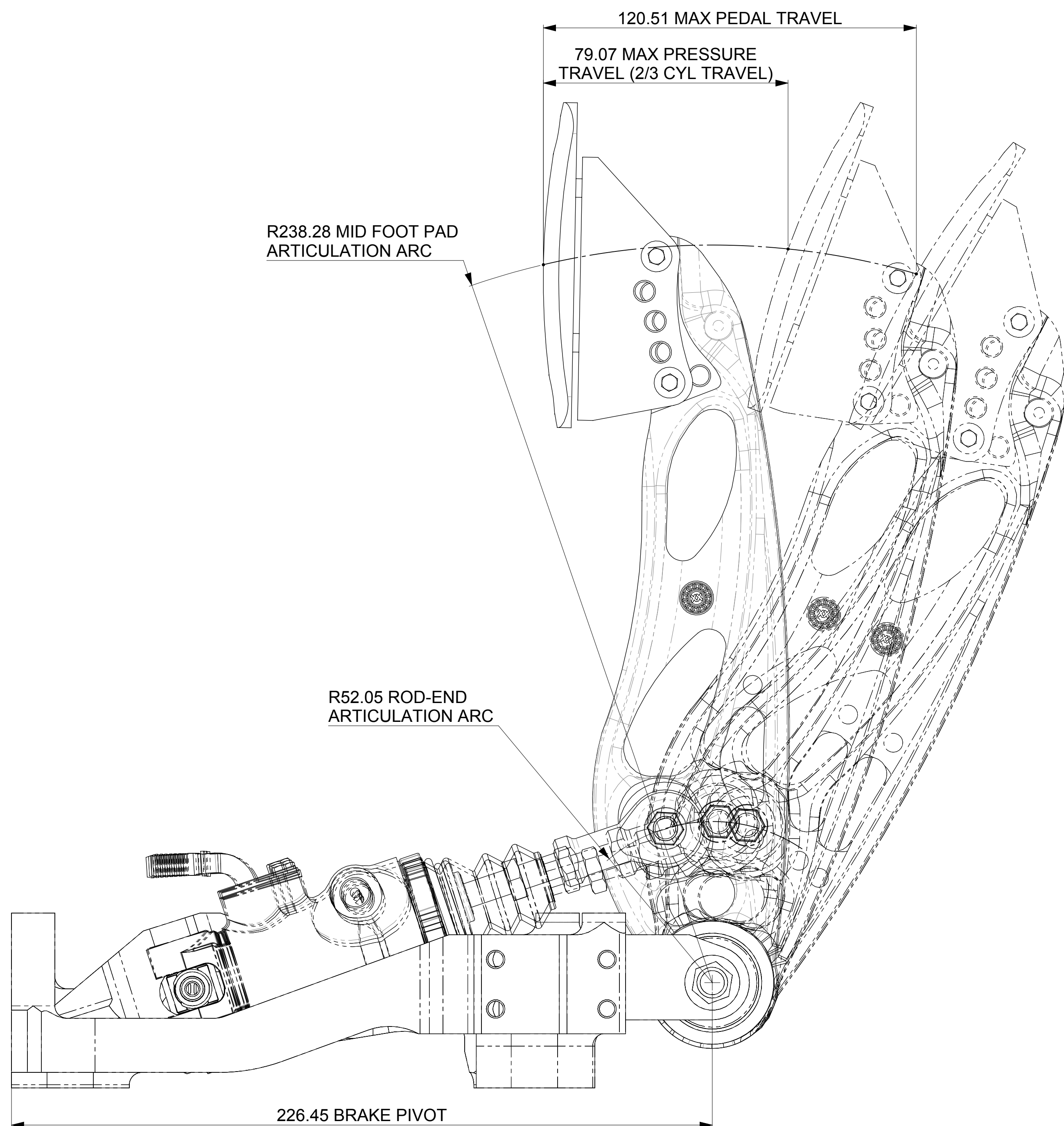
SCALE 1:1	SHEET 1 OF 7
DRAWN	Sten Wahlstrom
APPROVED	
DERIVED FROM	AD5548-1

TITLE
FLOOR MTG PULL TYPE
PEDAL BOX

DRG NO.	CP5596-1CD
---------	------------

SCALE 1:1	SHEET 2 OF 7
DRAWN	Sten Wahlstrom
APPROVED	
DERIVED FROM	
TITLE	
CABLE ADJUSTERS	
DRG NO.	CP5596-1CD

THE DAMPER HAS AN ADJUSTABLE RATE OF 20-800N, IT IS ADJUSTED BY POSITIONING IT IN THE MOST EXTENDED OR COMPRESSED POSITION AND TWISTING THE ROD. THE DAMPER IS SET TO MEDIUM DAMPING AS SUPPLIED.



BRAKE PEDAL RATIO ADJUSTMENT BOBBINS.

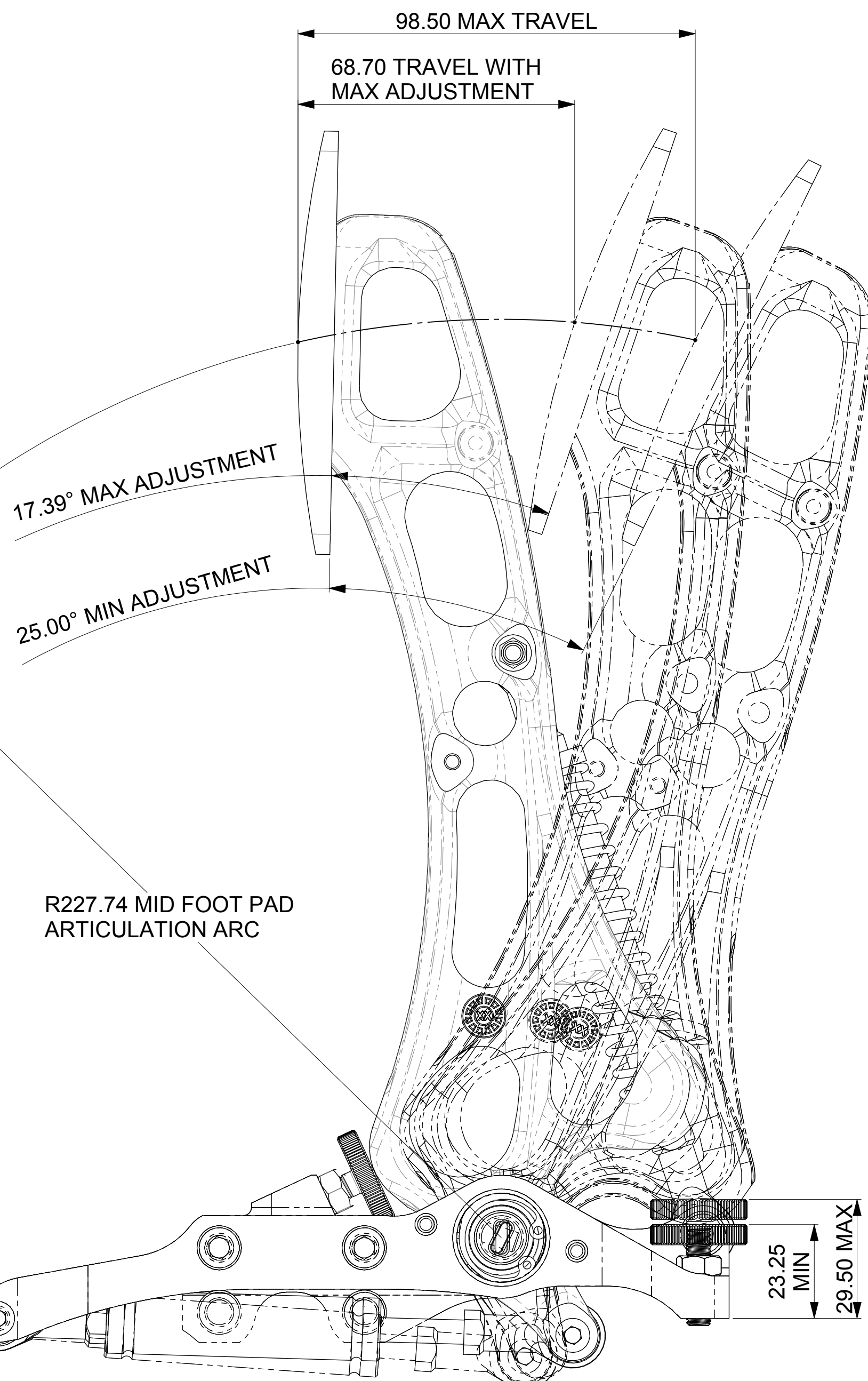
CP5576-105 - NOMINAL - 4.55:1

CP5576-106 - OFFSET - 5.00:1 OR 4.10:1

PEDAL BOX IS SUPPLIED WITH 1-OFF
CP5576-105. OFFSET ADJUSTMENT
BOBBIN CP5576-106 CAN BE BOUGHT
SEPARATELY.



TAIL 100 OFFSET
GP5576-106



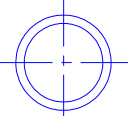
Technical drawing of a brake assembly (CP360-100 01B X WWV XXXX) showing dimensions and a brake pivot detail.

Dimensions (mm):

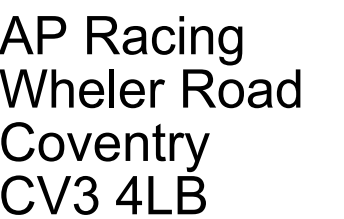
- Overall width: 191.45
- Overall height: 176.45
- Top section height: 50.00
- Side section height: 15.00
- Bottom section height: 150.00
- Bottom flange height: 17.45
- Bottom flange width: 7.00
- Internal width (left): 73.15
- Internal width (right): 73.15
- Internal width (center): 52.50
- Internal width (center): 52.50

Label: BRAKE PIVOT

Part Number: CP360-100 01B X WWV XXXX



THIS DRAWING IS CONFIDENTIAL AND IS SUPPLIED ON THE EXPRESS CONDITION THAT IT SHALL NOT BE LOANED OR COPIED OR DISCLOSED TO ANY OTHER PERSON OR USED FOR ANY OTHER PURPOSE WITHOUT THE WRITTEN CONSENT OF AP RACING LTD.



Tel: +44 024 7663 9595
Fax: +44 024 7663 9559
e-mail: sales@spinning.co.uk

© AP Racing Ltd. 2019 Web site: [HTTP://www.apracing.com](http://www.apracing.com)

DUAL REDUNDANCY PENNY & GILES SRH302 SENSOR

Measurement range	20-360° in 1° increments
Supply voltage	5Vdc +0.5Vdc and 9-30Vdc - auto selects
Supply current	<17.5mA per output channel
Supply reverse polarity protection	Yes
Short-circuit protection to GND	Yes
Short-circuit protection to supply	Only with 5Vdc regulated supply
Over-voltage protection	Up to 40Vdc
Power-on settlement	>1s
Resolution	12-bit (0.025° of measurement range)
Linearity (absolute)	+/-0.4%
Temperature coefficient	<30ppm/°C in 5Vdc mode, <110ppm/°C in 9-30Vdc mode

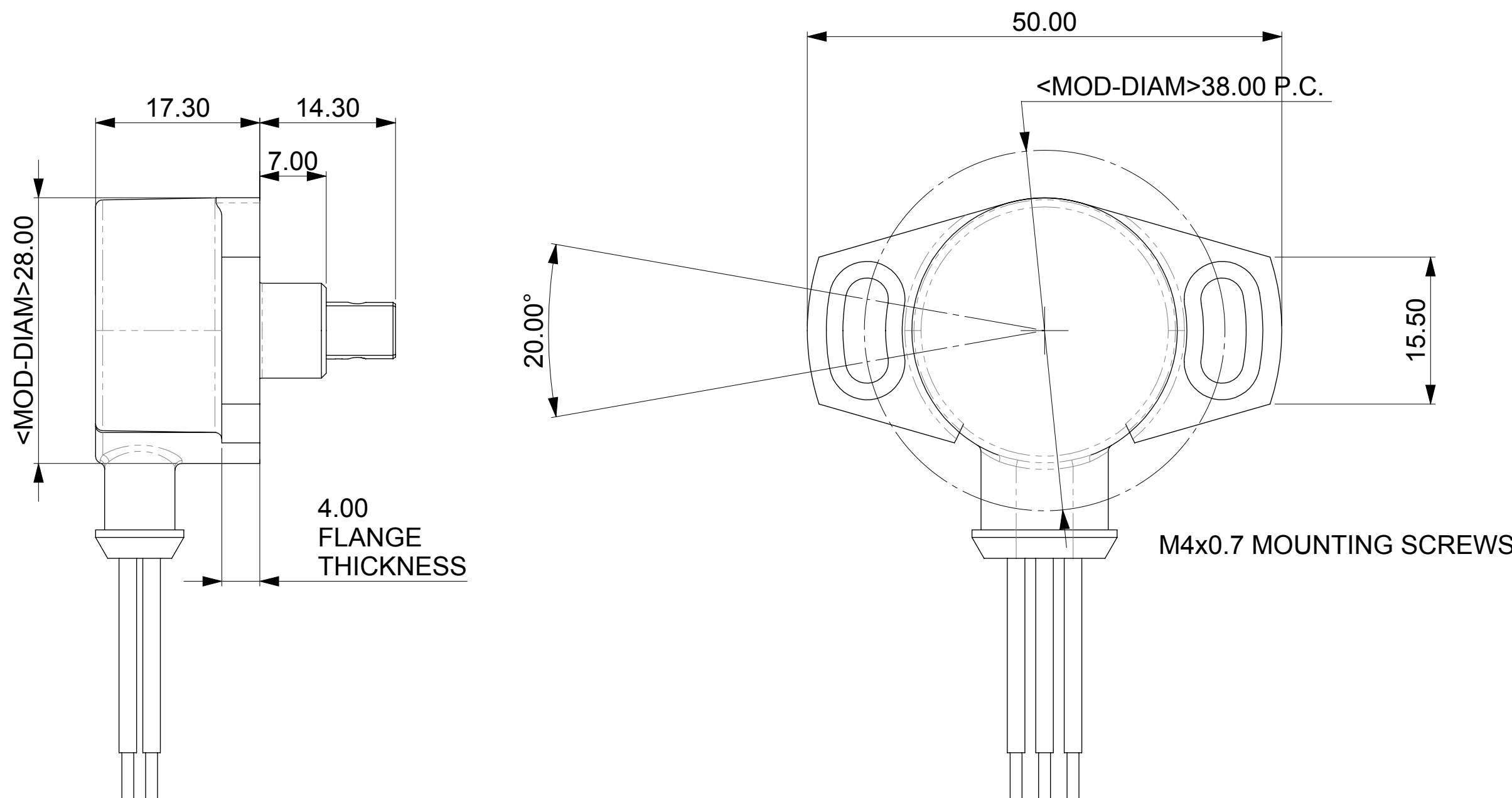
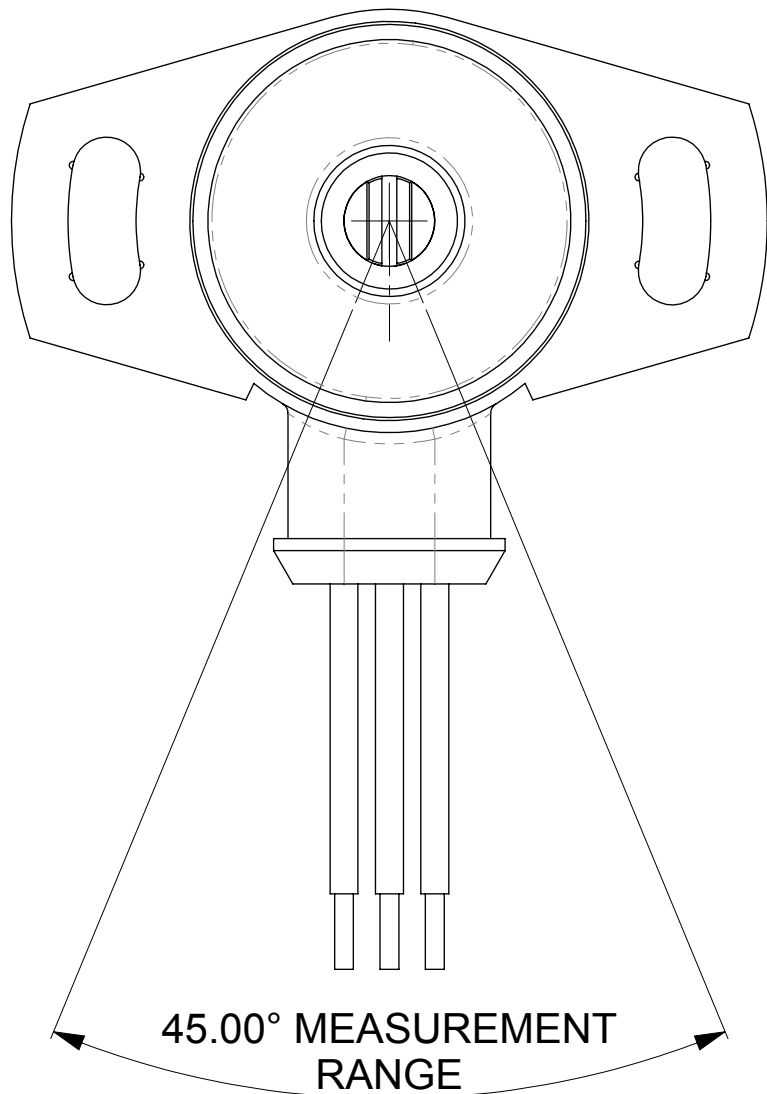
0.5-4.5V output option (5V supply)	10-90% $\pm 1\%$ of Vsupply over measurement range
0.5-4.5V output option (9-30V supply)	0.5-4.5V $\pm 3\%$ absolute
Monotonic range (0.5-4.5V output option)	5%/0.25V to 95%/4.75V nominal
0.2-4.8V output option (5V supply)	4-96% $\pm 1\%$ of Vsupply over measurement range
0.2-4.8V output option (9-30V supply)	0.2-4.8V $\pm 3\%$ absolute
Monotonic range (0.2-4.8V output option)	2%/0.1V to 98%/4.9V nominal
Load resistance	10kOHM min. (resistive to GND)
Output noise	<1mV rms
Input/output delay	<2ms

Mechanical angle	360° continuous
Operating speed, MAX	3600°/S
Torque	120 gm cm max
Weight	<70g
Mounting	2x holes to suit M4 screws tightened to 2.9Nm
Cable	18AWG 1.65mm OD

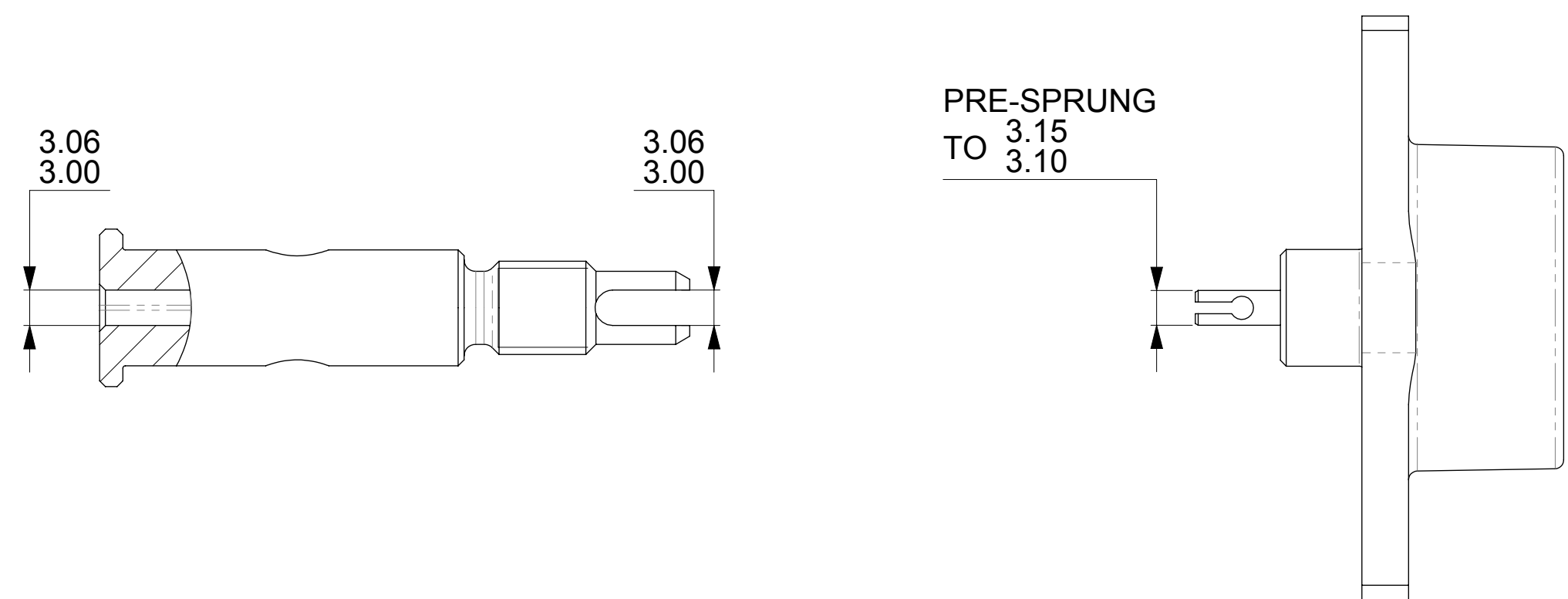
Operating temperature	-40°C to 140°C (-40°C to 120°C if conduit fitted)
Storage temperature	-40°C to 15.7°C at 9V (de-rate by 1.7°C for each 1V increase)
Sealing	-40°C to 140°C (-40°C to 120°C if conduit fitted)
Vibration	IP69K (excluding connector) if conduit fitted
Shock	BS EN 60068-2-64: 1995 Sec 8.4 (31.4g rms) 20 to 2000Hz
FE	Survival to 2500g all axes
MTTFd	20 million operations
Electromagnetic interference	>300 years
	EN 61000-4-6 to 100V/m 80-1000MHz & 1.4-2.7GHz

4-core cable, 18 AWG

Blue	V+ 2
Green	GND 2
White	OUTPUT 2



PIVOT SHAFT SLOT DETAIL



SCALE 1:1	SHEET 3 OF 7
DRAWN	Sten Wahlstrom
APPROVED	
DERIVED FROM	

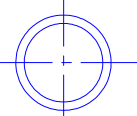
TITLE

FLOOR MTG PULL TYPE

SLIDING PEDAL BOX 2nd GEN

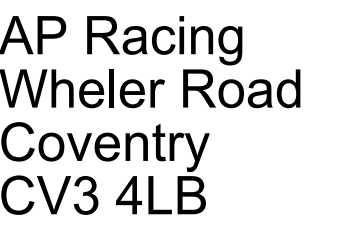
DRG NO.	CP5596-1CD
---------	------------

IF THIS DOCUMENT IS PRINTED IN HARDCOPY,
IT IS FOR INFORMATION USE ONLY AND THEREFORE
IS NOT SUBJECT TO UPDATING CONTROLS. ALWAYS
REFER TO SOLIDWORKS VIEWER FOR LATEST ISSUE



FIRST ANGLE PROJECTION

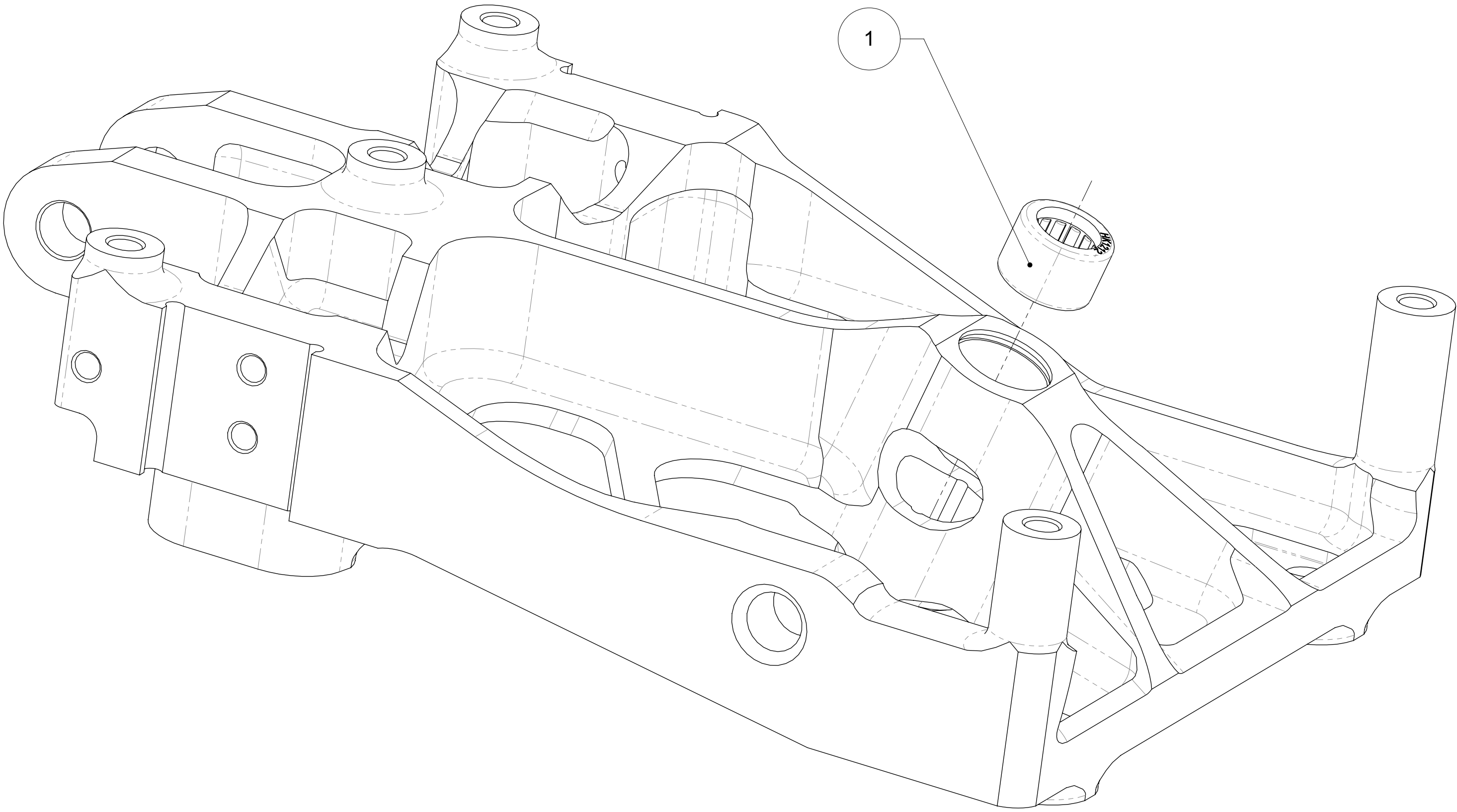
THIS DRAWING IS CONFIDENTIAL AND IS SUPPLIED ON THE EXPRESS CONDITION THAT IT SHALL NOT BE LOANED OR COPIED OR DISCLOSED TO ANY OTHER PERSON OR USED FOR ANY OTHER PURPOSE WITHOUT THE WRITTEN CONSENT OF AP RACING LTD.



Tel: +44 024 7663 9595
Fax: +44 024 7663 9559
e-mail: sales@apracing.co.uk

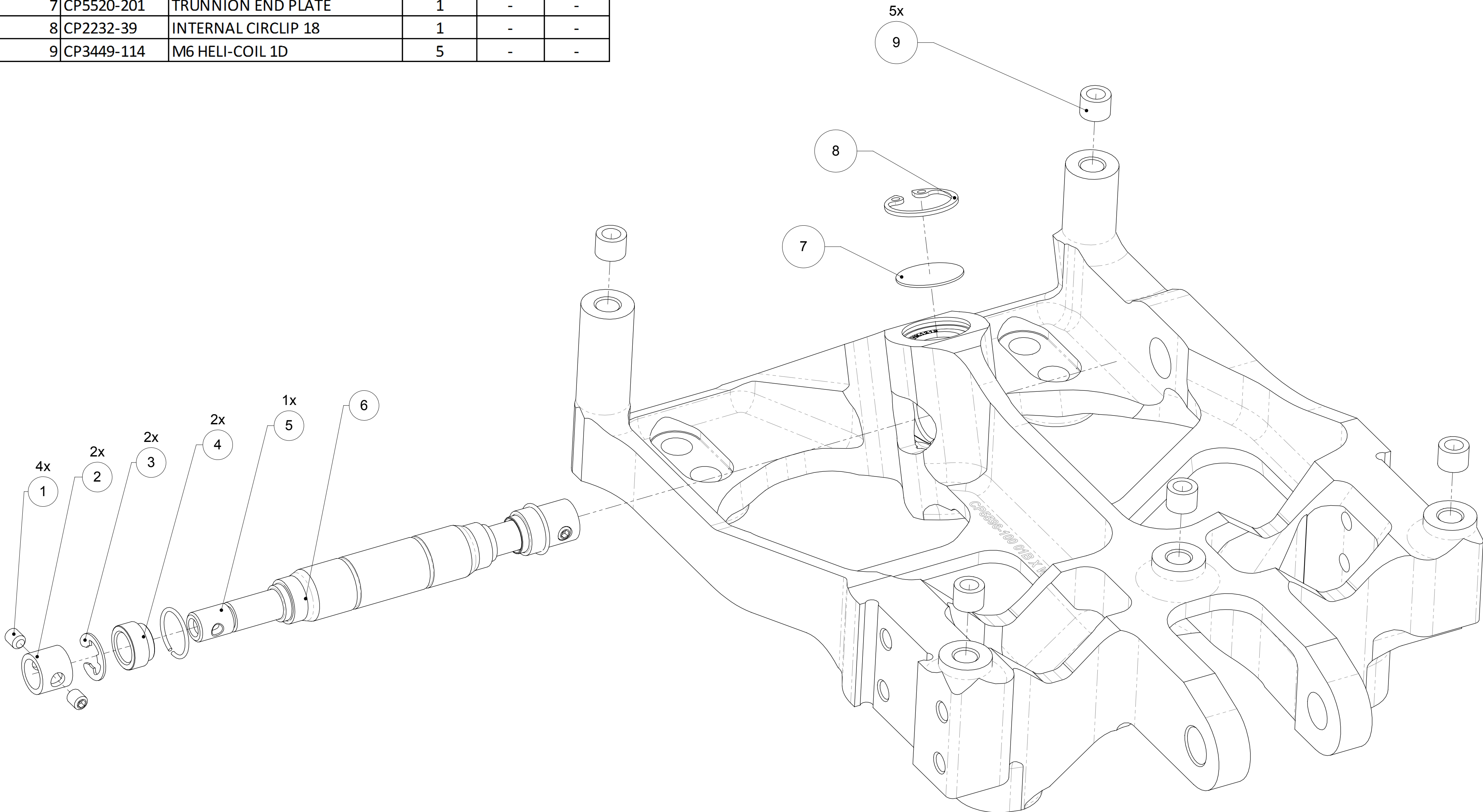
© AP Racing Ltd. 2019 Web site: [HTTP://www.apracing.com](http://www.apracing.com)

Issue No.	Alterations		Zone	Initials
	Date & No.	Particulars		
-	-	SEE SHEET 1 FOR ISSUE INFORMATION.	-	-



SQUARE BOX AROUND ITEM No. INDICATES
THAT LOCTITE IS USED

OP4					
ITEM No.	PART No.	DESCRIPTION	QTY	TORQUE	LOCITE
1	CP5500-1135T	GRUB SCREW M4x5	4	-	-
2	CP5517-160	BALANCE BAR BACKUP SPACER	2	-	-
3	CP5517-123	CIRCLIP	2	-	-
4	CP5517-124	BALANCE BAR SPACER	2	-	-
5	CP5517-161	SNAPRING	2	-	-
6	CP5716-105	BALANCE BAR	1	-	-
7	CP5520-201	TRUNNION END PLATE	1	-	-
8	CP2232-39	INTERNAL CIRCLIP 18	1	-	-
9	CP3449-114	M6 HELI-COIL 1D	5	-	-



SCALE 3:2	SHEET 4 OF 7
-----------	--------------

DRAWN	Sten Wahlstrom
-------	----------------

APPROVED

DERIVED FROM	AD5548-1
--------------	----------

TITLE

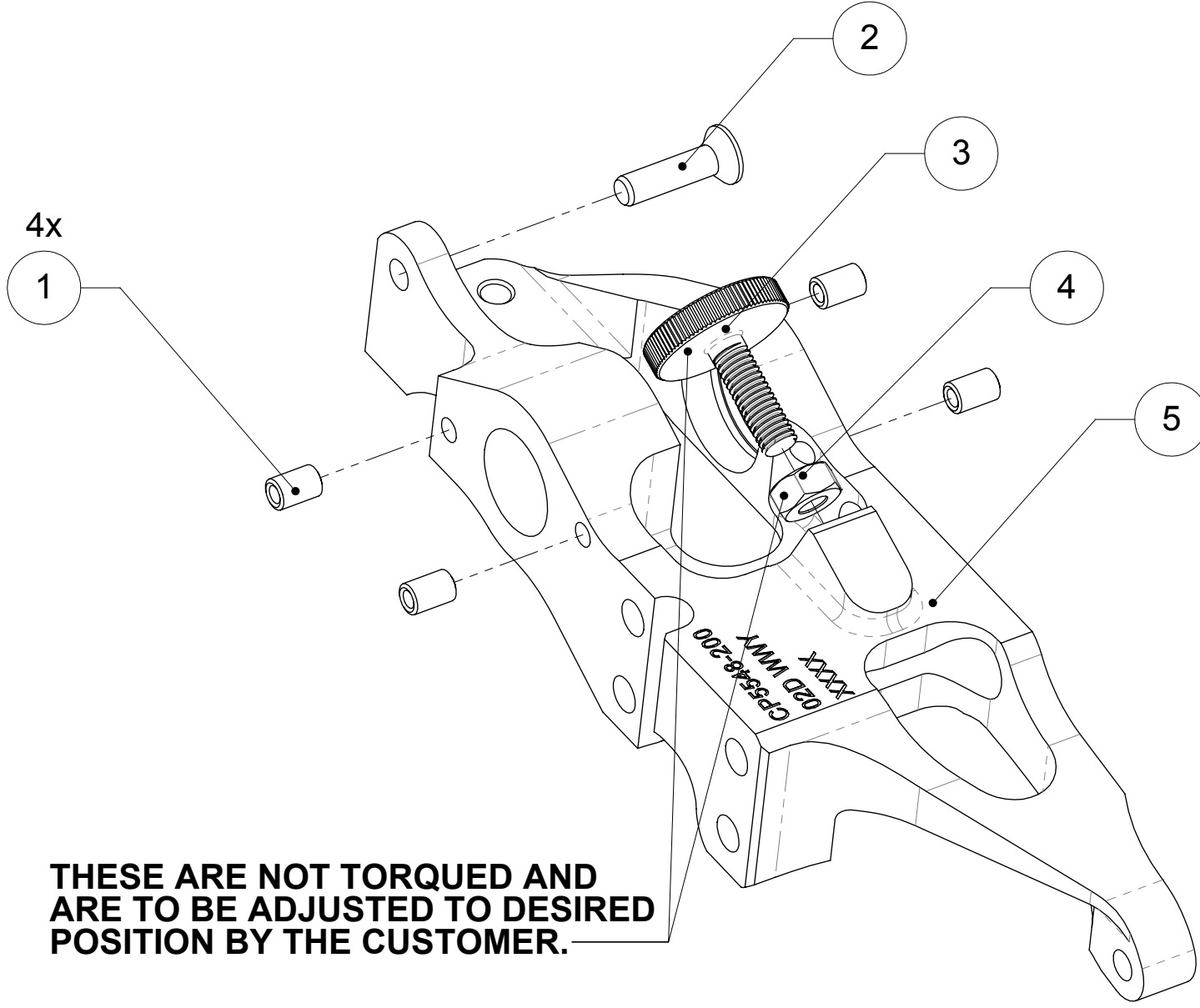
FLOOR MTG PULL TYPE
PEDAL BOX

DRG NO.	CP5596-1CD
---------	------------

THROTTLE

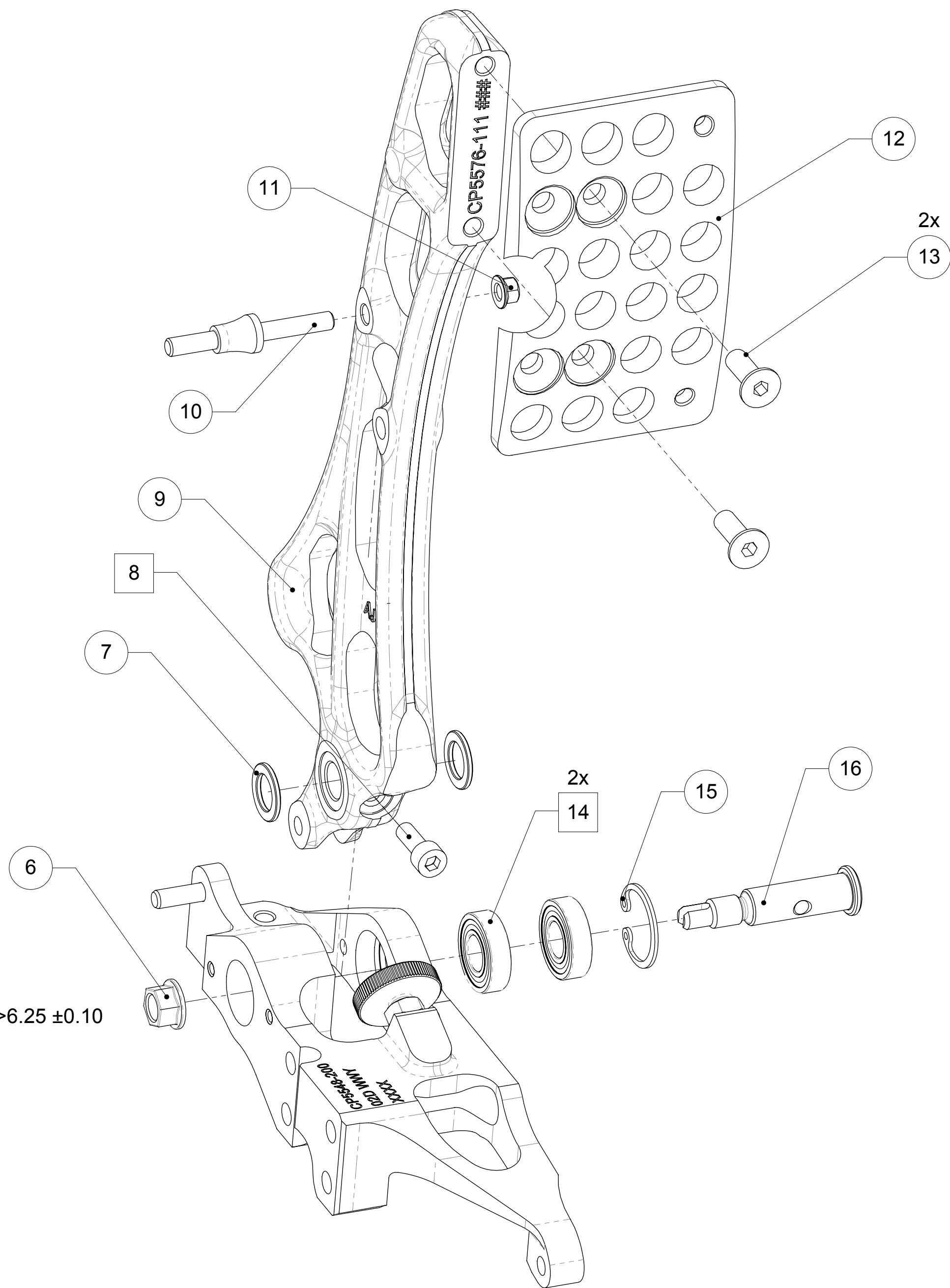
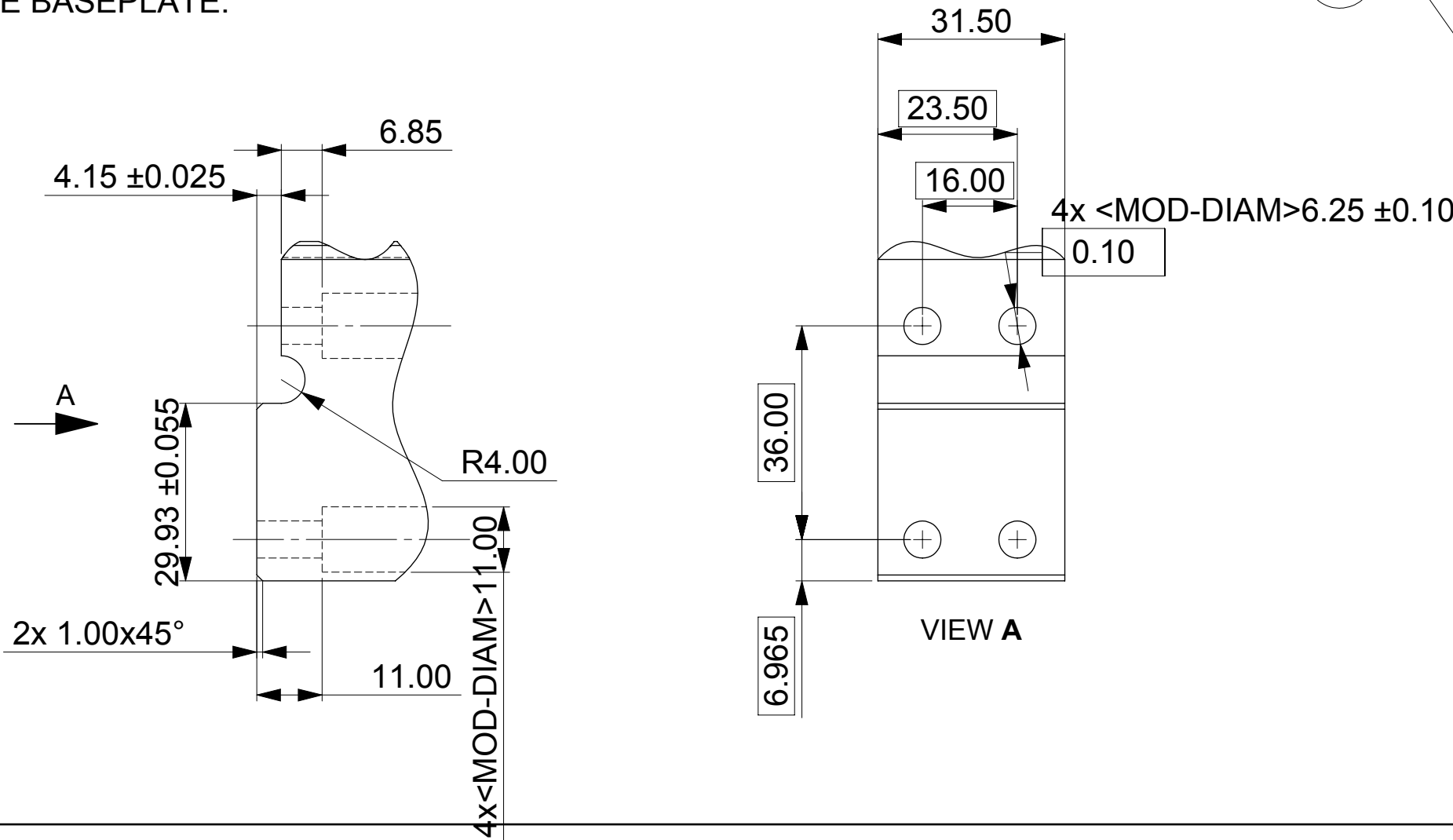
THROTTLE					
ITEM No.	PART No.	DESCRIPTION	QTY	TORQUE	LOCTITE
1	CP2494-3037	HELICOIL-M4x0.70x2.0DLK	4	-	-
2	CP2494-3078	SCREW-M5x20 CSK	1	6.8Nm	-
3	CP5548-204	KNURLED SCREW M6x1.00	2	SEE NOTE	-
4	ME21001	NUT M06x1.00	2	SEE NOTE	-
5	CP5548-200	THROTTLE PEDAL BRACKET	1	-	-
6	CP4611-111	NUT M8x1.25 KAYLOCK	1	25Nm	-
7	CP5538-208	SPACER RING	2	-	-
8	CP5516-208	BOLT -M5x14x0.8 CAP	1	6.8Nm	243
9	CP5576-111	THROTTLE PEDAL	1	-	-
10	CP5548-206	SPRING MECHANISM ATTACHMENT	1	-	-
11	CP5576-126	NUT M5x0.80 KAYLOCK	5	6.8Nm	-
12	CP5516-167	THOTTLE PEDAL FOOTPAD	1	-	-
13	CP4350-106	SCREW-M6x14 CSK	2	10Nm	-
14	CP5516-140	BRG BALL-22.0x10.0x06.0	2	-	648
15	CP5516-162	CIRCLIP INT 23.10	1	-	-
16	CP5548-202	THROTTLE PIVOT SHAFT	1	-	-
17	CP5548-208	ROD END M5x0.8	4	-	243
18	CP9100-132	BOLT-M5x10x0.80 CAP	1	2Nm	243
19	CP5548-211	SPRING STRUT BODY	1	-	-
20	CP5548-212	SPRING STRUT ROD	1	-	-
21	CP5576-117	COMPRESSION SPRING	1	-	-
22	CP5548-207	HYDRAULIC DAMPER	1	-	-
23	CP5896-144	WASHER-9.0x5.3x1.0	2	-	-
24	CP5500-119	BOLTMCM-M05x025 CAP	2	6.8Nm	-
25	CP4360-116	SCREW-M6x20 CAP	4	10Nm	243
26	CP2494-1305	WASHER-12.5x06.5x0.80	2	-	-
27	CP5516-164	THOTTLE GUARD PLATE	1	-	-
28	CP2749-194	SCREW-M6x8 BUT	2	8Nm	243
29	CP5548-203	THROTTLE SENSOR PLATE	1	-	-
30	CP5548-209	THROTTLE POSITION SENSOR	1	-	-
31	CP7000-170	WASHER-9.0x4.2x0.8	2	-	-
32	CP3833-182	SCREW-M4x16 CAP	2	3.5Nm	-

SQUARE BOX AROUND ITEM No. INDICATES
THAT LOCTITE IS USED

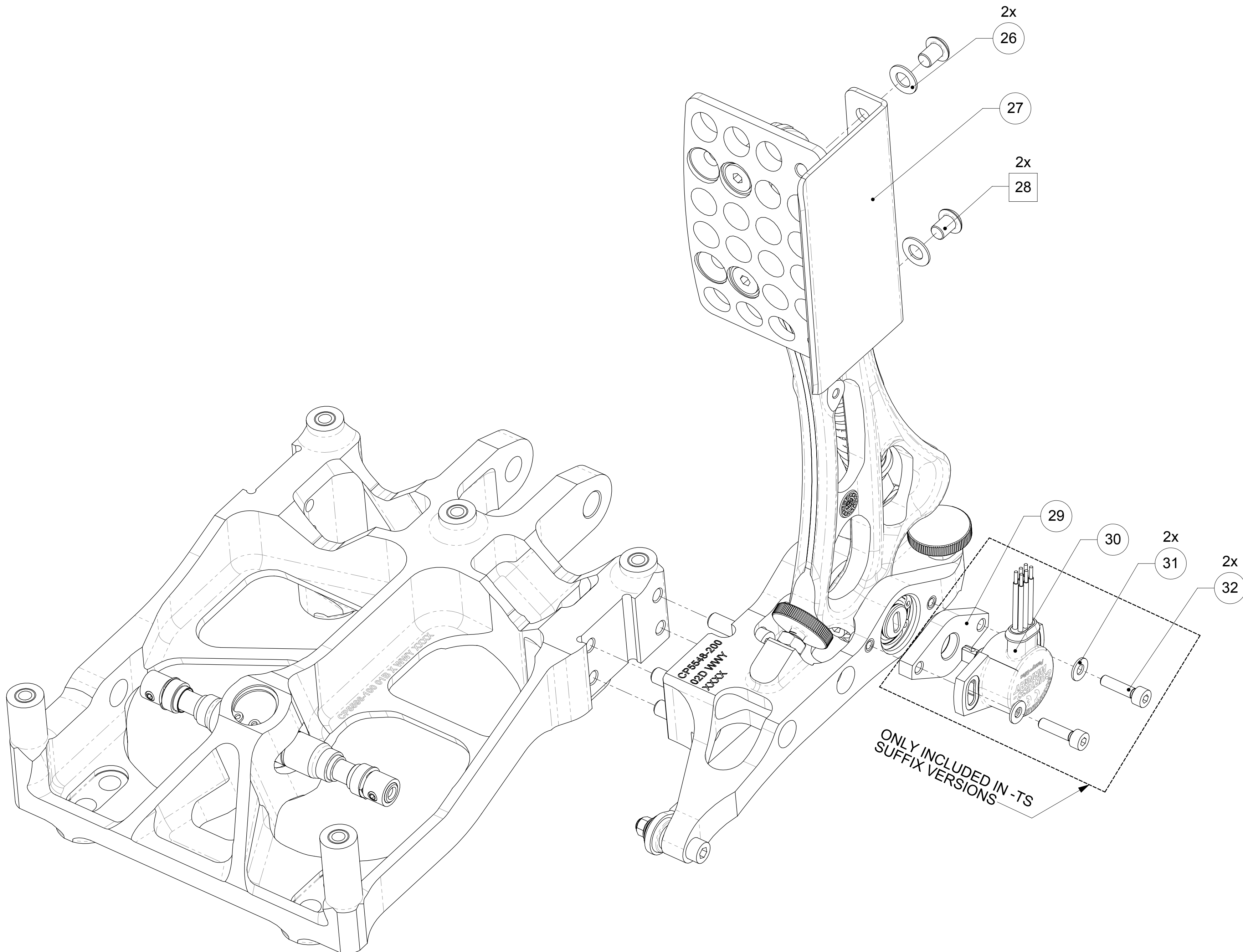
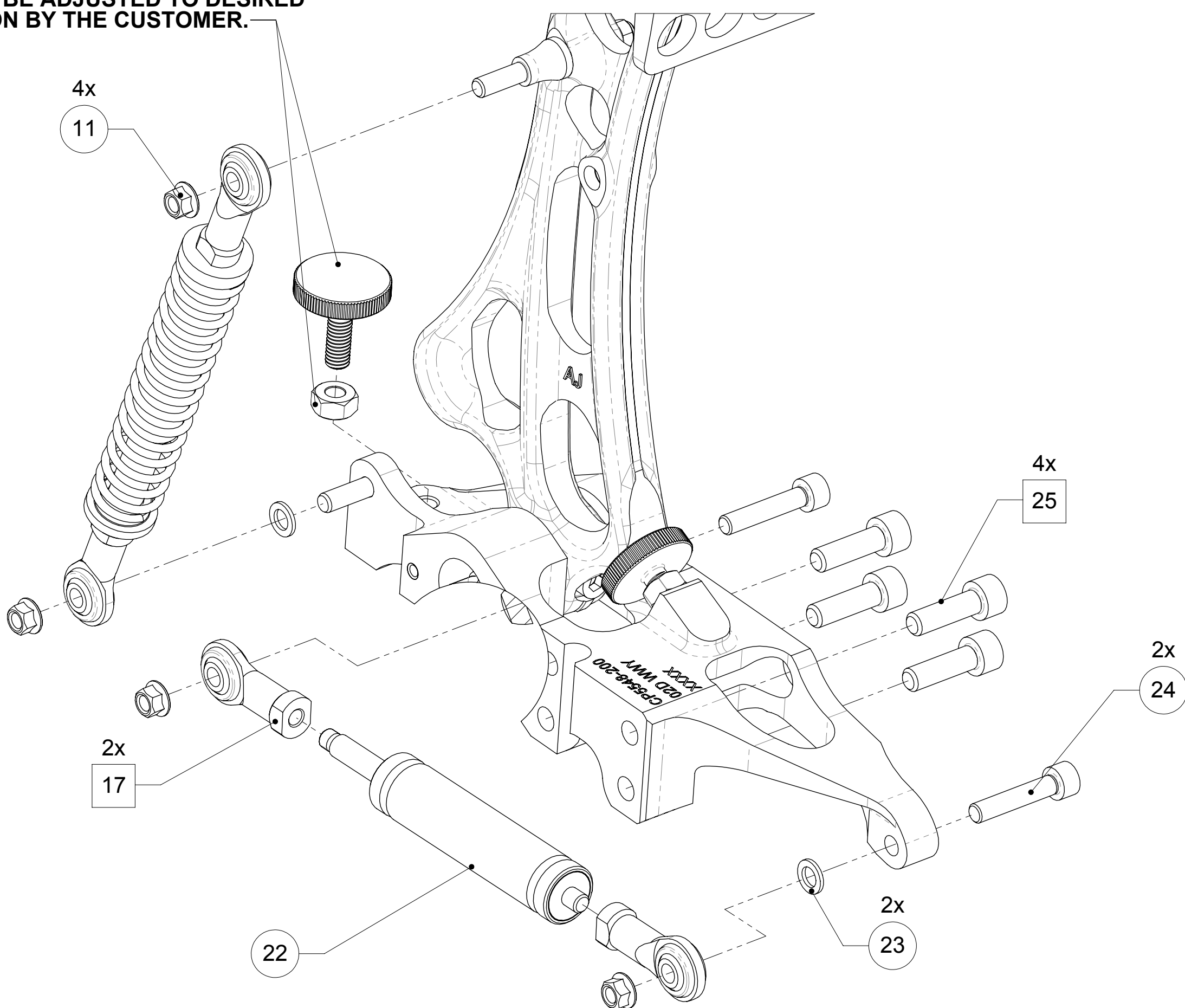
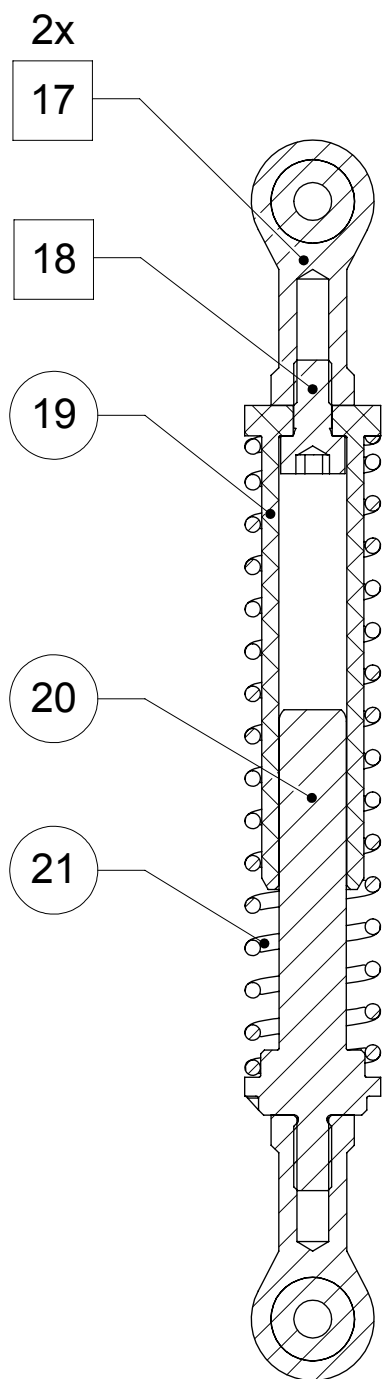


THROTTLE BRACKET DIMENSIONS

SUGGESTED INTERFACE DIMENSIONS FOR MOUNTING THROTTLE MODULE TO
THE BASEPLATE.



THESE ARE NOT TORQUED AND
ARE TO BE ADJUSTED TO DESIRED
POSITION BY THE CUSTOMER.



CLUTCH					
ITEM No.	PART No.	DESCRIPTION	QTY	TORQUE	LOCTITE
1	CP5576-103	CLUTCH PEDAL	1	-	-
2	CP5518-127	SPACER RING	3	-	-
3	CP5516-140	BEARING BALL-22.0x10.0x06.0	2	-	648
4	CP5500-318	PEDAL FOOTPAD	1	-	-
5	CP4350-106	SCREW-M6x14 CSK	2	10Nm	-
6	CP5517-132	BOLT-M8x27 CAP	1	25Nm	-
7	CP5506-106	ROD END M8x1.25	1	-	-
8	CP4611-111	NUT M8x1.25 KAYLOCK	1	-	-
9	CP5000-407	BOLTMC-M10x45x1.50 CAP	1	40Nm	-
10	CP5548-204	KNURLED SCREW M6x1.00	1	SEE NOTE	-
11	ME21001	NUT M6x1.00	1	SEE NOTE	-
12	CP5548-150	CLUTCH PEDAL BRACKET	1	-	-
13	CP5427-101	NUT M10x1.50 KAYLOCK	1	-	-
14	CP4360-116	SCREW-M6x20 CAP	3	10Nm	-
15	CP3423-107	NUT M6x1.00 KAYLOCK	1	6.8Nm	-
16	CP5517-124	BALANCEBAR SPACER	1	-	-
17	CP5548-155	CLUTCH ATTACHMENT	1	50	243

SQUARE BOX AROUND ITEM No. INDICATES THAT LOCTITE IS USED

SCALE 1:1

SHEET 7 OF 7

DRAWN

Sten Wahlstrom

APPROVED

DERIVED FROM

AD5548-1

TITLE

FLOOR MTG PULL TYPE
PEDAL BOX

DRG NO.

CP5596-1CD