



MOTORSPORT



WINTAX 4

INSTALLATION

MANUAL



WINTAX 4 is a data processing and analysis software developed by Marelli Motorsport. This software offers to users the possibility to download datas recorded in the ECU during driving and then to view them. It is thus possible to analyze different parameters such as engine operation, chassis behavior or driving.



Which licence to choose?

Depending on the vehicle, several licenses are possible

Choose the vehicle(s) whose data you want to read, then select the license reference.



Then follow the installation instructions below.

	Reference licence			
	4.23.03	4.61.14 *	4.80.06 *	4.80.XX *
Model	3Z9S18423A	3Z9S18890A	904548006A	904577291A
208 RC	X	X		
RCZ	X	X		
308 RC	X	X		
208 R2	X	X		
DS3 R3/R3Max	X	X		
DS3 R5	X	X		
208 R5	X	X		
308 TCR			X	X
208 Racing			X	X
208 Rally4			X	X
Corsa Rally4			X	X
Ypsilon Rally4			X	X
C3 Rally2			X	X

	1x licence / computer
	Dongle USB = Several computer possible

** Only these licenses have the ability to download data stored on an additional on-board USB key*

INSTALLATION

1. Head over to the Stellantis Motorsport library : <https://docs.stellantis-motorsport.com/>

Mediathèque Stellantis Motorsport dédiée à la compétition client :

Retrouvez tous les documents et informations techniques des véhicules des marques Citroën Racing, Peugeot Sport et Opel Motorsport.

Connexion pour interne uniquement
Utiliser votre identifiant Stellantis

CONNEXION (UTILISATEUR STELLANTIS UNIQUEMENT)

➔

CONNEXION (UTILISATEUR EXTERNE STELLANTIS UNIQUEMENT)

Identifiez-vous avec votre email et mot de passe

🔒

➔

Créer un compte (externe uniquement)

+👤

Bienvenue
sur la médiathèque Stellantis
Motorsport

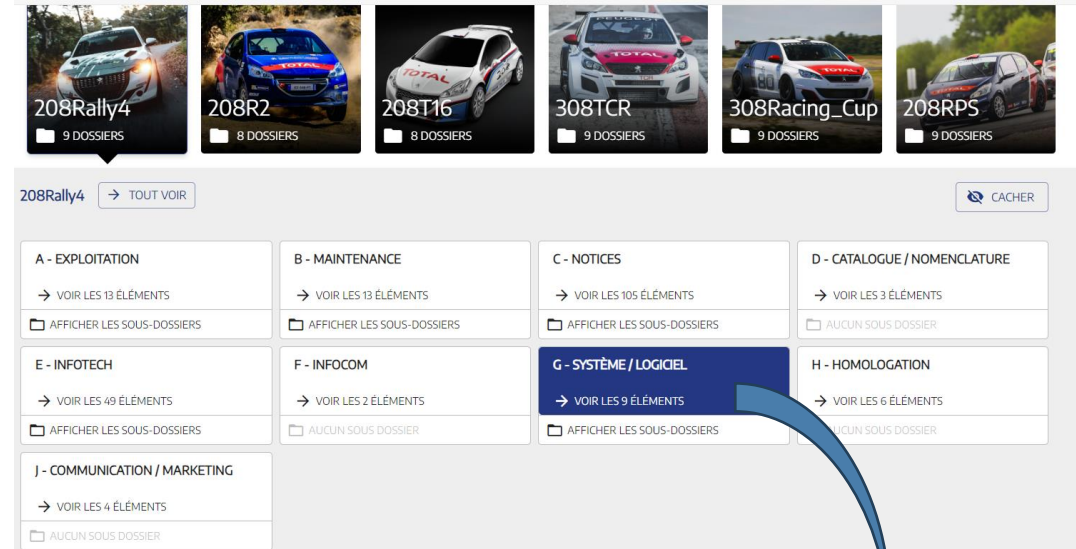
Compétition-client des
marques
Citroën Racing, Peugeot Sport
et Opel Motorsport

2. Enter your login details or **create an account** to access the content.

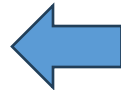
NB: If you are already registered and want to add a new vehicle to your library, **follow the account creation procedure again**

INSTALLATION

1. Download the installation software in the dedicated subfolder:



Install_WTX_4.80.
16.30-64bit_DMS
_VSCC_Client.zip



Install_WTX_4.80.06.09-
64bit_DMS_VSCC_PWD
ZIP 184,6Mo



Install_WTX_4.80.16.30-
64bit_DMS_VSCC_Client
ZIP 235,5Mo

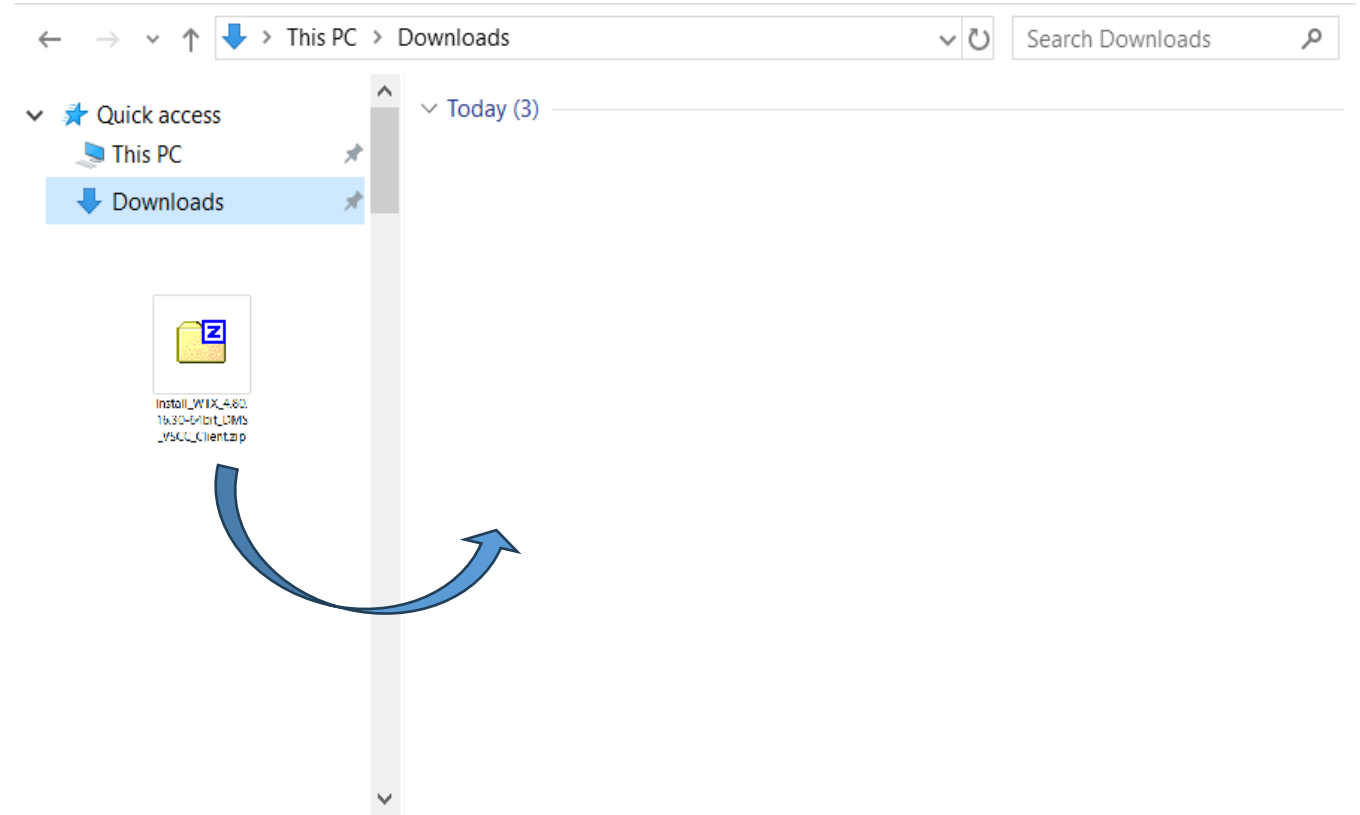


INSTALLATION

1. Create a new folder on the desktop:
Ex:

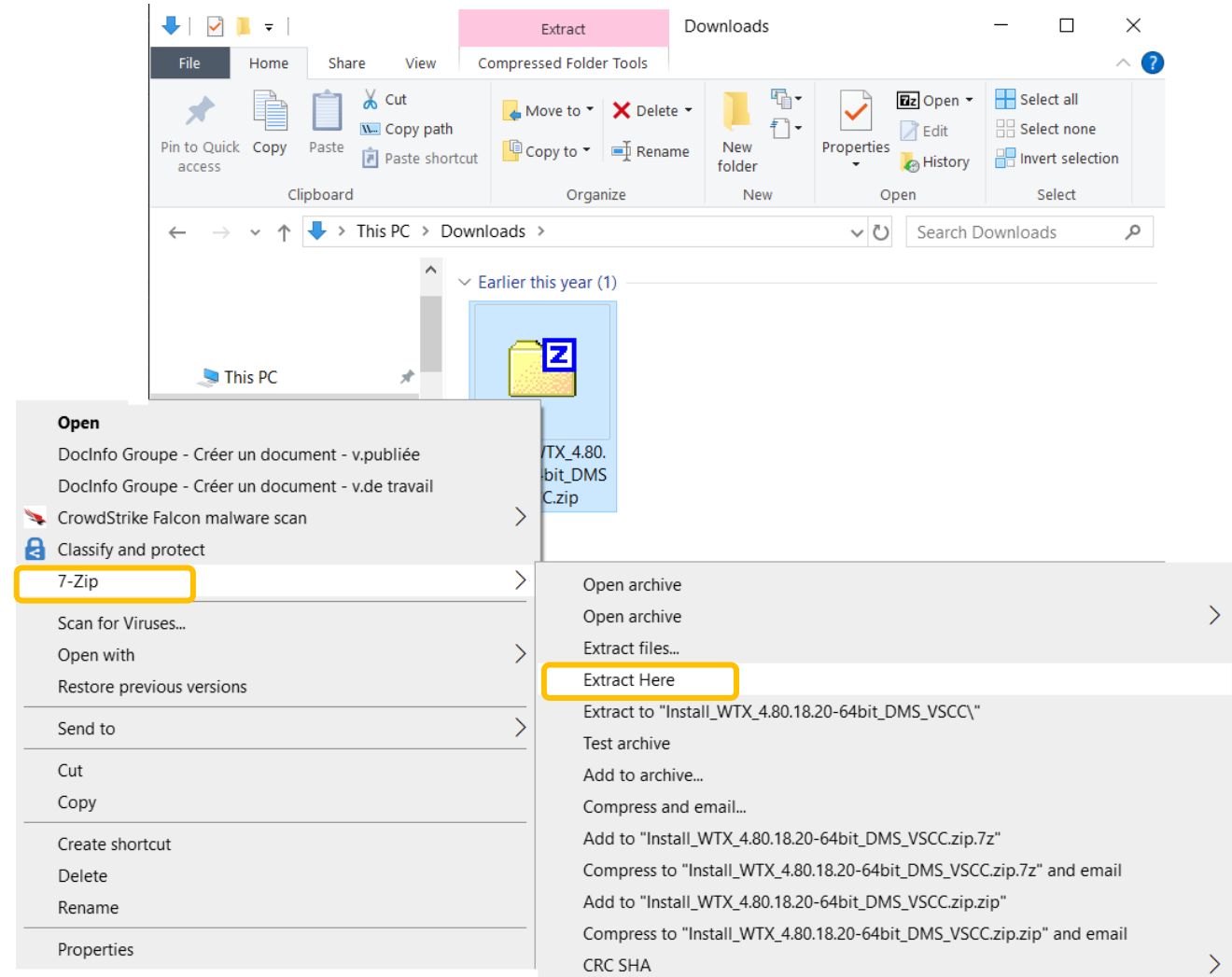


2. Get the installation folder and drag/drop it into the new folder created



1. Right clic on the ZIP file
2. Then **extract Here**

INSTALLATION



INSTALLATION

1. Start the installation:



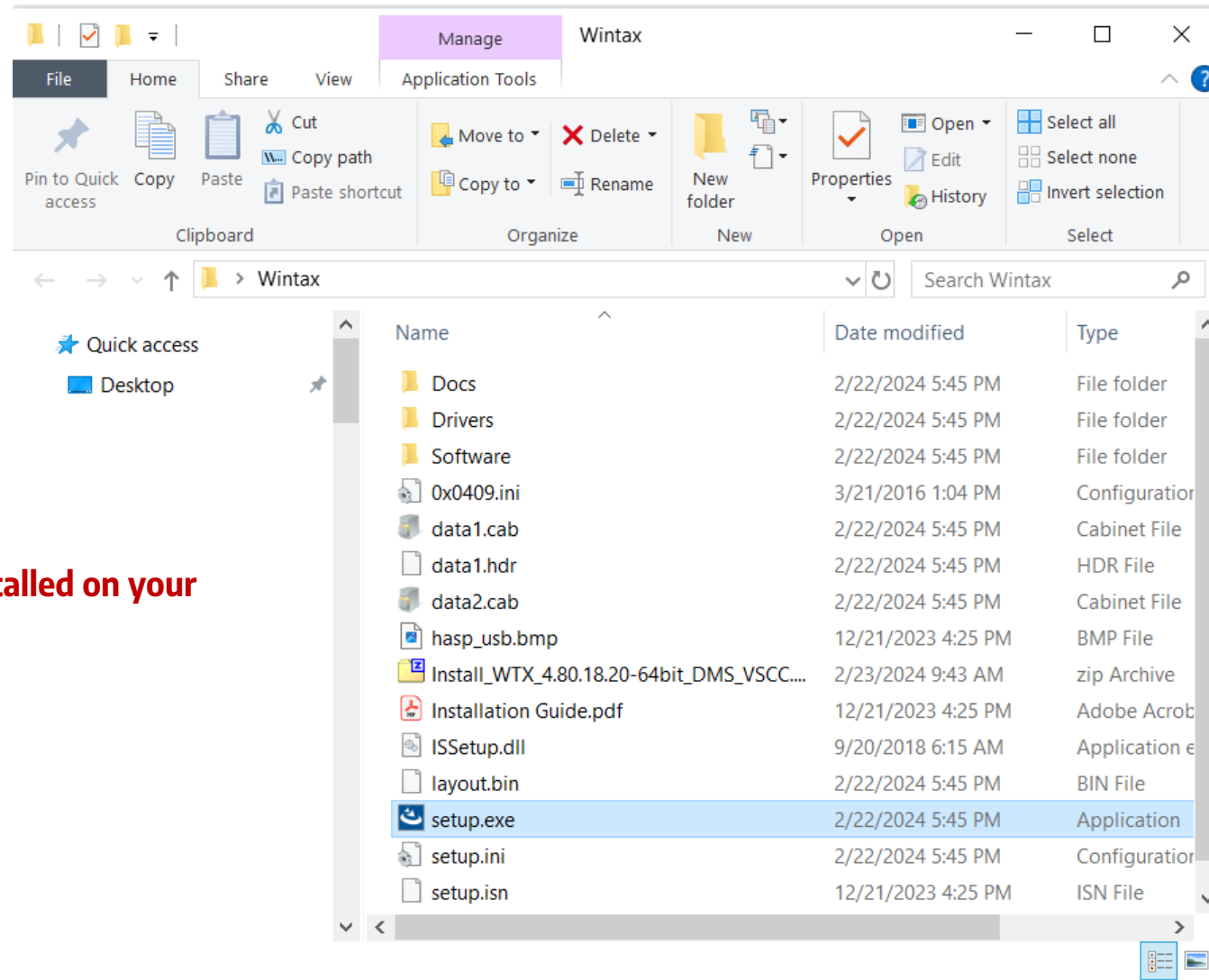
If you already have another version of Wintax4 installed on your computer:



Do not use « Update »



Use « Create a new instance ».



INSTALLATION

1. If you are using a license with a USB dongle



the installation is complete you can go to the next step:

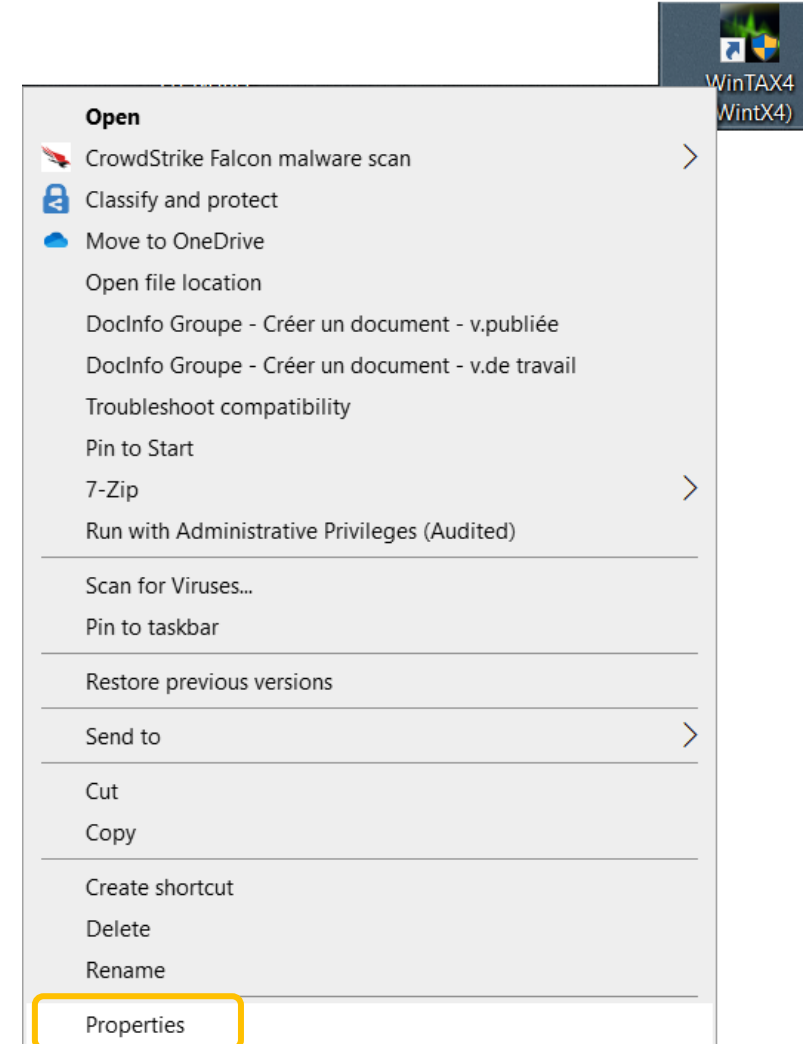


Setting

2. For other licenses, click “**register later**” at the end of the installation

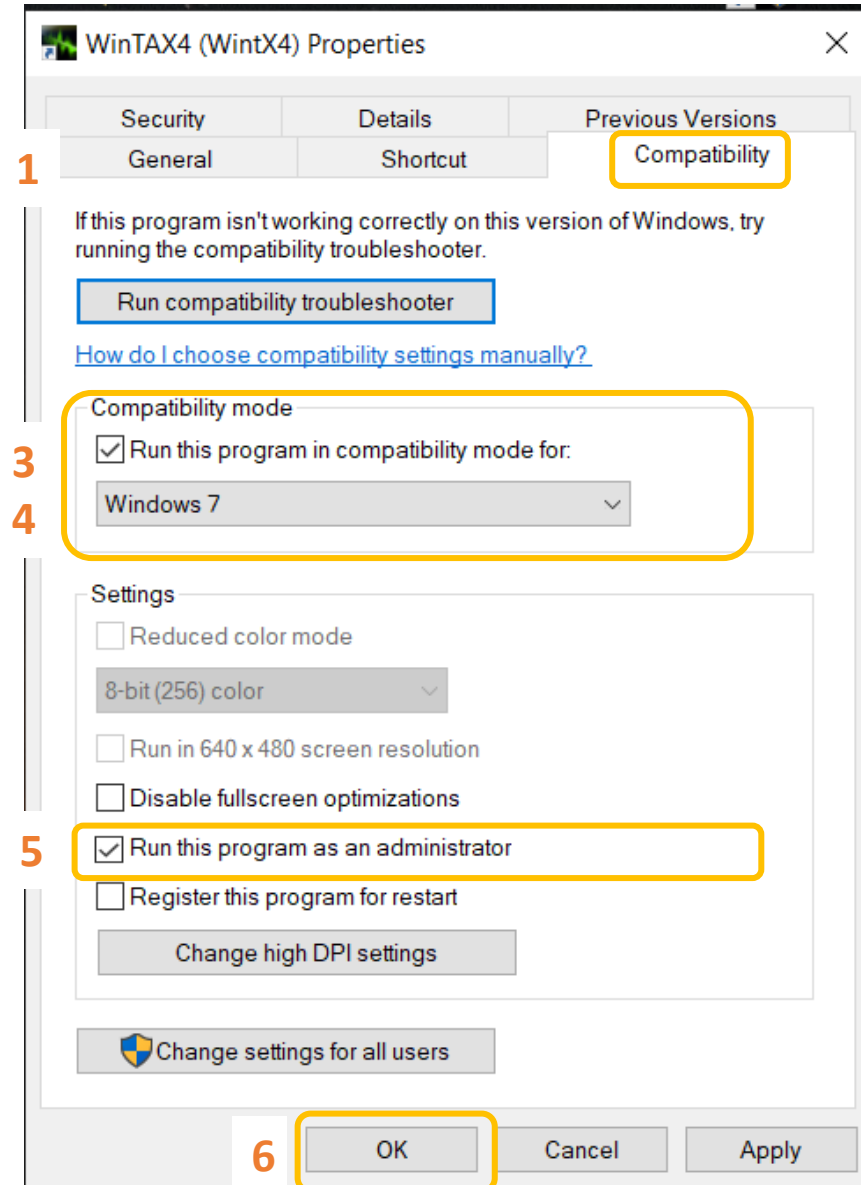
INSTALLATION

1. Right clic on the Wintax4 icon
2. The clic on « **properties** »



INSTALLATION

1. Select the tab « **Compatibility** »
2. In the “**Compatibility Mode**” section
3. Tick « **Run this program in compatibility mode for** »
4. Select **Windows 7** in the drop-down menu
5. Tick « **Run this program as an administrator**»
6. Finish by clicking « **OK** »



INSTALLATION

1. Start the software, a login « ID » appear (**a**)
2. Send by email to : racingshop@stellantis.com :
 - A screen shot of the ID
 - The license purchase invoice
3. You will receive by return email the password allowing you **to complete the installation**
4. « **Start Wintax** »



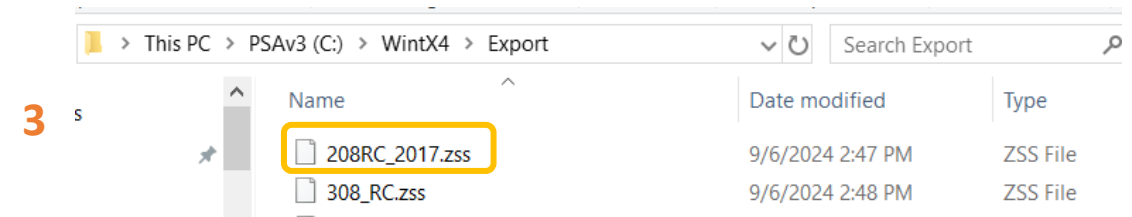
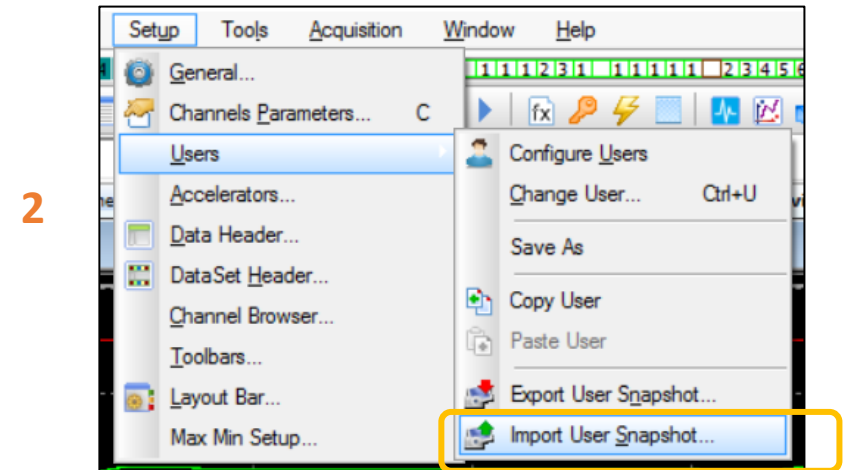
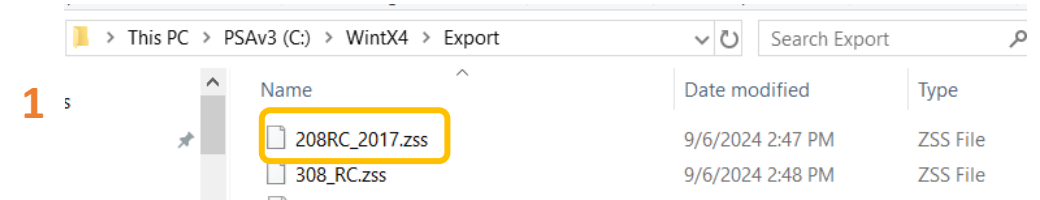
Your Wintax license is associated with the computer on which it is installed. In case of a change of computer, the username and password are no longer valid.

Note: A change of Windows version results in the loss of the license.

USER INSTALLATION:

Each car has a specific Wintax layout called "User". This layout is available as a **.zss** file on the media library. Please find below the procedure to automatically import the User to your computer.

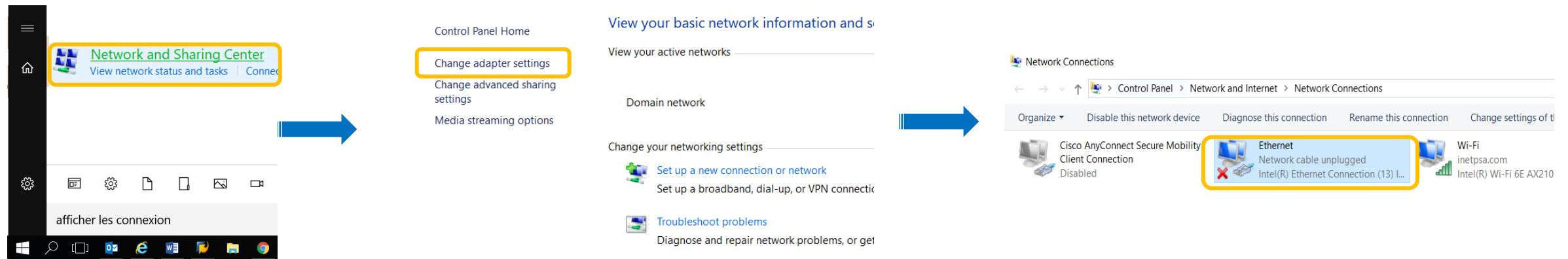
- 1) Copy the **.zss** file → **Past** it in the folder « **C: / Wintax4 / Export** »
- 2) Open Wintax and select :
1/ Setup → 2/ User → 3/ **Import User SnapShot.**
- 3) Select the user you previously pasted then click on **Open.**
 - **Wintax restart automaticly**
 - **the user will be ready to use.**



IP ADDRESS :

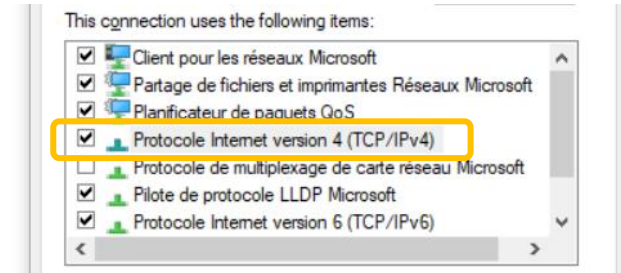
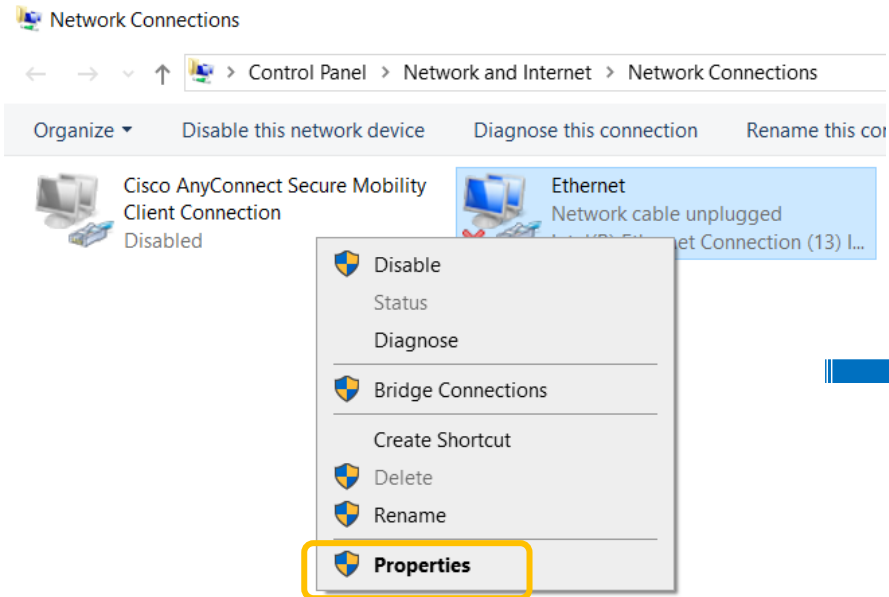
The communication protocol between the car and the computer is Ethernet. You must therefore configure the IP address and subnet mask of your computer to be able to communicate with the car. To configure it, please follow these instructions:

Search menu → Search for " **Network & sharing center** " → then " **change adapter settings** " connections" → Right-click on **Ethernet**



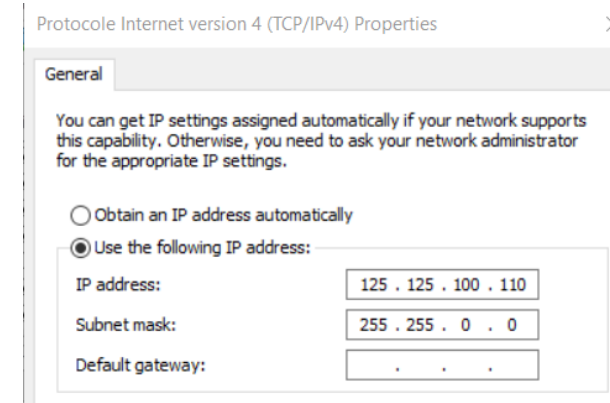
SETTING

Select " **Properties** " → select " **Protocol Internet version 4** "



Select « **Use the following IP adress** »

Enter the IP address and subnet mask opposite (xxx = 001 to 999).

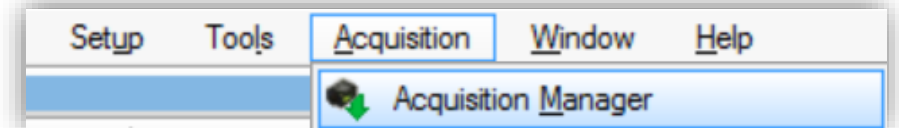


Note: the IP address is the same for all cars listed in the chart on the first page.

DOWNLOAD THE DATAS

DATAS DOWNLOADING :

1. Start Wintax4
2. Click on the “**Acquisition manager**” tab
→ The WTX4AcqMan window opens.
3. Click on « **Setup** » (Acquisition Setup)
4. Configure your data's downloading to find data more easily later
Example :



Track = enter the year, the week then the circuit/rally

Session = Enter the day (Day 1, 2, 3)

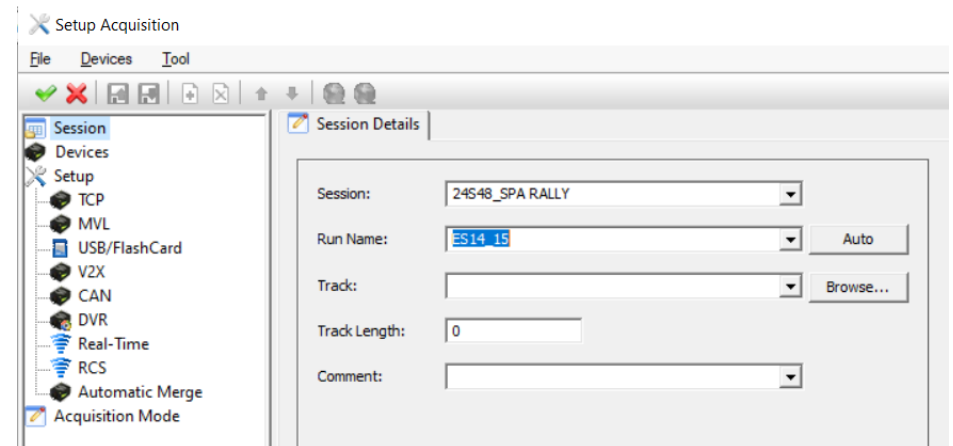
Run Name = type of driving / number of special stages

Track = Once you have created your circuit, you can load it

Track Length = enter the distance of the circuit (the unit is the meter) otherwise put 1

Comment = miscellaneous comments

5. Validate by clicking on:



DOWNLOAD THE DATAS

Once this step is done, you are ready to download the datas.

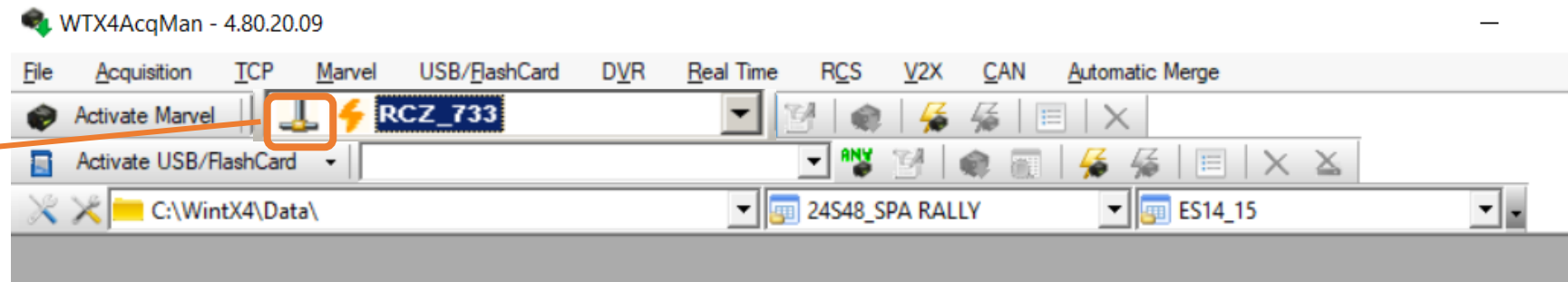
Note: 1: During the first download, a subfolder named "Data" will be automatically created in the folder "C:/ WinTAX4".

*Note 2: If you are equipped with the following utilities: Firewall, Antivirus, and VPN → **Disconnect them.***

BY AN ETHERNET CABLE

1. Link your ordinateur to the car by using the « **Ethernet** » cable then switch ON the « **MAIN Switch** »
2. Open « **Acquisition manager** » → The window « WTX4AcquMan » opens.
3. Open the drop-down menu → select your car.

The connexion appear with this symbol



4. Activate communication by clicking on:



- Once green, the computer is connected

BY A USB KEY

1st USE

1. Plug the USB Key to your computer
2. Open the « **Acquisition manager** » → The window WTX4AcquMan opens
3. Click on « **Acquisition** » then « **FlashCard Download Wizard** »

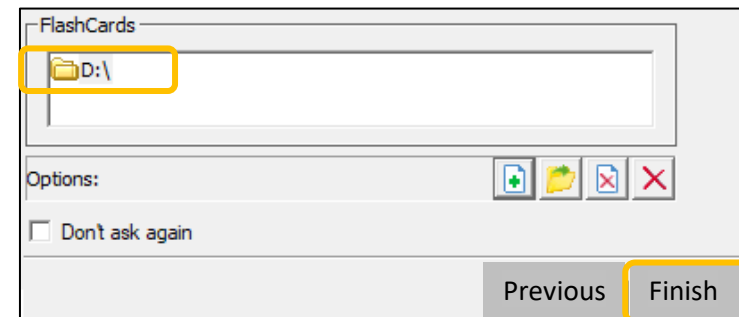
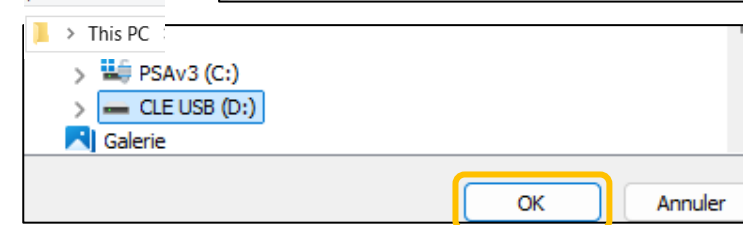
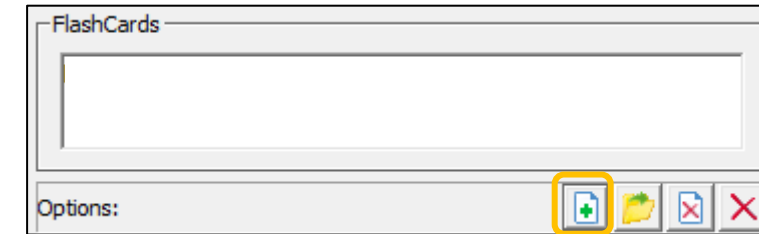
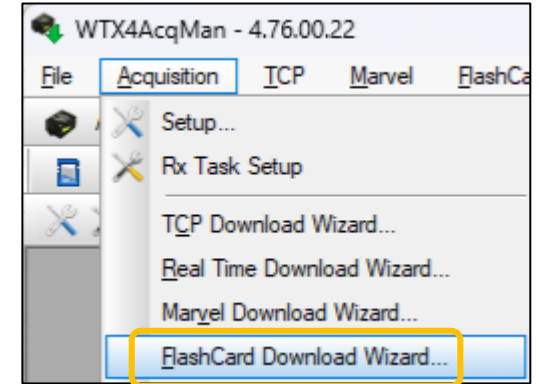
4. Go to the last page and add a USB key by clicking on the:



5. Select the USB key (here (D:)) and click OK.

6. Select the USB key registered and validate by clicking on « **Finish** »

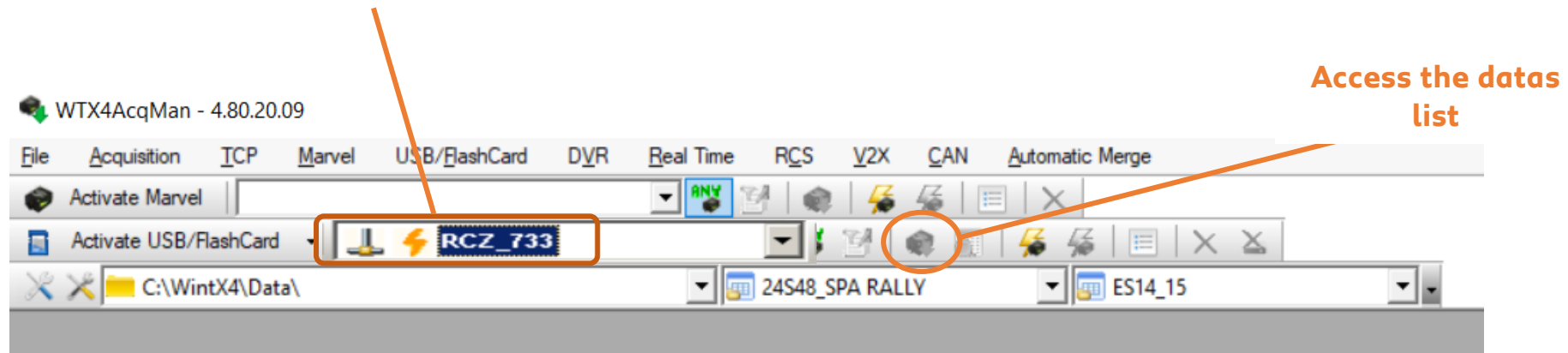
DOWNLOAD THE DATAS



DOWNLOAD THE DATAS

BY A USB KEY

1. Open « **Acquisition manager** » → The window WTX4AcquMan opens.
2. Open the drop-down menu → select your car



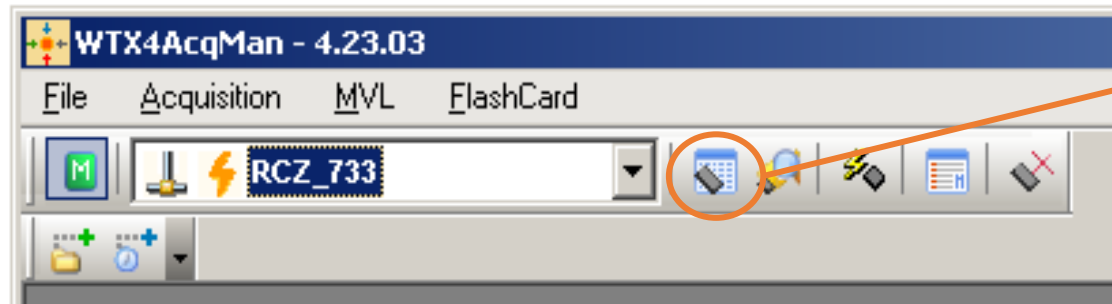
3. Activate the communication by clicking on :



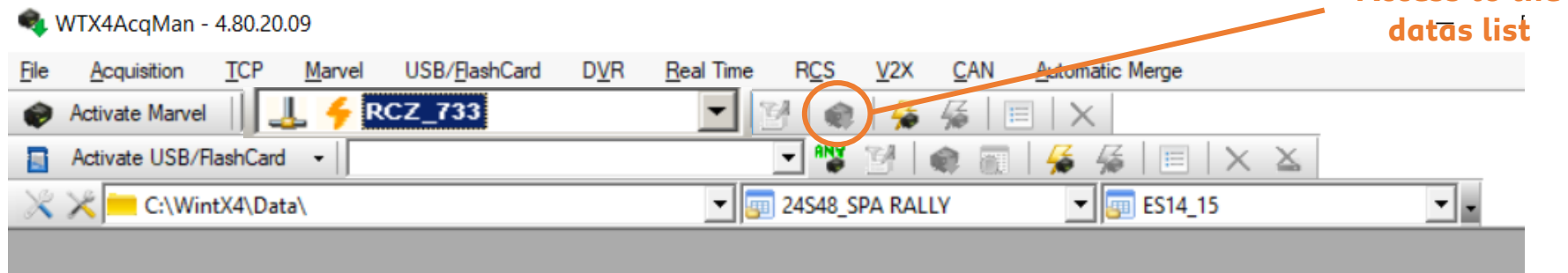
- Once green, the computer is connected

DOWNLOAD THE DATAS

Click on the icon on the right of the drop-down menu to select the datas to download :



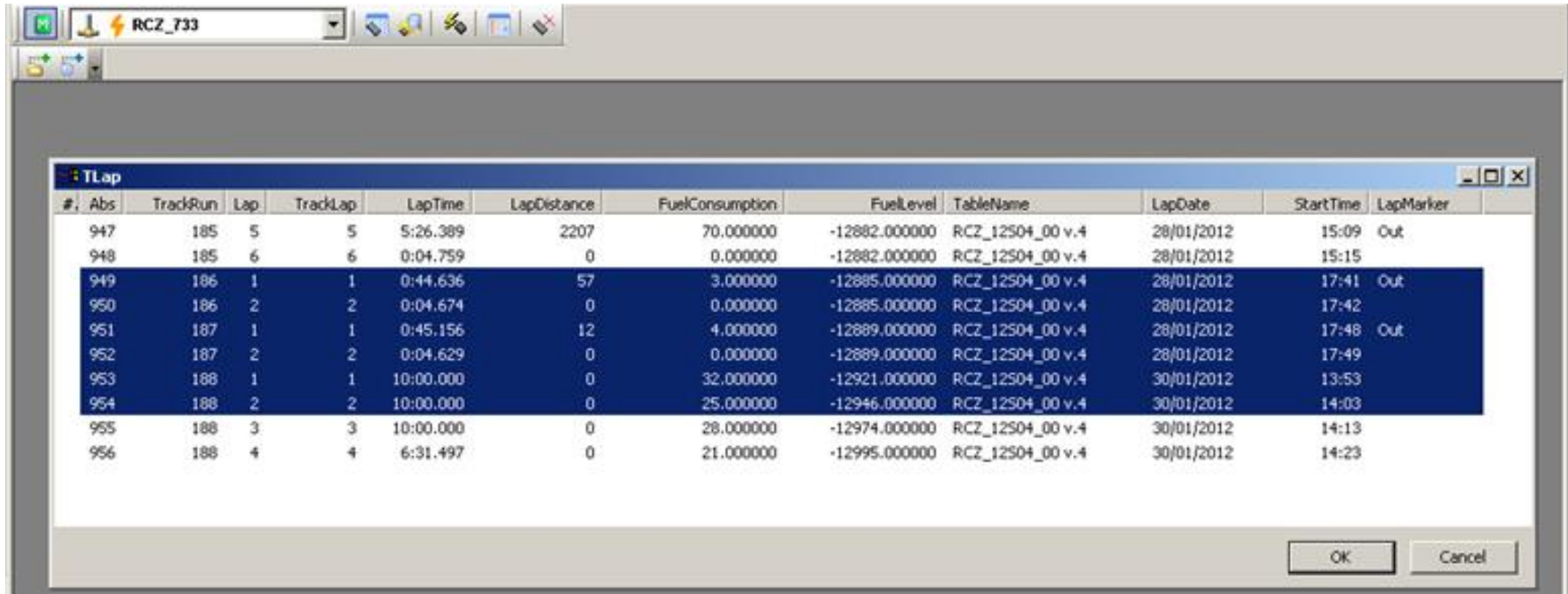
Or *



** Illustration depend of the licence model used*

DOWNLOAD THE DATAS

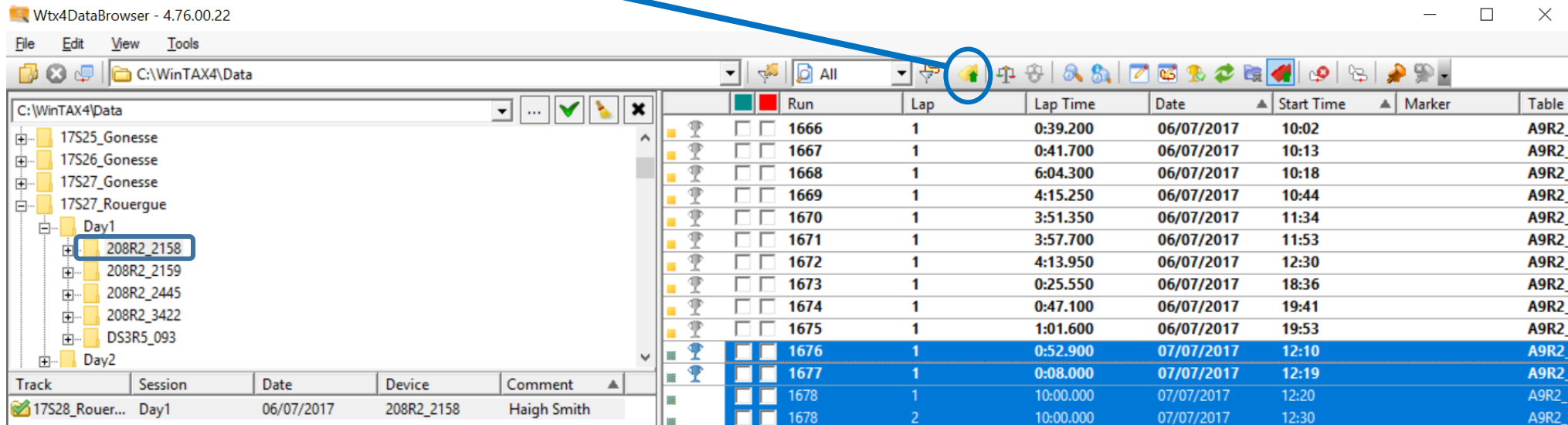
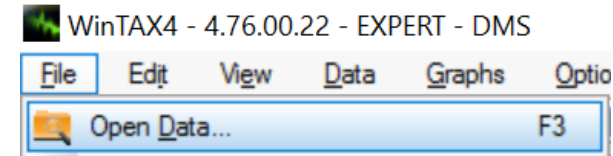
The window « **TLap** » is now open, **select the laps you want to download** and click “OK”.



OPEN & EXPLOIT DATAS

OPEN DATAS :

- In the main menu, click on folder then « **Open data** ».
- The window Wtx4DataBrowser opens, in the left side you can find the folders names corresponding to the information entered during the acquisition setup, then the name of the ECU. Here the example: « 208R2_2158 ».
- The datas corresponding to this download can be found on the right side of the window
- Select the desired datas then click to open



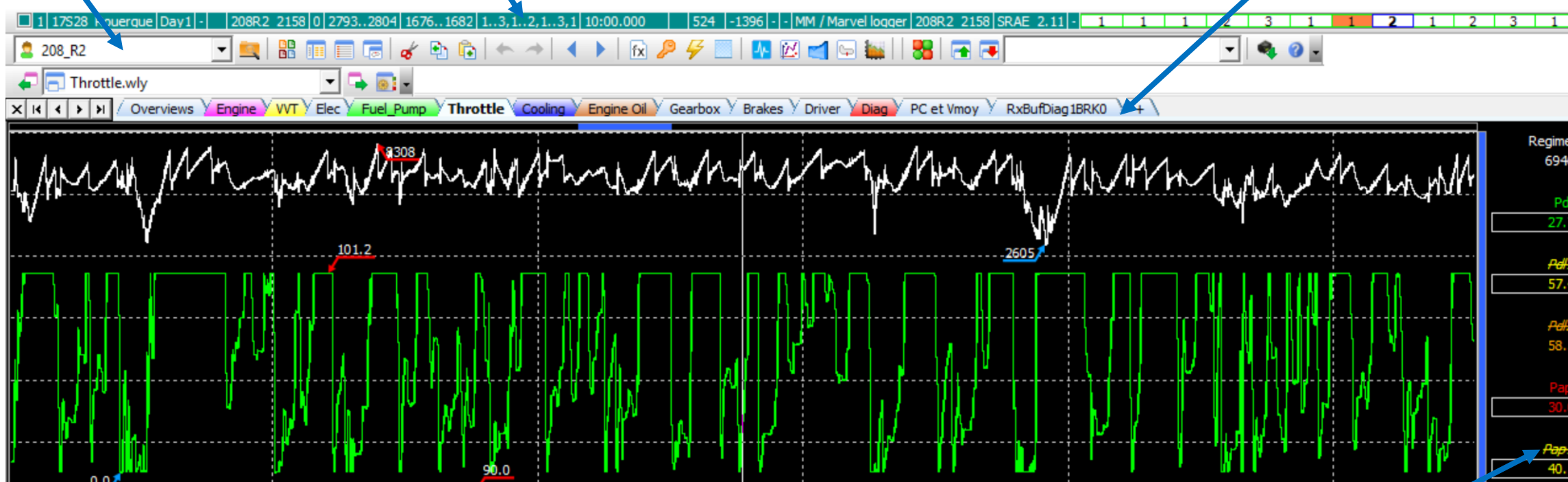
OPEN & EXPLOIT DATAS

EXPLOIT DATAS:

User selected

Opened datas

Display Tabs available



Name of channels