

DISC PART NUMBERS

CP2222-273

THIS IS A SOLID BRAKE DISC WITH INTEGRAL MOUNTING BELL OF MASS 3.3KG (116.5 Oz).

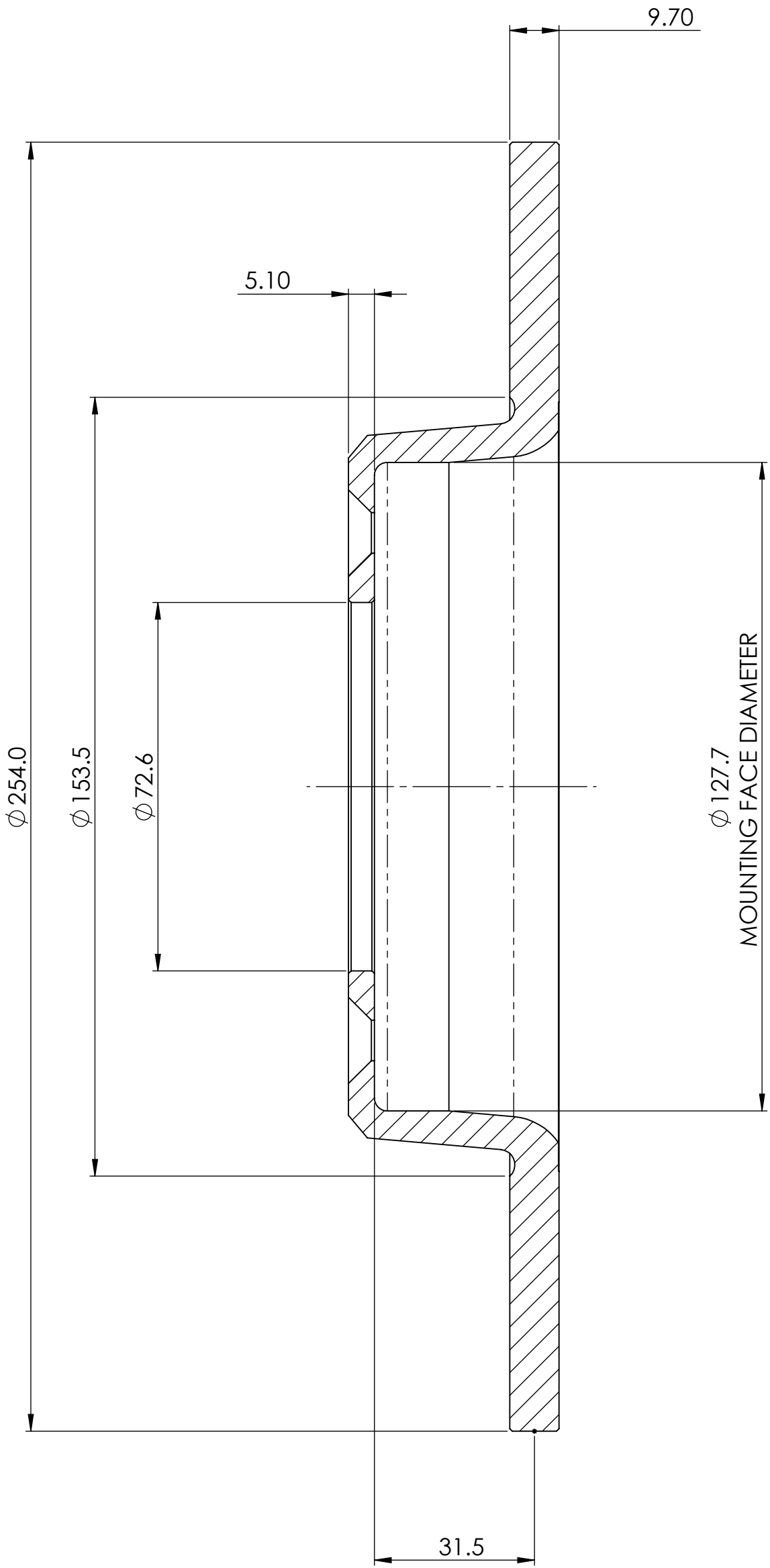
SUFFIX TO DISC PART NUMBERS:

SUFFIX DETAILS

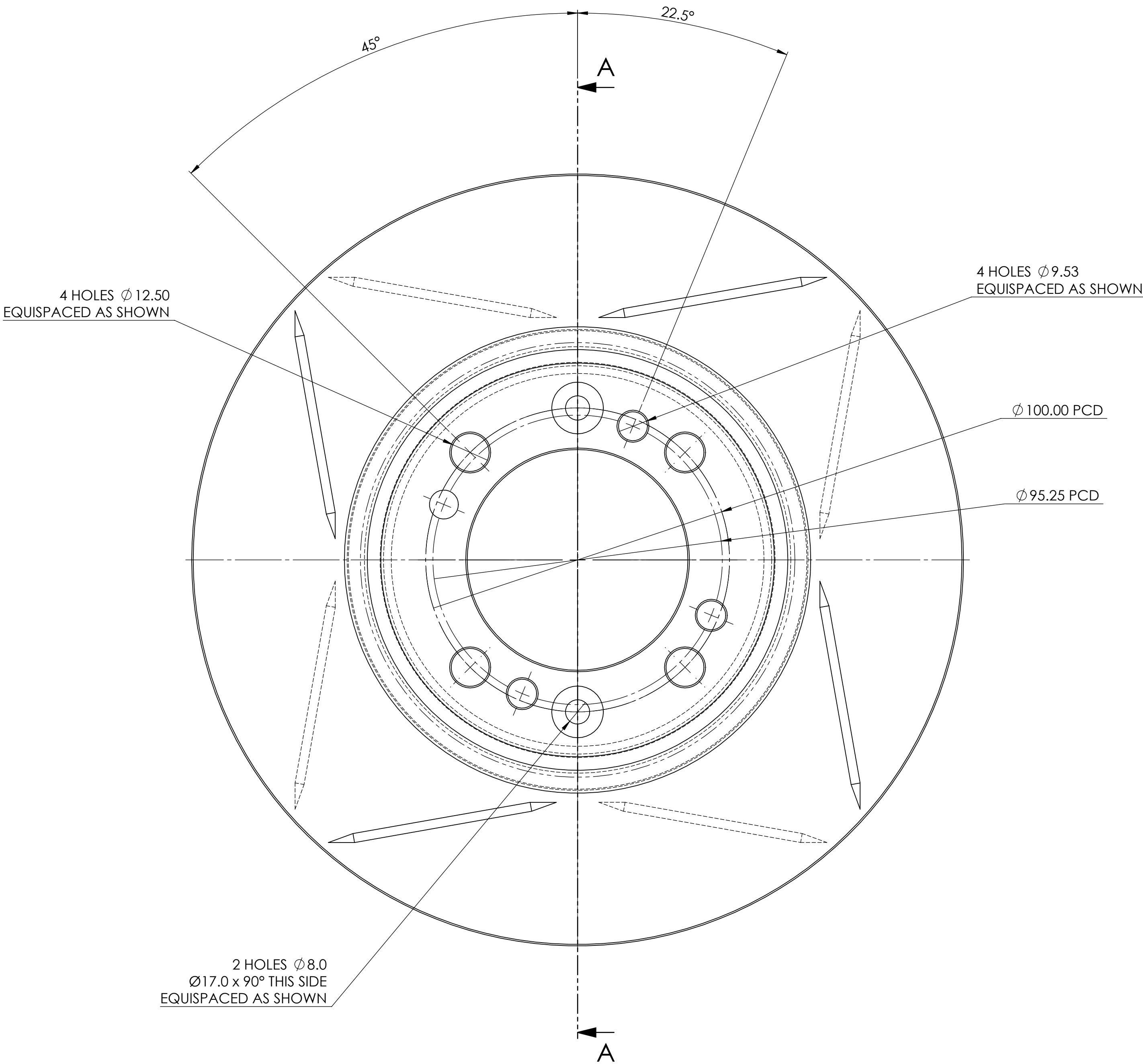
G4 4 STRAIGHT GROOVES PER FACE AS SHOWN.

THIS DISC WAS DESIGNED TO WORK WITH A D43 DEPTH PAD.

FOR DISC MOUNTING TECHNIQUES, BEDDING
PROCEDURE AND DISC COOLING RECOMMENDATIONS
SEE AP RACING BRAKE DISC CATALOGUE.



SECTION A-A



Issue No.	Alterations		Zone	Initials
	Date & No.	Particulars		
1	12/5/20 B8207	ISSUE 1 RELEASE		JAS

SCALE 1:1		SHEET 1 OF 1	
DRAWN	JOHN SCHOON		
APPROVED			
DERIVED FROM			
TITLE			
SOLID DISC			
DIA 254 x 9.7			
DRG NO.		CP2222-273CD	