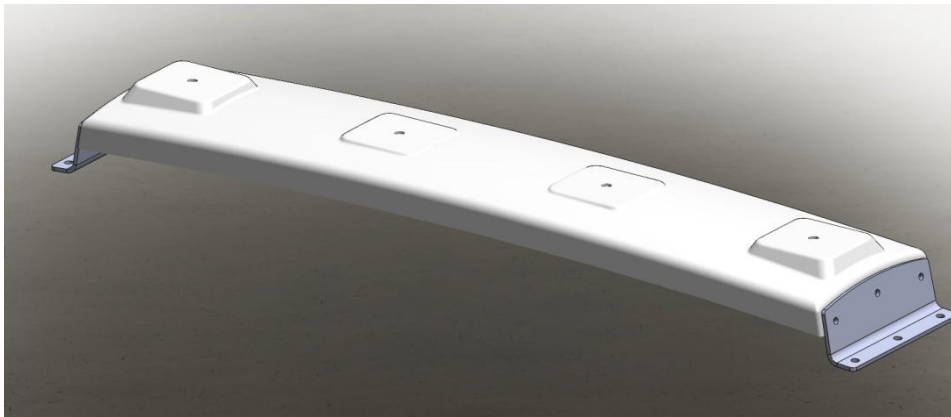


HARDMAN™

HARDTOPS & ACCESSORIES

Fitting instructions

HARD TOP MOUNT



Required tools












10/13



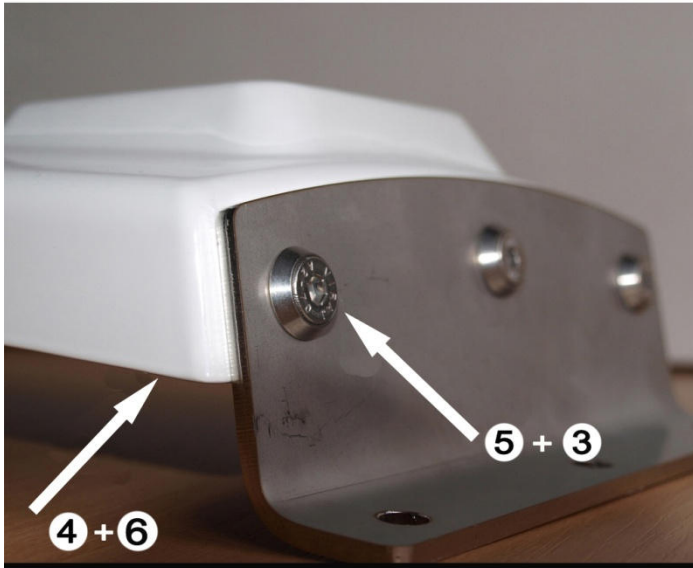
Ø 8,5



Parts list

		
1	Lamp holder	X1
		
2	Plastic cover	X1
		
7	Side bracket and rubber seal	X2
		
3	M6	X6
		
8	M8	X6
		
4	Ø 6,1	X6
		
9	Ø 8,4	X6
		
5	6,1	X6
		
10	M8	X6
		
6	Ø M6	X6
		
11	Bolt for plastic cover	X12

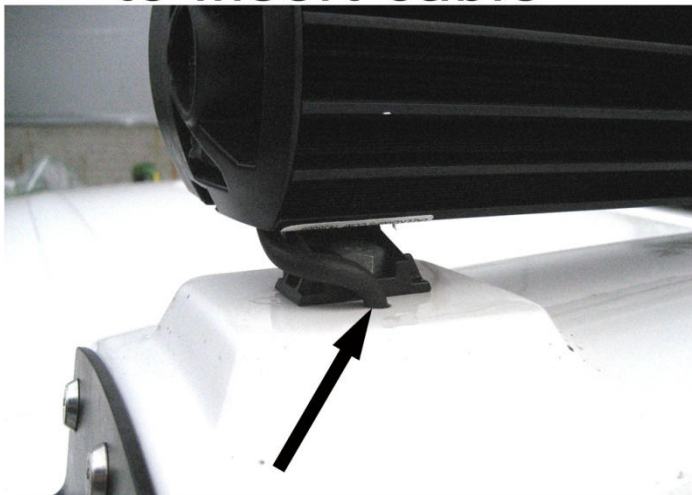
1. Fit the side brackets



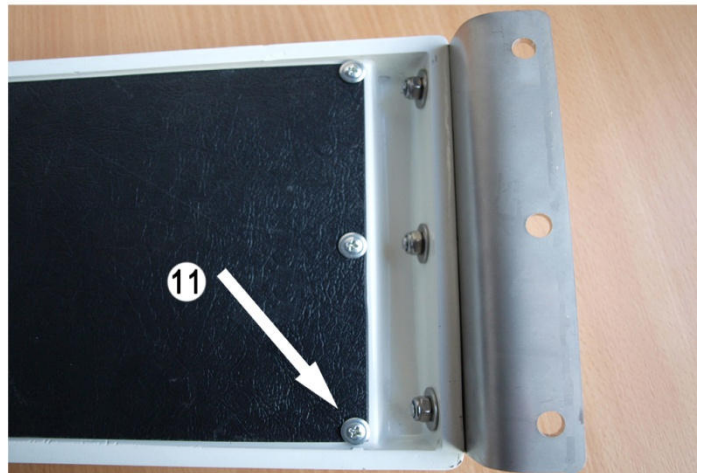
2. Fit the lamps



3. Drill additional hole to insert cable



4. Fit plastic cover



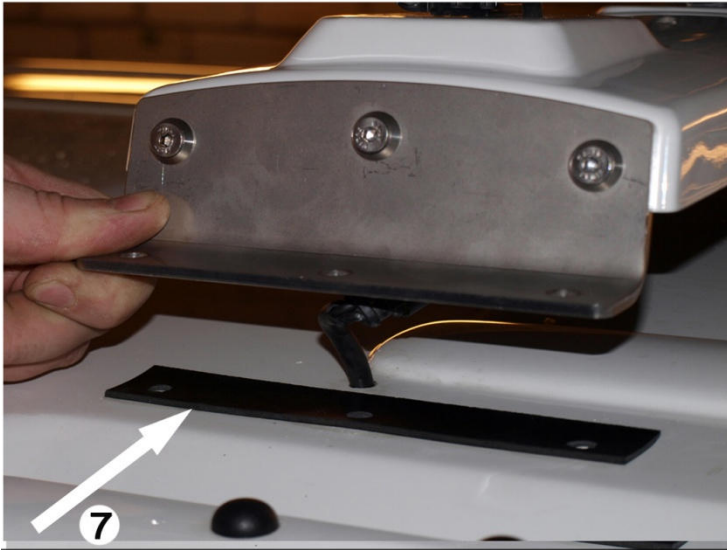
5. Mark holes for drilling



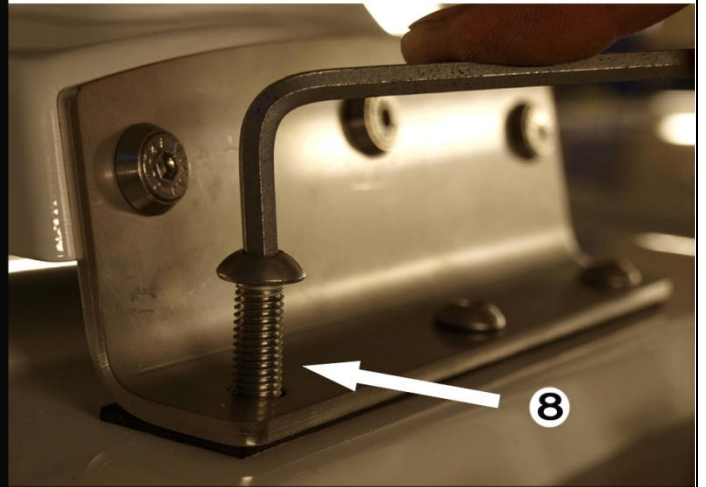
6. Drill Ø 8,5 hole



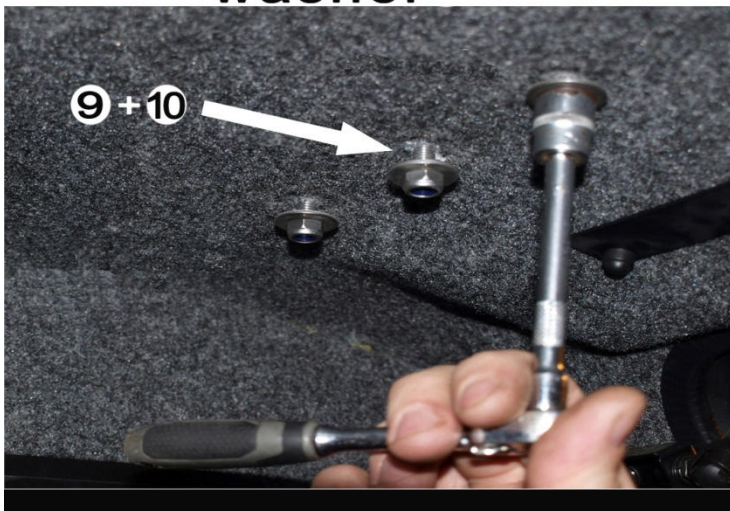
7. Apply the seal



8. Insert M8 bolts

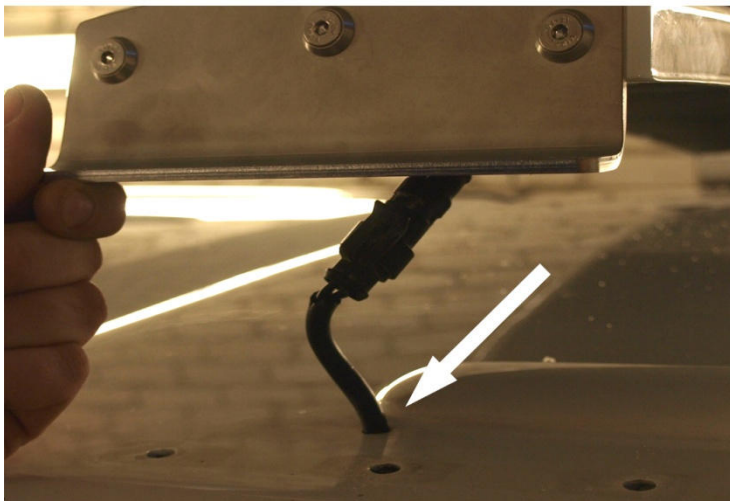


9. Apply M8 nut and washer



TWO OPTIONS FOR LAMP CABLE

1. Cable through hartop



2. Cable between cabin and hardtop

