



# ALIGNMENT KIT

Rally2 – R5 – Rally4 – R2 – R3 – TCR – Racing Cup



Stellantis Motorsport has developed an alignment kit to set up toe.

The kit can be used on any vehicle with 4x108 or 5x122 PCD (Pitch Center Diameter).

In particular, it can be used on the following vehicle :

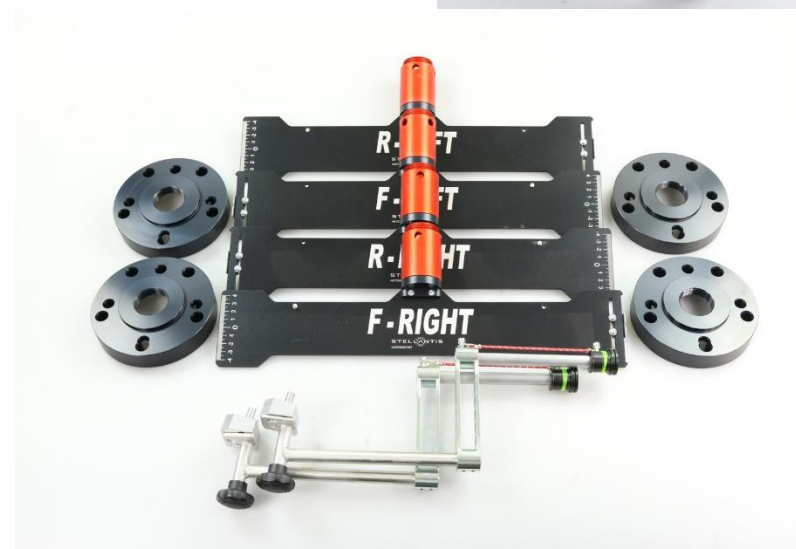
- Citroën : C3 Rally2 – DS3 R5/R3
- Peugeot : 208 T16 R5 –208 Rally4 –208 R2 – 308 TCR – 308 RC- 208 RC
- Opel : Corsa Rally4

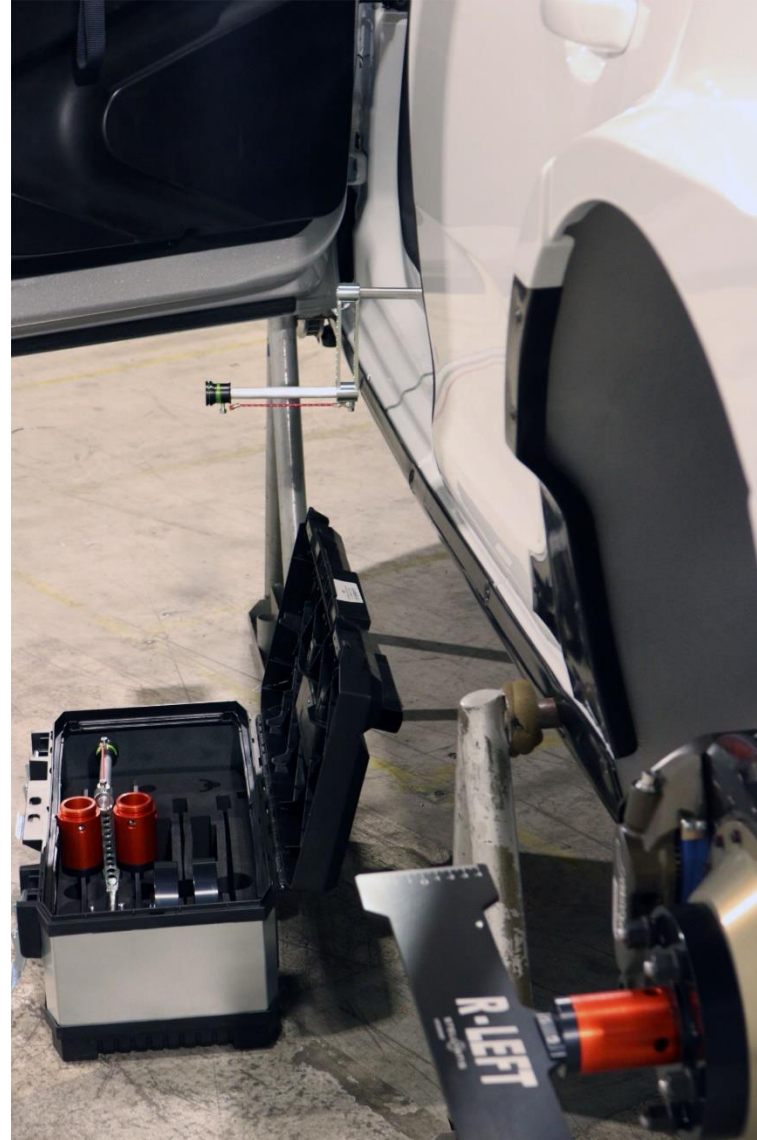
The kit is composed of :

- 4x universal flange, drilled to fit 4x108 and 5x122 PCD
- 4x rotating plate with ruler (-4° to 4°, 0.5 graduation)
- 2x center point with line
- 2x center point fixing plate
- 1x travel box

Reference : alignment-kit

**PRICE : 1300€ ex VAT**





STELLANTIS  
MOTORSPORT





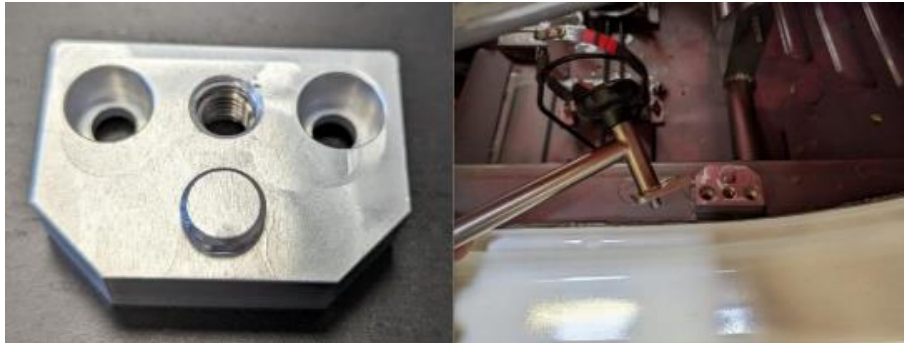
# HOW TO USE – SET UP AND PROCESS

## PREAMBULE :

- Set your car on scale and adjust precisely the main parameters :
  - Using your Stellantis Motorsport steering rack centering tool, center your steering wheel and steering wheel sensor to 0
  - Set up your car : Ride height, camber, toe, wheel base, overhang, weight distribution
- Put the car back on stands and remove all four wheels

## STELLANTIS ALIGNMENT KIT INSTALLATION :

1. Place the two fixing plates on each side sills of your car. When on place, drill two holes and use the two inserts supplied per plate to fix them.  
Try to be as equidistant as possible of front and rear wheel when placing the two fixing plates (*picture 1*)  
Keep enough place to place and tight the center flag without forcing on the door seals. (*picture 2*)



Picture 1



Picture 2



# HOW TO USE – SET UP AND PROCESS

2. Assemble each flange with its corresponding plate. Fix it to the dedicated spot on each wheel (*picture 3*).



*Picture 3*

3. After placing the yellow line into the guide of each plate and applying enough tension to avoid line to move, adjust the read value to your toe value on scale.

Example : if you set your toe to +1mm IN, untight the 2 bolts on the line guide and slide the guide to place the line on +1mm value. Then tight back the 2 guide bolts.

On picture 4, the front right plate is set to 0mm.



*Picture 4*

# HOW TO USE – SET UP AND PROCESS

3. If you can't set your toe value, you can adjust your center flag position using the two screws on top of the main axle and rotate center flag (picture 5).



Picture 5

4. Once all 4 plates are set, you can remove your alignment kit and put it back in the flight case.

**! Do not forget to remove your steering rack centering tool before putting back your car on wheels. !**

You are now able to check and adjust quickly and accurately your alignment on each wheel separately.



# HOW TO ORDER :

Alignment kit is available on Citroën Racing, Peugeot Sport websites :

Citroën Racing : <https://boutique.citroenracing.com/fr/entretien/9987-stellantis-motorsport-kit-d-alignement.html>

Peugeot Sport : <https://www.peugeotsport-store.com/fr/entretien/9987-stellantis-motorsport-kit-d-alignement.html>

Contact Stellantis Motorsport Racing Shop sales team :

E-mail : [racingshop@stellantis.com](mailto:racingshop@stellantis.com)

Tel. : +33 (0)9-68-40-99-95

