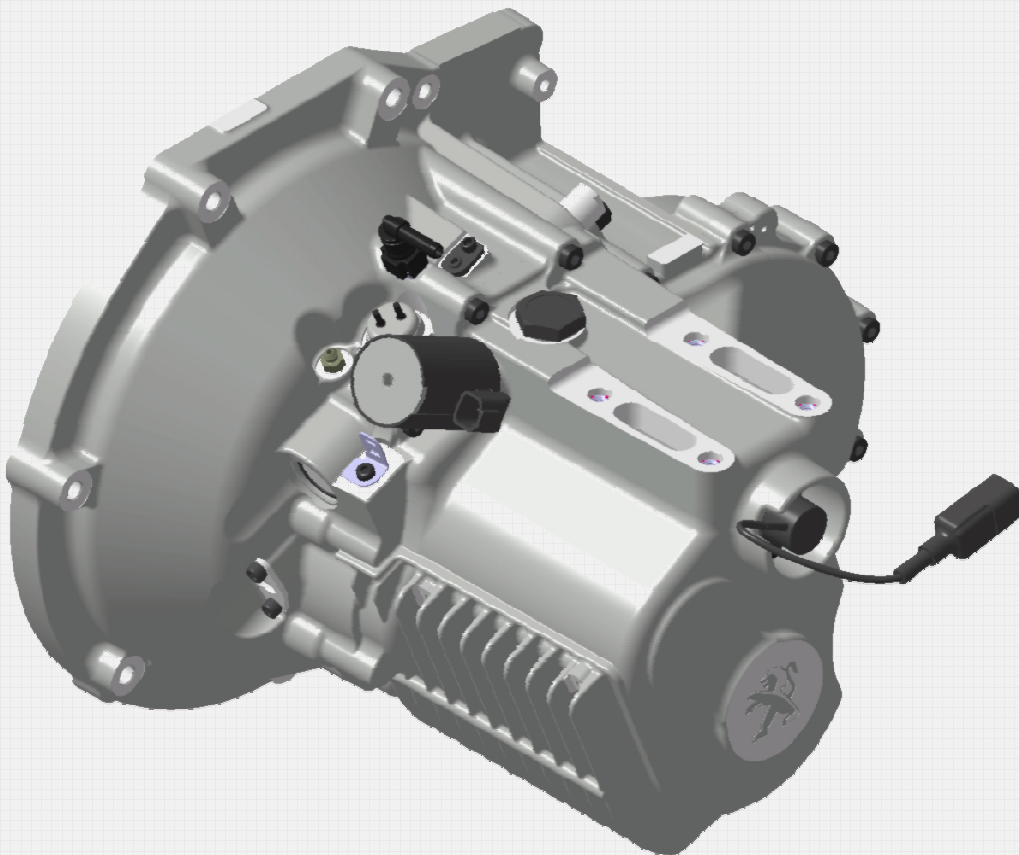




PEUGEOT 208 R2

Gearbox – STR2PSA30133 / STR2PSA30233

## TECHNICAL SPECIFICATIONS



For more details, please contact :

Plant adress:

SADEV  
6, rue des Grand'Montains  
85110 SAINT PROUANT  
France

Mail adress :

SADEV  
CS80001  
85 111 SAINT PROUANT Cedex  
France

Tél. : (00 33) 2 51 66 42 68 – Fax : (00 33) 2 51 66 49 60

E-Mail : [sadev@sadev-tm.com](mailto:sadev@sadev-tm.com)

---

|   |                 |
|---|-----------------|
| <b>1- Glossary</b> .....                                | <b>page 1-1</b> |
| <b>2- Main features</b> .....                           | <b>page 2-1</b> |
| 1 General details .....                                 | page 2-1        |
| 2 Ratio chart .....                                     | page 2-1        |
| 3 Differential set-up .....                             | page 2-2        |
| 4 Lubrication .....                                     | page 2-3        |
| 5 Gearing potentiometer .....                           | page 2-4        |
| 6 Gear shifting .....                                   | page 2-4        |
| 7 Spare parts .....                                     | page 2-4        |
| <b>3- Special tools</b> .....                           | <b>page 3-1</b> |
| 1 Special tools .....                                   | page 3-1        |
| <b>4- Servicing</b> .....                               | <b>page 4-1</b> |
| 1 Service planning .....                                | page 4-1        |
| 2 Rebuild kits details .....                            | page 4-1        |
| 3 Gearbox servicing .....                               | page 4-3        |
| <b>5- Exploded views</b> .....                          | <b>page 5-1</b> |
| <b>6- Contacts</b> .....                                | <b>page 6-1</b> |
| <b>7- Peugeot Sport customer parts rebuilding</b> ..... | <b>page 7-1</b> |
| <b>8- SADEV rebuilding card</b> .....                   | <b>page 8-1</b> |

## 1 - GENERAL DETAILS

The sequential gearbox **SADEV STR2** is composed of 5 front speeds plus a reverse one. Weight of the equipped gearbox is 36 kg.

It is equipped of self locking differential composed by friction discs and ramp press plates.

Command of the clutch is hydraulic and integrated to the gearbox.

Gearing potentiometer is furnished with the gearbox. Reverse gear locking is electric (there is no reverse gear locking cable).

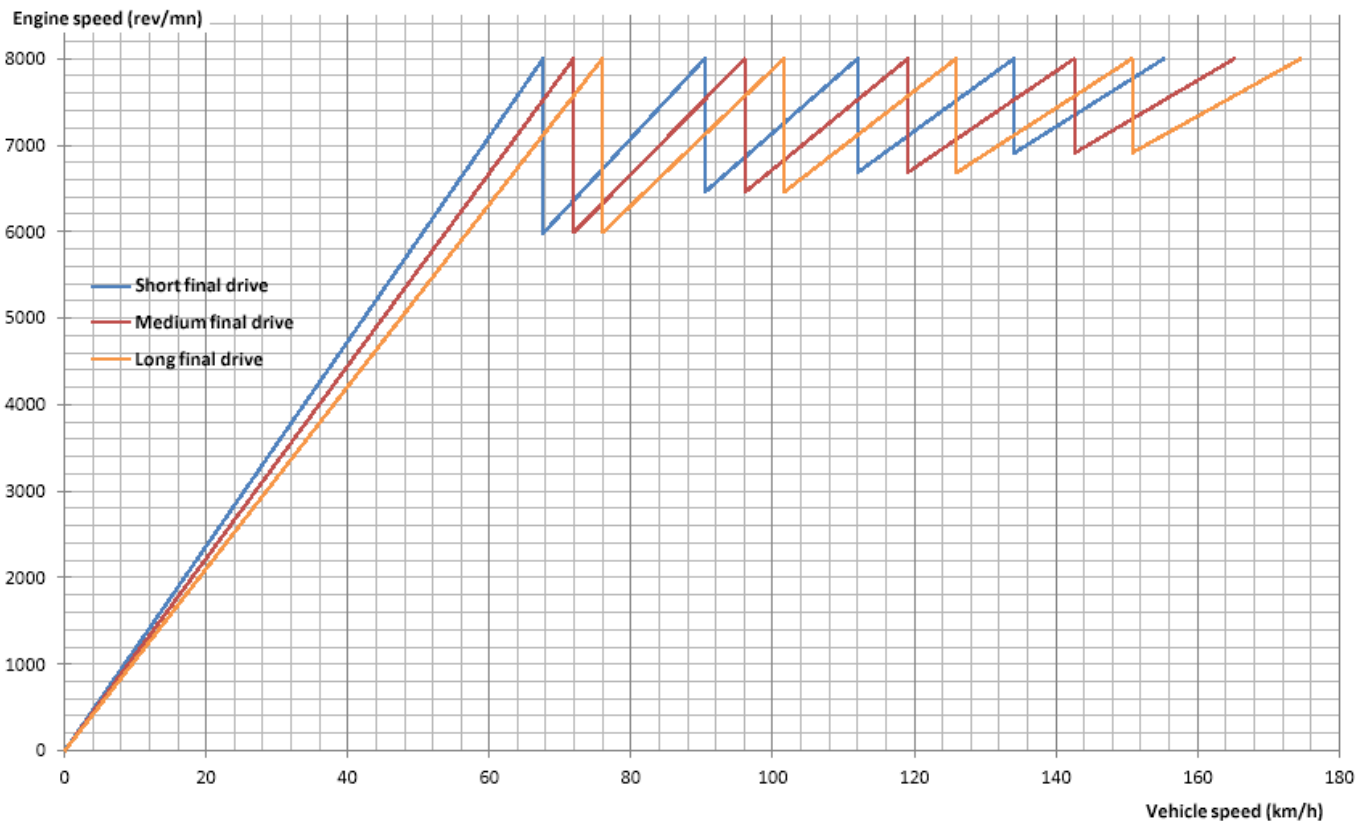
## 2 - RATIO CHART

Ratio chart is homologated by Peugeot Sport.

|                 | 1 <sup>st</sup> | 2 <sup>nd</sup> | 3 <sup>rd</sup> | 4 <sup>th</sup> | 5 <sup>th</sup> |
|-----------------|-----------------|-----------------|-----------------|-----------------|-----------------|
| Primary shaft   | 13              | 16              | 17              | 19              | 22              |
| Secondary shaft | 38              | 35              | 30              | 28              | 28              |

| Reverse gear    |    |
|-----------------|----|
| Primary shaft   | 13 |
| Idler           | 19 |
| Secondary shaft | 35 |

|                 | Final drive                       |                               |                              |
|-----------------|-----------------------------------|-------------------------------|------------------------------|
|                 | Medium final drive<br>(First fit) | Short final drive<br>(option) | Long final drive<br>(option) |
| Part number     | CPL13549050031                    | CPL12539050031                | CPL14559050011               |
| Secondary shaft | 13                                | 12                            | 14                           |
| Final drive     | 54                                | 53                            | 55                           |
| Bolts           | (x8) Bolts CHC M10x20 pas 125     |                               |                              |



### 3 - DIFFERENTIAL SET-UP

The differential is a self locking differential with 6 friction discs and ramp plates working asymmetrically at driving and at braking.

Preload is realized by helical springs.

| Ramp plates               |               |          |          |          |          |
|---------------------------|---------------|----------|----------|----------|----------|
| <b>Part number</b>        | F9050320      | F9050321 | F9050322 | F9050423 | F9050324 |
| <b>Version</b>            | 1 (First fit) | 2        | 3        | 4        | 5        |
| <b>Driving ramp angle</b> | 35°           | 30°      | 30°      | 45°      | 45°      |
| <b>Braking ramp angle</b> | 65°           | 65°      | 85°      | 65°      | 90°      |

The gearbox is delivered with a preload adjusted to 13.5 DaN.m for a working preload (after running in and hot) of 10 DaN.m.

**NB** .Running-in of the differential (50 kilometres) will decrease the preload to about 15%

**NB**. Preload measured under cold conditions (workshop) is about 15 % higher than the one measured under hot conditions.

**NB**. If the measure of the preload is less than 8 DaN.m, a check-up of the differential is required

## 4 - LUBRICATION

Quantity : 1,3 Litre

Recommended oil : TOTAL H50168B

| 1 <sup>st</sup> oil change | Oil change frequency | Quality Viscosity |
|----------------------------|----------------------|-------------------|
| After the first 50km       | After every races    | Type 75w90        |

To change oil gearbox :

Remove magnet oil drain plug (**B**) and clean it.



### SPECIAL PRECAUTIONS

No additives should be added to the oil. The resulted consequences are not in any circumstances covered by the SADEV supplier.

When topping up the gearbox oil, do not mix any other oil with that already into the gearbox.

All opened bottles must be closed after use to prevent the introduction of water or dirt.

### WASHING UNDER PRESSURE

When the gearbox is removed, seal all openings correctly to prevent the introduction of water into the gearbox.

## 5 - GEARING POTENTIOMETER

The potentiometer is adjusted in our company :  $1V \pm 0.01 V$  on neutral. This value can be checked on the dashboard

## 6 - GEAR SHIFTING

Shifting is manual.

**GRID: R-N-1-2-3-4-5**



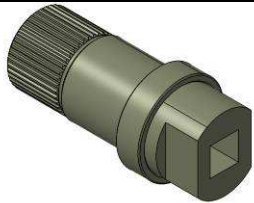
**TRAVEL OF SELECTRO AXLE : de la MAR à la 5ème : +/- 18mm**

## 7 - SPARE PARTS

Some parts can be purchased and assembled separately:

|   | <i>Part number</i> | <i>Description</i>                 |
|---|--------------------|------------------------------------|
|   | <i>F0089056</i>    | <i>Gearing potentiometer</i>       |
|  | <i>F90504361</i>   | <i>Reverse gear locking system</i> |
|  | <i>PSA225754</i>   | <i>Shifting sensor</i>             |
|  | <i>F90506141</i>   | <i>Slave cylinder</i>              |
|  | <i>F90506101</i>   | <i>Release bearing</i>             |

### 3 - SPECIAL TOOLS

|  | <i>Part number</i>   | <i>Description</i>                               |
|--|----------------------|--|
|   | <i>FOUT9050020</i>   | <i>Special tool for unlocking reverse system</i> |
|   | <i>FOUT0085017</i>   | <i>Clutch plate centring pin</i>                 |
|  | <i>(x2) F1404705</i> | <i>Preload tool</i>                              |

## 1- SERVICE PLANNING

This planning is based on SADEV experience and on results of development sessions of STR 208 R2. It can be modified depending races feedback and future development sessions.

| PART   | ACTION  | FREQUENCY                            |
|--|---|--------------------------------------|
| Primary shafts bearings                                    | Change  | 2000 km special stage                |
| Secondary shaft bearings                                   | Change  | 2000 km special stage                |
| Différentiel bearings                                      | Change  | 2000 km special stage                |
| Barrel bearings  | Change  | 2000 km special stage                |
| Reverse idle gear bearing                                  | Change  | 2000 km special stage                |
| Selector spring<br>(selector, dual pin pusher,<br>indexor) | Change  | 2000 km special stage                |
| Forks  | Check-up  | 1000 km special stage                |
|  | Change if necessary   | 2000 km special stage                |
| Planet gear and bevel gear                                 | Check-up  | 1000 km special stage                |
|  | Change if necessary   | 2000 km special stage                |
| Slave cylinder seals                                       | Change  | 1000 km of special stage or if leaks |
| Drain plug seal  | Change  | Every drain                          |
| Magnet plug seal   | Clean   | Every drain                          |
| Final drive  | Check-up  | 1000 km of special stage             |
|  | Change if necessary   | 2000 km of special stage             |
| Gears / Dog rings  | Check-up  | 1000 km of special stage             |
|  | Change if necessary   | 2000 km of special stage             |
| Differential   | Change differential spring if preload is lower<br>than 8 m.kg | Check-up of preload by customer      |
|  | Change pack of discs if wear > 0.05 mm                        | 2000 km of special stage             |

## 2- REBUILD KITS DETAILS

SADEV suggest 2 rebuild kits :

| KIT                  | DESCRIPTION   | FREQUENCY   |
|----------------------|---|---|
| <b>KITREVSTR2PS1</b> | <p align="center"><b>Light servicing</b></p> <ul style="list-style-type: none"> <li>+ check the primary and secondary shaft (gears and bearing)</li> <li>+ check the selector</li> <li>+ check the differential</li> <li>+ change of seals</li> </ul>   | Every 1000 km of SS                               |
| <b>KITREVSTR2PS2</b> | <p align="center"><b>Full servicing</b></p> <ul style="list-style-type: none"> <li>+ KITREVSTRPS1 (cf above)</li> <li>+ change the bearings (primary, secondary, differential, barrel)</li> <li>+change gears of final drive, dog ring (if damaged)</li> <li>+change bolts and screws</li> <li>+differential (pack core disc / friction disc / spring)</li> </ul> | End of season or 1000 km<br>after light servicing |



**PEUGEOT 208 R2  
STR2 Gearbox  
4- Servicing**



**Detail of the control kit : KITREVSTR2PS1**

| <b>Part number</b> | <b>DESCRIPTION</b>               | <b>Qty</b> | <b>Allocation</b>     |
|--------------------|----------------------------------|------------|-----------------------|
| 0206011            | Ø24x36x7 Double lip seal         | 1          | <i>Housing</i>        |
| 0206066            | Ø42x58x10 Double lip seal        | 2          | <i>Housing</i>        |
| 0201290            | Ø1.5x10 O'ring                   | 1          | <i>Housing</i>        |
| 5002018            | Drain plug seal                  | 1          | <i>Housing</i>        |
| 0205099            | Ø20x30x5 DI O'ring               | 1          | <i>Housing</i>        |
| 0599044            | 14.2x22x1 Copper washer          | 1          | <i>Housing</i>        |
| 0601020            | Ø18 Outer circlip                | 1          | <i>Housing</i>        |
| 9999941            | 200x3.6 mm Black clamp           | 1          | <i>Housing</i>        |
| 0299073            | Fuel filler cap                  | 1          | <i>Housing</i>        |
| 0601057            | AS30 Outer circlip               | 1          | <i>Primary line</i>   |
| 0601057            | AS30 Outer circlip               | 1          | <i>Secondary line</i> |
| 0602072            | Ø88 Inner circlip                | 1          | <i>Differential</i>   |
| 0301466            | M10x20 thick 125 Cl12.9 Chc Bolt | 8          | <i>Differential</i>   |
| 0602010            | Ø29 Inner circlip                | 1          | <i>Selector</i>       |
| 0201068            | Ø2.4x24.5 O'ring                 | 1          | <i>Selector</i>       |
| 0201017            | Ø2.5x10 O'ring                   | 1          | <i>Selector</i>       |
| 0211013            | EPDM Ø52x1.5 O'ring              | 1          | <i>Clutch bearing</i> |
| 0211012            | EPDM Ø2.62x55.25 O'ring          | 2          | <i>Clutch bearing</i> |
| 0299061            | EPDM 52x47.5x3 Outer seal        | 1          | <i>Clutch bearing</i> |
| 0299062            | EPDM 40x44.5x3 Inner seal        | 1          | <i>Clutch bearing</i> |
| 9907052            | SW32 Snap ring                   | 1          | <i>Clutch bearing</i> |

**Detail of the complete kit : KITREVSTR2PS2**

| <b>Part number</b> | <b>DESCRIPTION</b>       | <b>Qty</b> | <b>Allocation</b>     |
|--------------------|--------------------------|------------|-----------------------|
| KITREVSTR2PS1      | Overhaul kit             | 1          |                       |
| 0105061            | K20x24x17 Needle bearing | 1          | <i>Housing</i>        |
| 9907074            | BR58 Stop ring           | 1          | <i>Housing</i>        |
| 0101144            | 60/32 Bearing            | 1          | <i>Housing</i>        |
| 0101062            | 6205 Bearing             | 2          | <i>Primary line</i>   |
| 0103002            | NJ206 Bearing            | 1          | <i>Secondary line</i> |
| 0101062            | 6205 Bearing             | 1          | <i>Secondary line</i> |
| 0105015            | K35x40x17 Needle bearing | 5          | <i>Secondary line</i> |
| F9050307           | Circlips of differential | 1          | <i>Differential</i>   |
| 0101054            | AB-12458S03 Bearing      | 2          | <i>Differential</i>   |
| 0101004            | 6004 Bearing             | 2          | <i>Selector</i>       |
| 0801027            | Control spring           | 1          | <i>Selector</i>       |
| 0801046            | Indexing spring          | 1          | <i>Selector</i>       |
| 0801026            | Spring for dual pin rock | 1          | <i>Selector</i>       |

### 3- GEARBOX SERVICING

Notes :

- No intervention are allowed outside SADEV workshop. Gearboxes servicing will be done only in our workshop by our employees.
- Gearboxes are delivered leaded and numbered.
- The absence of lead 'SADEV' imposes a careful attitude in the event of minor or major problem to us, and applies to complete reserve of our share if necessary. Peugeot Sport will be advise in case of non-leaded gearbox.

Procedure of SADEV gearbox servicing :

1. Send the customer parts rebuilding document by email to Peugeot Sport ([peugeotsport-racingshop@peugeot.com](mailto:peugeotsport-racingshop@peugeot.com)) and SADEV ([sadev@sadev-tm.com](mailto:sadev@sadev-tm.com))
2. Forward the gearbox and its rebuilding card to SADEV workshop
3. Approve the estimate presented by Peugeot Sport (this document is send by SADEV to Peugeot Sport)
4. APPROXIMATELY 2 TO 3 WEEKS OF DELIVERY TIME MUST BE CONSIDERED, IN GENERAL

We must receive the complete product as described below:

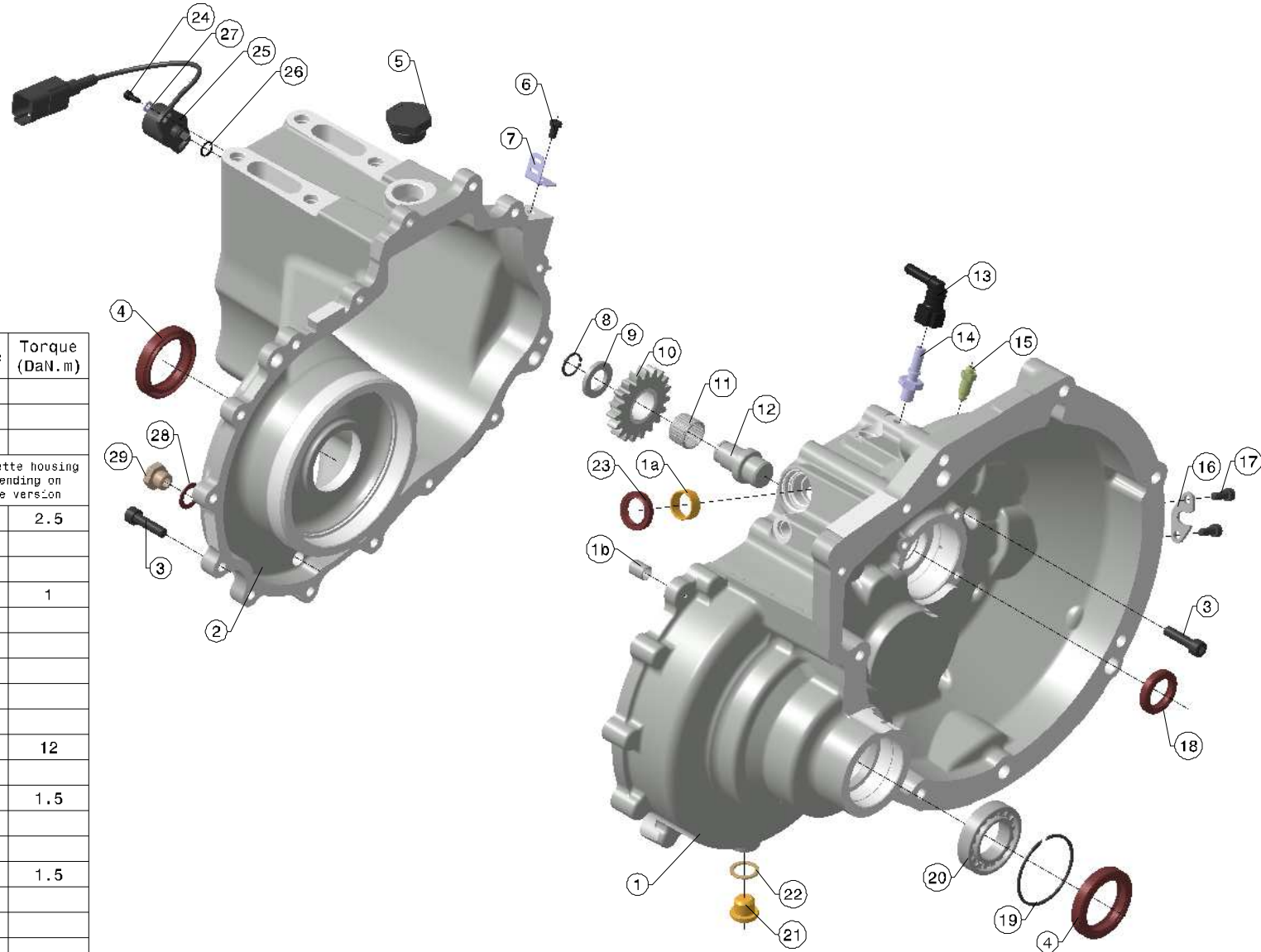
- Slave cylinder and release bearing in place
- Gearing potentiometer, shifting sensor and reverse gear locking system in place
- Gearbox drained and cleaned
- Drain plug and its seal in place
- A rebuilding card specifying the kilometres of the special stage and connection since the last service

The absence of element and the ask for spare parts or not must be specified on the rebuilding card. In case of lack of information or doubt, the gearbox will be send back reequipped with billing.

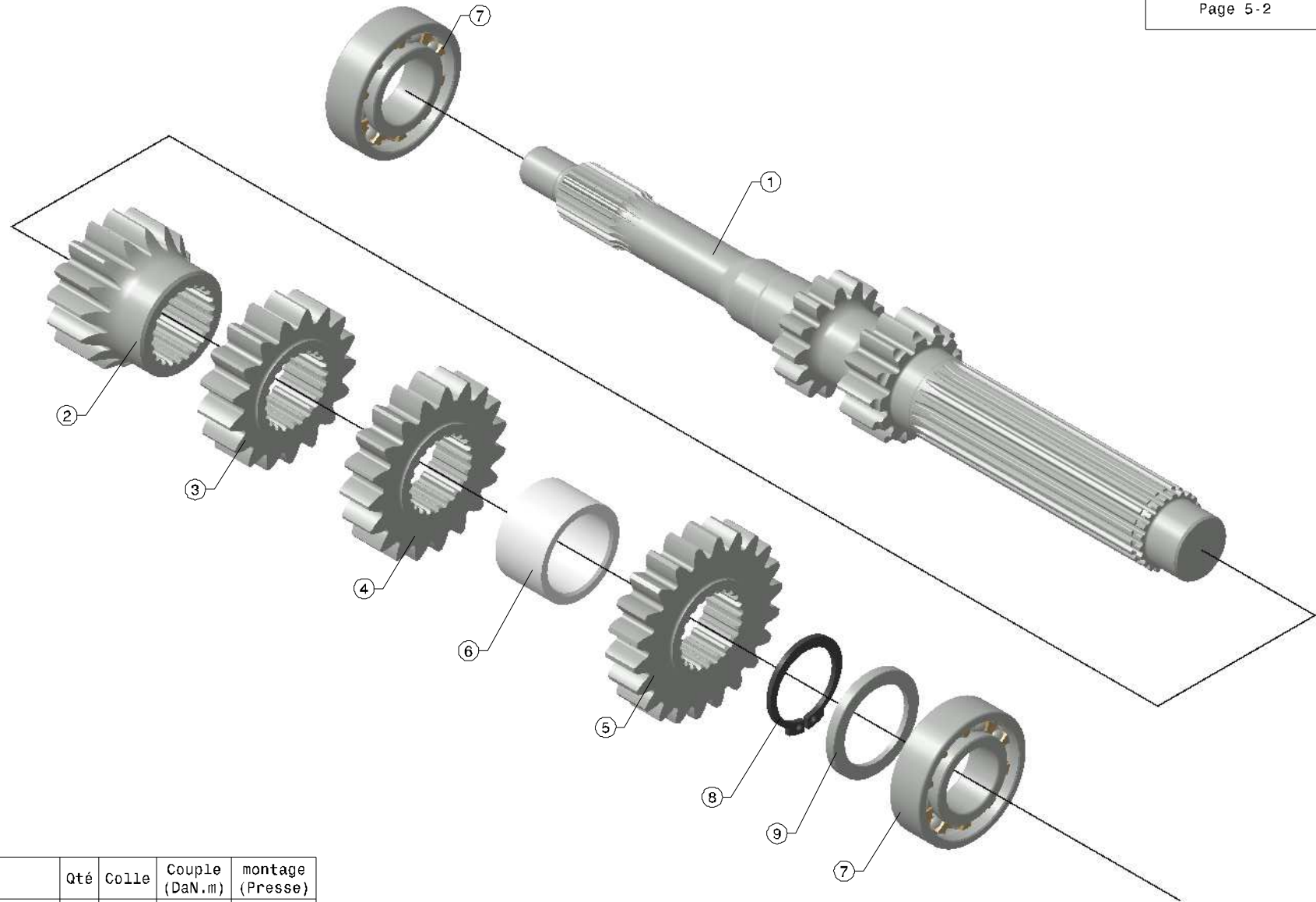
***As every mechanical part which is dedicated for racing, there is not warranty at all from our side.***

1- Housing

| N° | Part number | Description                    | Qty | Glue | Torque (DaN.m)                            |
|----|-------------|--------------------------------|-----|------|---|
| 1  | F14080011   | Clutch housing assembly        | 1   |      |   |
|    | 1202028     | a PAP2010P10 Bushing           | 1   | 648  |   |
|    | F0077229    | b Center pin Ø12x15            | 2   |      |   |
| 2  | F14080031   | Main housing assembly          | 1   |      | Cassette housing depending on the version |
| 2  | F14080041   | Main housing assembly evo 2014 | 1   |      |   |
| 3  | 0301532     | M8x25 Cl12.9 ZN Chc bolt       | 15  | 222  | 2.5                                       |
| 4  | 0206066     | DL 42x58x10 Viton lip seal     | 2   |      |   |
| 5  | 9999999     | Fuel filler cap                | 1   |      |   |
| 6  | 0308048     | M6x8 ZN Bhc bolt               | 1   |      | 1   |
| 7  | F9050003    | Support cable shifter          | 1   |      |   |
| 8  | 0601020     | Ø18 Outer circlip              | 1   |      |   |
| 9  | F9019509    | reverse bushing                | 1   |      |   |
| 10 | F9050004    | Reverse gear evo               | 1   |      |   |
| 11 | 0105061     | Bearing K20x24x17              | 1   |      |   |
| 12 | F9019516    | Reverse gear shaft             | 1   | 648  | 12  |
| 13 | 9999683     | Quick fitting adaptator        | 1   |      |   |
| 14 | F9022106    | Quick fitting                  | 1   | 577  | 1.5                                       |
| 15 | 5010002     | UNF 3/8 Bleed screw            | 1   |      |   |
| 16 | F9050001    | Clamp                          | 1   |      |   |
| 17 | 0301477     | M6x16 Cl12.9 ZN Chc bolt       | 2   | 222  | 1.5                                       |
| 18 | 0206011     | DL 24x36x7 O'ring              | 1   |      |   |
| 19 | 9907074     | SB58 Snap ring                 | 1   |      |   |
| 20 | 0101144     | 60/32 Bearing                  | 1   | 648  |   |
| 21 | F1402058    | Drain plug                     | 1   |      |   |
| 22 | 5002018     | Drain plug seal                | 1   |      |   |
| 23 | 0205099     | DL 20x30x5 O'ring              | 1   |      |   |
| 24 | 0301425     | M4x12 Cl10.9 ZN Chc bolt       | 2   |      |   |
| 25 | F0089056    | Potentiometer                  | 1   |      |   |
| 26 | 0201290     | Ø1.5x10 O'ring                 | 1   |      |   |
| 27 | 0502023     | M4 washer                      | 2   |      |   |
| 28 | 0599044     | Ø14.2x22x1 Copper washer       | 1   |      |   |
| 29 | F0001026    | Plug                           | 1   | 577  |   |

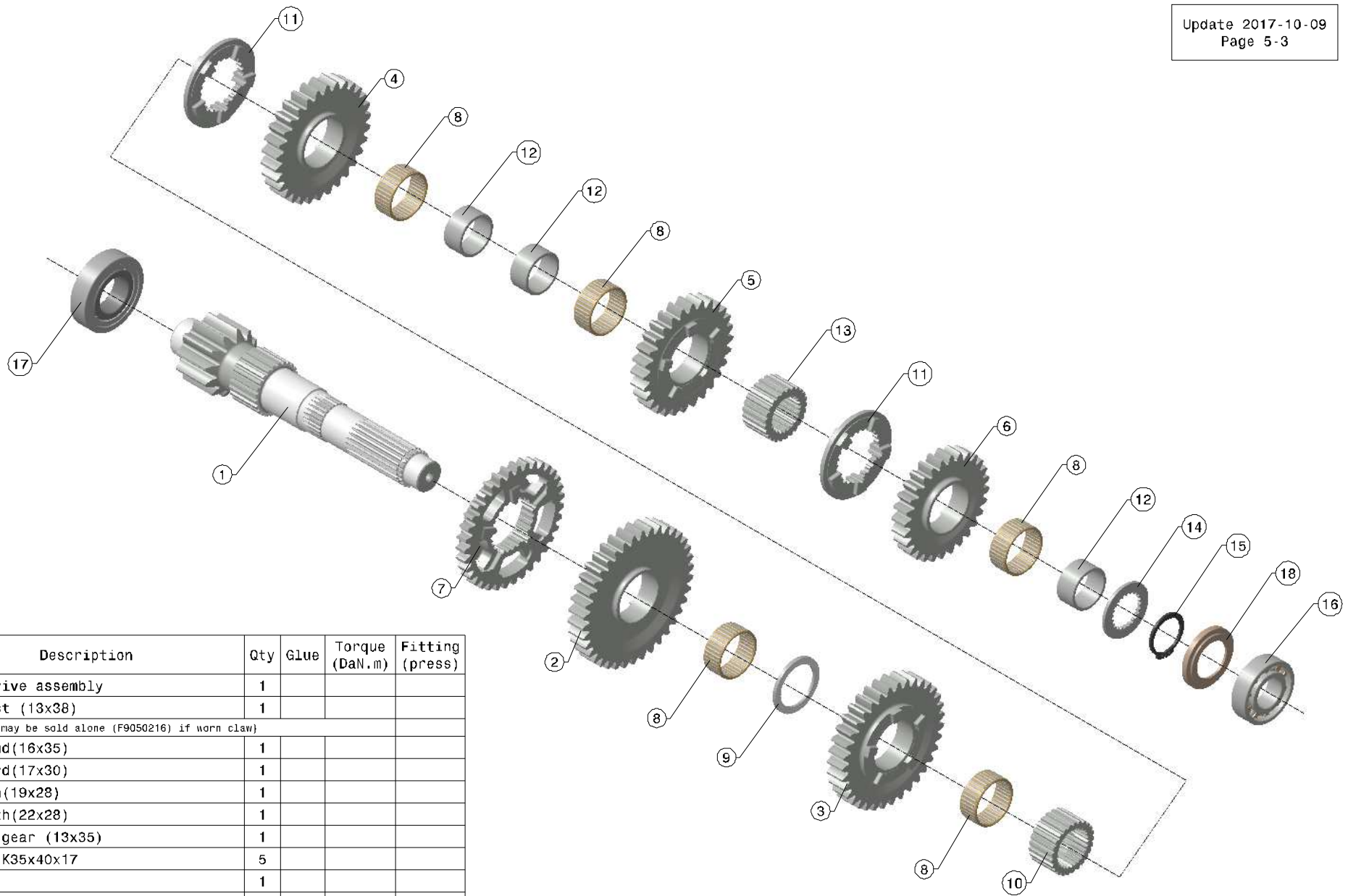


2 -Primary shaft



| N° | Référence      | Description                 | Qté | Colle | Couple (DaN.m) | montage (Presse) |
|----|----------------|-----------------------------|-----|-------|----------------|------------------|
| 1  | J759050M01605F | Ratio de 1st (13x38)        | 1   |       |                |                  |
| 2  | I7517M1635605F | Ratio 2nd (16x35)           | 1   |       |                | x                |
| 3  | C7517M1730605F | Ratio 3rd (17x30)           | 1   |       |                | x                |
| 4  | C7515M1928605F | Ratio 4th (19x28)           | 1   |       |                | x                |
| 5  | C7515M2228605F | Ratio 5th (22x28)           | 1   |       |                | x                |
| 6  | F9050101       | Shim de 1st                 | 1   |       |                |                  |
| 7  | 0101062        | Bearing 6205                | 2   | 648   |                |                  |
| 8  | 0601057        | Circlip AS30                | 1   |       |                |                  |
| 9  | F9050220       | Retaining washer "circlips" | 1   |       |                |                  |

3 -Secondary shaft

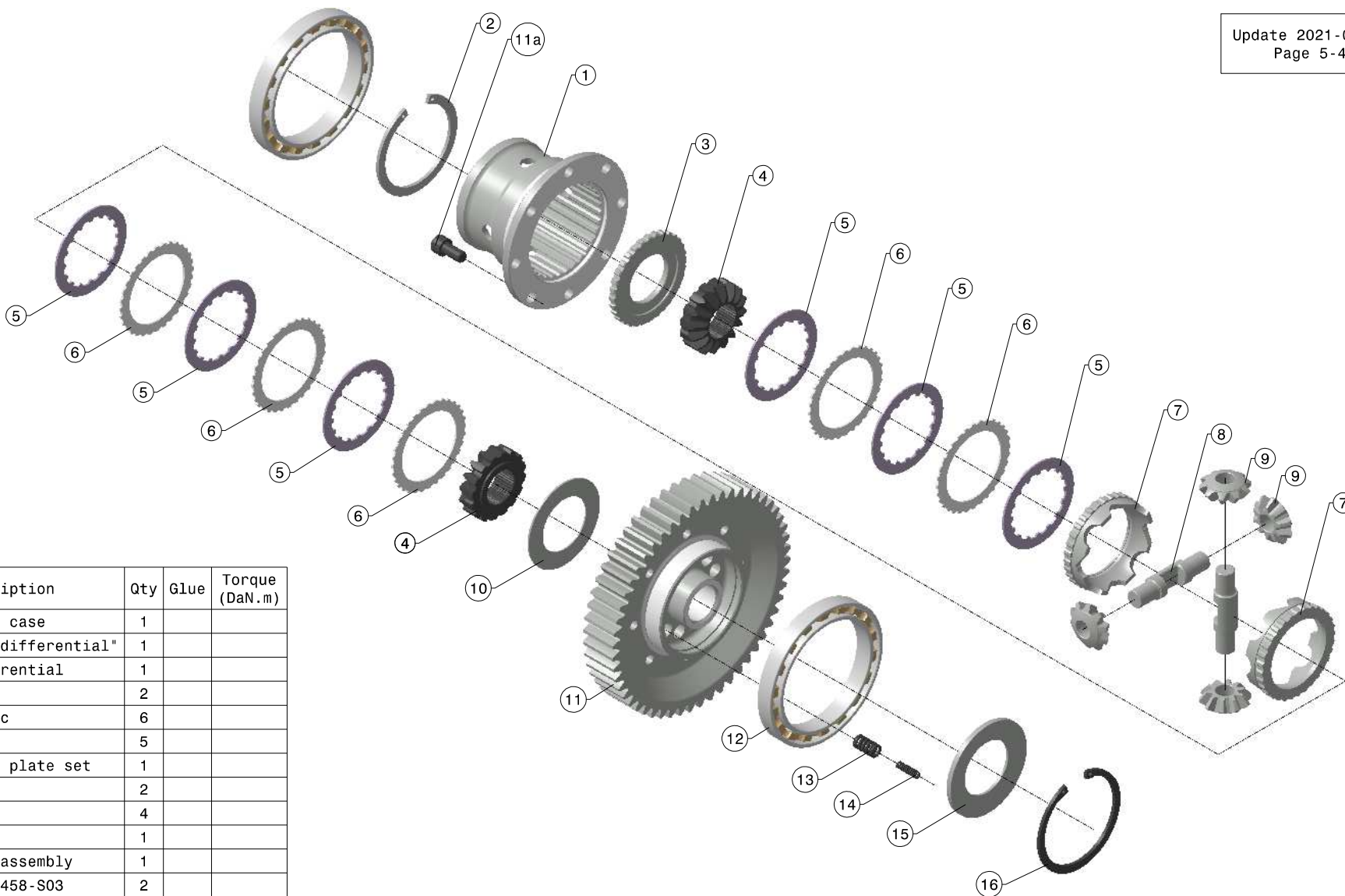


| N° | Part number    | Description   | Qty | Glue | Torque (DaN.m) | Fitting (press) |
|----|----------------|---|-----|------|----------------|-----------------|
| 1  | cf. list       | Final drive assembly  | 1   |      |                |                 |
| 2  | J759050M01605F | Ratio 1st (13x38)<br><small>(the wheel may be sold alone (F9050216) if worn claw)</small> | 1   |      |                |                 |
| 3  | I7517M1635605F | Ratio 2nd(16x35)  | 1   |      |                |                 |
| 4  | C7517M1730605F | Ratio 3rd(17x30)  | 1   |      |                |                 |
| 5  | C7515M1928605F | Ratio4th(19x28)   | 1   |      |                |                 |
| 6  | C7515M2228605F | Ratio 5th(22x28)  | 1   |      |                |                 |
| 7  | F9050215       | Reverse gear (13x35)  | 1   |      |                |                 |
| 8  | 0105015        | Bearing K35x40x17   | 5   |      |                |                 |
| 9  | F9050211       | Bushing   | 1   |      |                |                 |
| 10 | F9050209       | Dog ring hub 2-3  | 1   |      |                | x               |
| 11 | F9050201       | Dog ring  | 2   |      |                |                 |
| 12 | F9050206       | Plain ring gauge  | 3   |      |                | x               |
| 13 | F9050202       | Dog ring hub  | 1   |      |                | x               |
| 14 | F9050204       | Washer  | 1   |      |                | x               |
| 15 | 0601057        | Circlip AS30  | 1   |      |                |                 |
| 16 | 0101062        | Bearing 6205  | 1   | 648  |                |                 |
| 17 | 0103002        | Bearing NJ206   | 1   | 648  |                |                 |
| 18 | F9050221       | Retaining washer "secondary circlip"  | 1   |      |                |                 |

| N°           | Part number    | Description                           | Qtyé | Glue | Torque (DaN.m) |
|--------------|----------------|---------------------------------------|------|------|----------------|
| 1 (standard) | CPL13549050031 | Final drive assembly evo 2017 (13x54) | 1    |      |                |
| 1 (option)   | CPL12539050031 | Final drive assembly evo 2017(12x53)  | 1    |      |                |
| 1 (option)   | CPL14559050011 | Final drive assembly (14x55)          | 1    |      |                |



4 - Differential



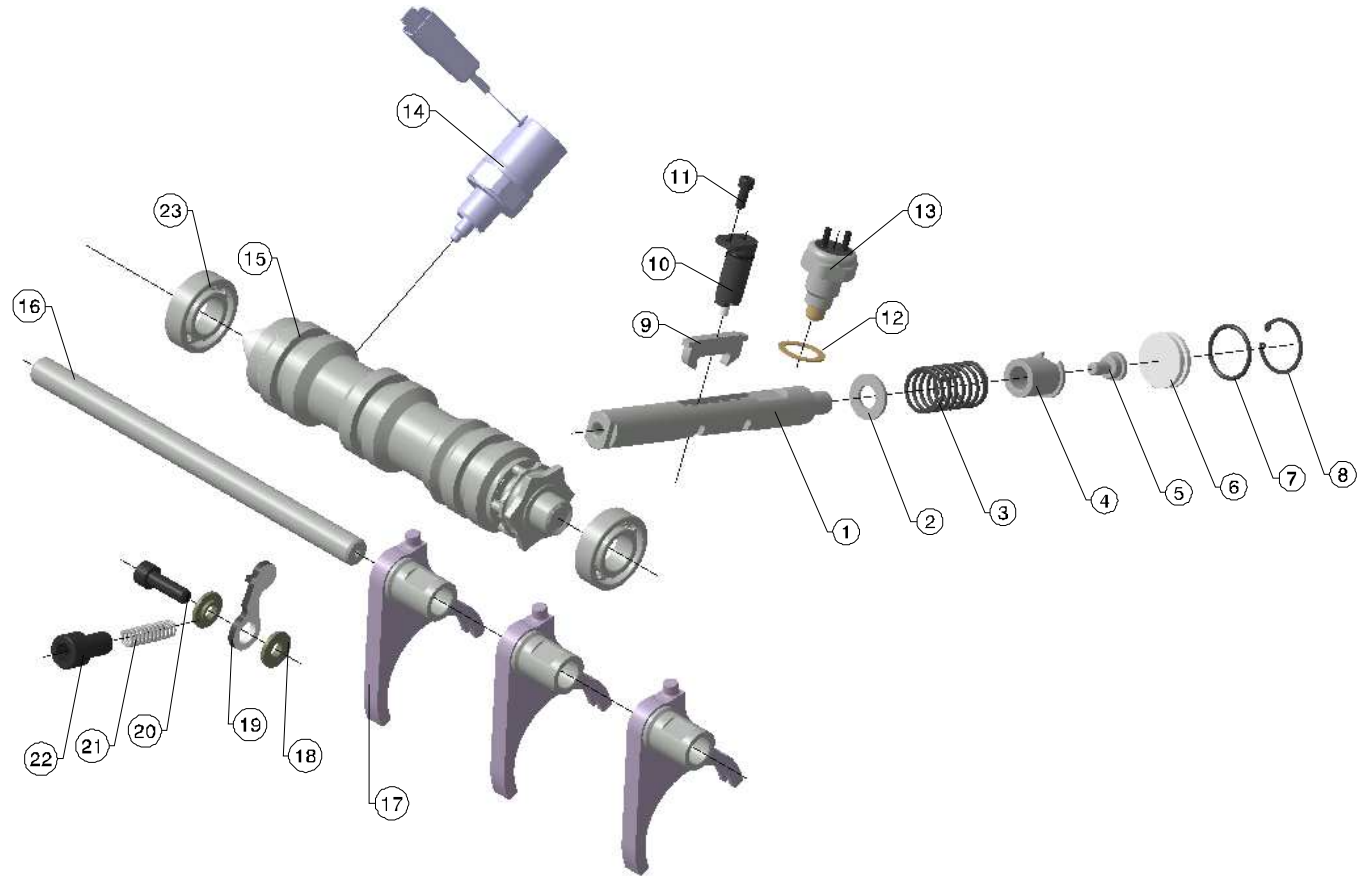
| N° | Part number | Description               | Qty | Glue | Torque (DaN.m) |
|----|-------------|---------------------------|-----|------|----------------|
| 1  | F9050300    | Differential case         | 1   |      |                |
| 2  | F9050307    | Stop ring " differential" | 1   |      |                |
| 3  | F9050306    | Cap of differential       | 1   |      |                |
| 4  | F9050309    | Sun gear                  | 2   |      |                |
| 5  | F1910308    | Friction disc             | 6   |      |                |
| 6  | F1910309    | Core disc                 | 5   |      |                |
| 7  | cf. liste   | Differential plate set    | 1   |      |                |
| 8  | F0085911    | Axle                      | 2   |      |                |
| 9  | F1401006    | Planet gear               | 4   |      |                |
| 10 | F9050304    | Shim                      | 1   |      |                |
| 11 | cf. liste   | Final drive assembly      | 1   |      |                |
| 12 | 0101054     | Bearing AB12458-S03       | 2   |      |                |
| 13 | 0801101     | Spring "big"              | 12  |      |                |
| 14 | 0801102     | Spring " small"           | 3   |      |                |
| 15 | F9050302    | Preload plate "spring"    | 1   |      |                |
| 16 | 0602072     | J88 Inner circlip         | 1   |      |                |

| N°           | Part number | Description                  | Qty | Glue | Torque (DaN.m) |
|--------------|-------------|------------------------------|-----|------|----------------|
| 7 (standard) | F9050320    | Differential plate set 35/65 | 1   |      |                |
| 7 (option)   | F9050321    | Differential plate set 30/65 | 1   |      |                |
| 7 (option)   | F9050322    | Differential plate set 30/85 | 1   |      |                |
| 7 (option)   | F9050323    | Differential plate set 45/65 | 1   |      |                |
| 7 (option)   | F9050324    | Differential plate set 45/90 | 1   |      |                |

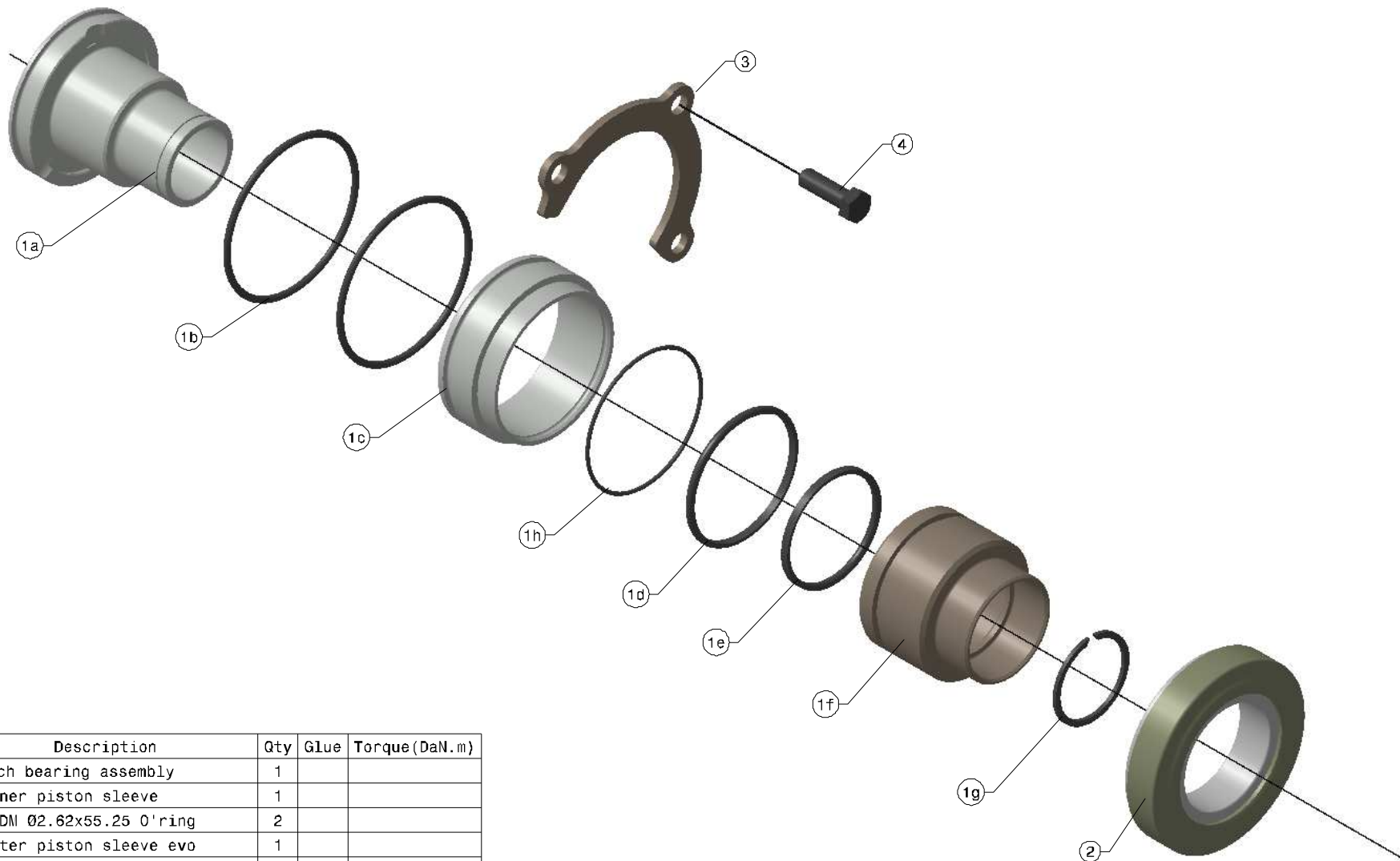
| N°            | Sales reference | Description                          | Qty | Glue | Torque (DaN.m) |
|---------------|-----------------|--------------------------------------|-----|------|----------------|
| 11 (standard) | CPL13549050031  | Final drive assembly evo 2017(13x54) | 1   |      |                |
|               | a 0301466       | M10x20 pas 125 C112.9 Chc bolt       | 8   | 648  | 9              |
| 11 (option)   | CPL12539050031  | Final drive assembly evo 2017(12x53) | 1   |      |                |
|               | a 0301466       | M10x20 pas 125 C112.9 Chc bolt       | 8   | 648  | 9              |
| 11 (option)   | CPL14559050011  | Final drive assembly(14x55)          | 1   |      |                |
|               | a 0301466       | M10x20 pas 125 C112.9 Chc bolt       | 8   | 648  | 9              |

5 - Selector

| N° | Part number | Description                   | Qty | Glue | Torque (DaN.m) |
|----|-------------|-------------------------------|-----|------|----------------|
| 1  | F9050400    | Selector axle                 | 1   |      |                |
| 2  | F0059049    | Thurst washer                 | 1   |      |                |
| 3  | 0801027     | Spring                        | 1   |      |                |
| 4  | F0059022    | Shoulder bushing              | 1   |      |                |
| 5  | F0059021    | Shoulder screw                | 1   | 248  | 2.2            |
| 6  | F9050401    | Plug                          | 1   |      |                |
| 7  | 0201068     | Ø2.4x24.5 O'ring              | 1   |      |                |
| 8  | 0602010     | Ø29 Inner circlip             | 1   |      |                |
| 9  | F0059040    | Dual pin rock                 | 1   |      |                |
| 10 | F90041281   | Complete dual pin rock pusher | 1   |      |                |
| 11 | 0301514     | M5x12 C112.9 ZN Chc bolt      | 1   | 222  |                |
| 12 | F9050417-1  | Set of shim poweshift         | 1   |      |                |
| 13 | PSA225754   | Light switch PSA              | 1   | 577  | 4              |
| 14 | F90504361   | Complete coll reverse gear    | 1   | 577  |                |
| 15 | F90504021   | Barrel assembly               | 1   |      |                |
| 16 | F9050416    | Fork axle                     | 1   |      |                |
| 17 | F9050413    | Fork assembly                 | 3   |      |                |
| 18 | F9050408    | Shoulder bushing "indexor"    | 2   |      |                |
| 19 | F9050407    | indexor rocker                | 1   |      |                |
| 20 | 0301169     | M8x25 C112.9 Chc bolt         | 1   | 243  | 2.5            |
| 21 | 0801046     | Spring                        | 1   |      |                |
| 22 | 0301451     | M12x20 C110.9 Chc bolt        | 1   | 577  | 4              |
| 23 | 0101004     | Bearing 6004                  | 2   |      |                |



6 - Clutch bearing



| N° | Part number | Description                    | Qty | Glue | Torque(DaN.m) |
|----|-------------|--------------------------------|-----|------|---------------|
| 1  | F90506148   | Clutch bearing assembly        | 1   |      |               |
|    | F9050614    | a Inner piston sleeve          | 1   |      |               |
|    | 0211012     | b EPDM Ø2.62x55.25 O'ring      | 2   |      |               |
|    | F9050616    | c Outer piston sleeve evo      | 1   |      |               |
|    | 0299061     | d EPDM Ø52x47.5x3 Inner O'ring | 1   |      |               |
|    | 0299062     | e EPDM Ø40x44.5x3 Inner O'ring | 1   |      |               |
|    | F9050617    | f Piston                       | 1   |      |               |
|    | 9907052     | g SW32 Snap ring               | 1   |      |               |
|    | 0211013     | h EPDM Ø1.5x52 O'ring          | 1   |      |               |
| 2  | F90506101   | Bearing                        | 1   |      |               |
| 3  | F9050603    | Retaining plate                | 1   |      |               |
| 4  | 0305109     | M7x20 C110.9 ZN Th bolt        | 3   | 222  | 2.2           |



SADEV contacts

**Sales manager SADEV**

Régis LEFEUVRE - [regis.lefeuvre@sadev-tm.com](mailto:regis.lefeuvre@sadev-tm.com)

**Sales SADEV**

Guillaume BRUNET - [Guillaume.brunet@sadev-tm.com](mailto:Guillaume.brunet@sadev-tm.com)

Peugeot Sport contacts

**Peugeot Sport technical assistants**

Christophe VELY- [christophe.vely@mpsa.com](mailto:christophe.vely@mpsa.com)

Send this doc by e-mail: [peugeot-sport-racingshop@peugeot.com](mailto:peugeot-sport-racingshop@peugeot.com)

Delivery address: **SADEV**  
6 rue des Grand'Montains  
85110 St Prouant  
FRANCE

|                  |  |
|------------------|--|
| Customer Code    |  |
| Delivery address |  |
| Rollcage number  |  |
| Vehicle Type     |  |

**Quotation before work:**       YES       NO

### **General data:**

|                                |  |
|--------------------------------|--|
| Date of request                |  |
| Dispatch date to Peugeot Sport |  |
| Deadline requested             |  |

### **Requests:**

|                           |  |
|---------------------------|--|
| Job requested             |  |
| Problem(s)                |  |
| Names and number of parts |  |

